



INSTALLATION GUIDE

ADVENTURE VAN PULL-OUT TRAY UN3005B



TOOLS REQUIRED (NOT INCLUDED)

- + POWER DRILL
- + MEASURING TAPE
- + MARKER
- + PHILLIPS SCREWDRIVER

INSTALL INFO

TIME TO INSTALL THIS PRODUCT: 1 HOUR

Additional help is suggested for a few of the install steps.
Compatible with all FVC Rear Door Platforms.

BEFORE YOU START

Please inspect the product and packaging upon delivery to ensure there are no issues and that all parts and hardware are accounted for.

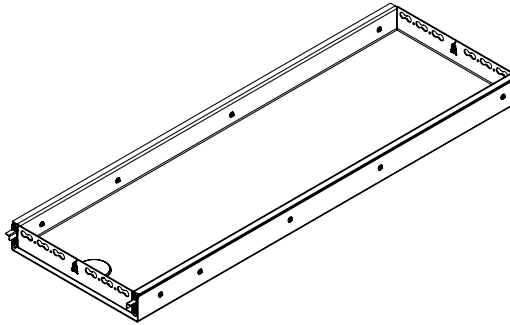
Contact us ASAP if anything is missing at:
support@flatlinevanco.com

BEFORE YOU START

All Flatline Van Co products must be properly assembled and secured before attaching to your vehicle. Improper attachment could result in an automobile accident, and could cause serious bodily injury or death to you or to others involved. You are responsible for assembling and securing Flatline Van Co products to your vehicle, checking the mounting points and attachments prior to use, and regularly inspecting the products for wear and or damage. We always recommend you use a professional to install any aftermarket accessories to your vehicle. If you have no mechanical experience and are not thoroughly familiar with the installation procedures, you must have the product installed by a professional installer or other qualified persons. The responsibility is yours and must be taken seriously for everyone's safety.



PACKAGE CONTENTS



PULL OUT TRAY

QTY: 1

INSTALL

STEP | 01 LAYOUT AND INSTALL PREP

1.1 Choose Mounting Location: Dry fit the **Pull Out Tray** inside your van and choose the location that best suits your needs.

NOTE - Check to ensure there is enough clearance to close the **Rear Doors** without contacting the **Drawer Release Levers** if mounting in the back of the van (the most common location).

1.2 Accessing Mounting Holes: Release the **Drawer** by pressing down on the **Release Levers** (FIG 1) to expose the **Mounting Holes** (FIG 2).

PRO-TIP: Prop the extended tray or have someone assist in holding it for this step.

1.3 Map Mounting Holes: Map out the installation location carefully to avoid drilling into wires, brake lines, or the fuel tank. Plan to use a minimum of six (6) fasteners, with the most secure method being fasteners in each corner and two in the center (shown red in FIG 2). Mark your locations with a marker and remove the tray for drilling.

TOOLS REQUIRED FOR THIS STEP: + MARKER
+ MEASURING TAPE

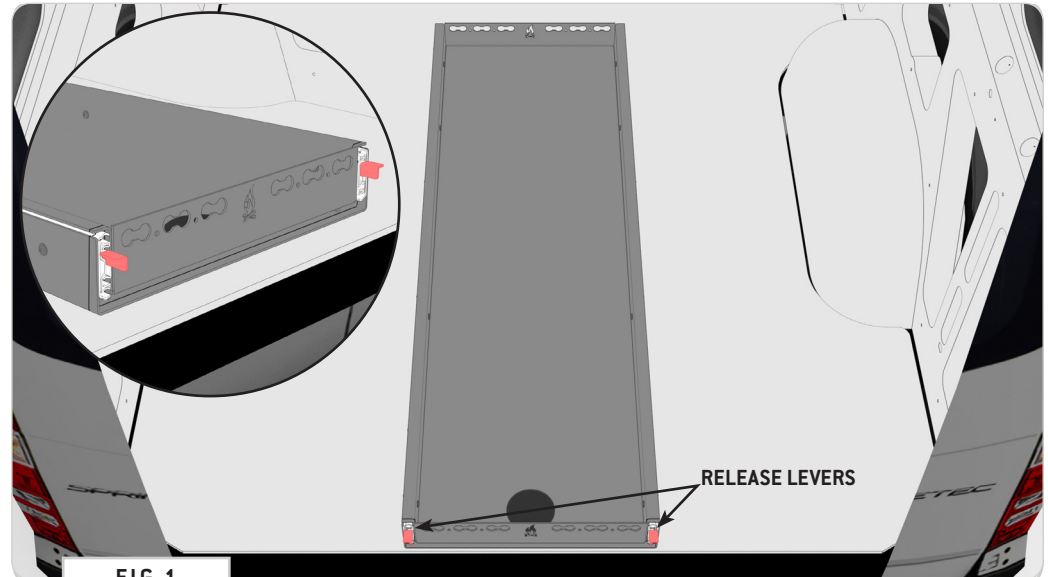


FIG 1

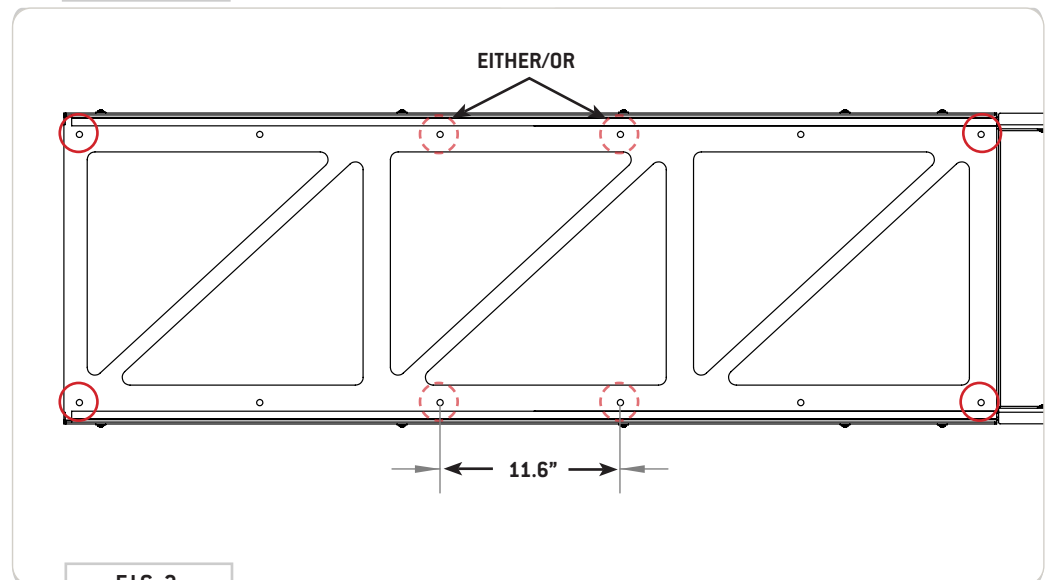


FIG 2

TOOLS REQUIRED FOR THIS STEP: + POWER DRILL

STEP | 02 INSTALL PULL OUT TRAY

2.1 Recommended Install for Maximum Load Capacity: Drill completely through your van floor (FIG 3) and through-bolt using a 3/8" Bolt, Washer, Large Fender Washer and Nylon Locknut (FIG 4).

NOTE - The hardware depicted is an example and can be substituted to fit the needs of your install. For instance, if your van has a subfloor $\frac{3}{4}$ " or thicker, you may use #14 screws with washers, though through-bolting is stronger.

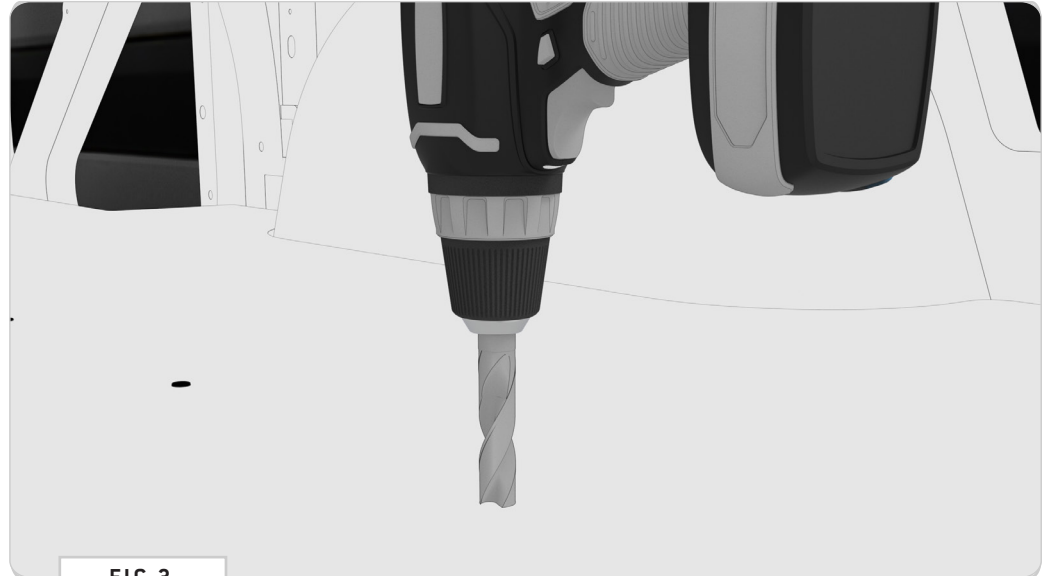


FIG 3

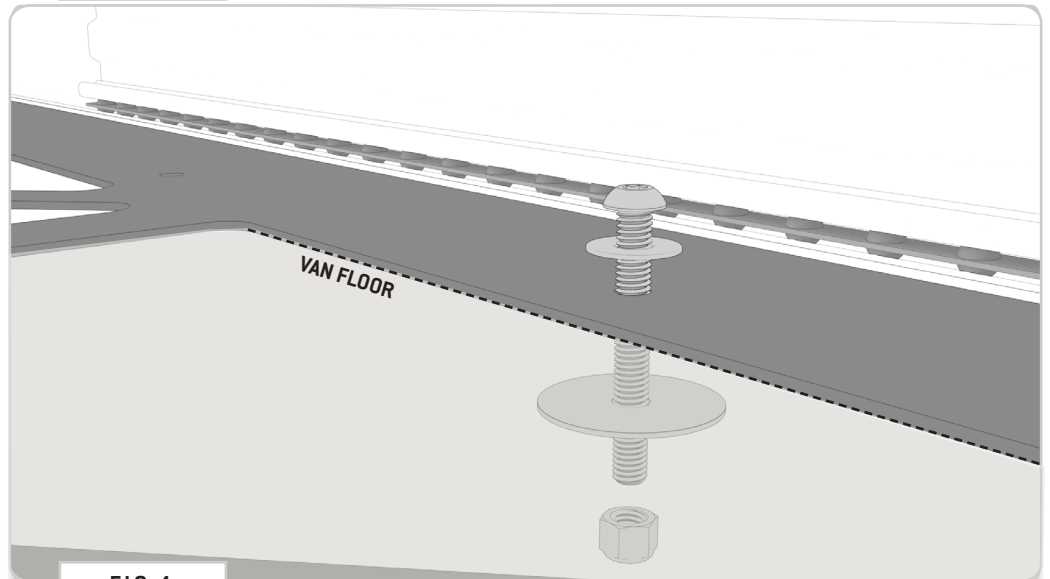


FIG 4

TOOLS REQUIRED FOR THIS STEP: + PHILLIPS SCREWDRIVER

STEP | 03 SERVICE AND MAINTENANCE

3.1 Tightening Slide Mount Screws: If the slide mount screws on your **Pull Out Tray** come loose; slide the tray **out** to expose the screws from the **inside**. You may need to move the inner slide mechanism around to get the **Access Window (FIG 5)** to line up with each screw.

NOTE - All mount screws are accessible from the inside by moving the inner slide mechanism back and forth. Our customer service team can provide a video demonstrating this, please reach out if you need it.

3.2 Maintenance: Regularly vacuum and clean the inside of the **Pull Out Tray (FIG 6)** to extend the life of the drawer slides and ensure smooth operation.



FIG 5

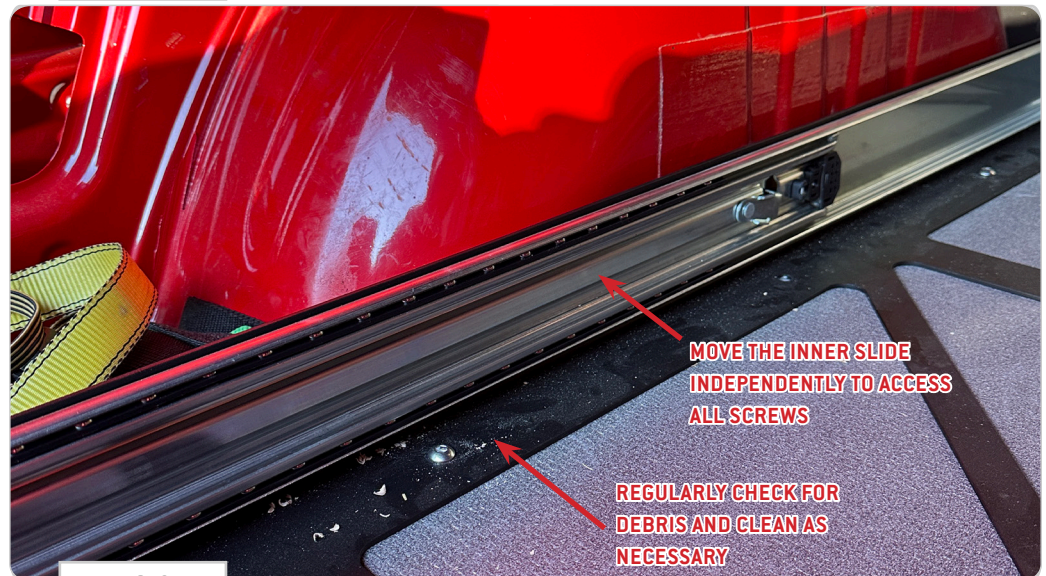


FIG 6

GET OUT AND EXPLORE!

+ LEAVE US A REVIEW

Happy with your new FVC product? We would love to hear (and see) from you! Head to the product page and click "Leave Review." Add a short review and upload a few photos to be showcased on the product page.

+ SHARE YOUR PICS

We love seeing how our customers use their FVC products and following along with your adventures. Tag us in your photos with: @flatlinevanco or send them to us via email. We love posting customer pictures in our feed!

+ NEED ANY HELP?

If you are having any issues with your product, please reach out, and we will make it right. FVC is a company of van and outdoor enthusiasts that design and use our own products, so we want you to be as stoked on your new parts as we are!



@FLATLINEVANCO