



INSTALLATION GUIDE

UNIVERSAL HITCH SLIDER

UN1137B.1 + UN1137B.2 + UN1137B.3



TOOLS REQUIRED (NOT INCLUDED)

+ 4MM ALLEN WRENCH

INSTALL INFO

TIME TO INSTALL THIS PRODUCT: 15 MINUTES

BEFORE YOU START

Please inspect the product and packaging upon delivery to ensure there are no issues and that all parts and hardware are accounted for.

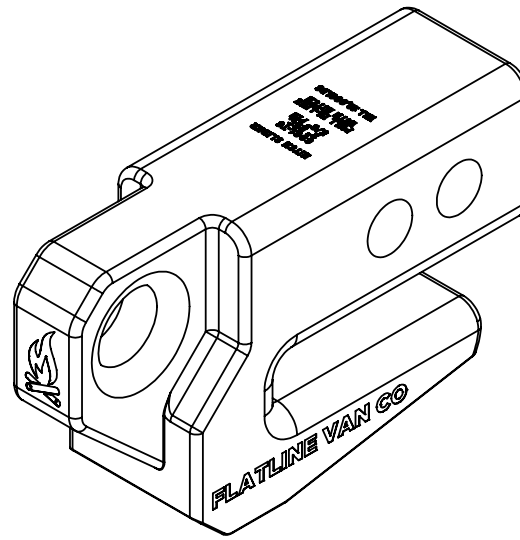
Contact us ASAP if anything is missing at:
support@flatlinevanco.com

BEFORE YOU START

All Flatline Van Co products must be properly assembled and secured before attaching to your vehicle. Improper attachment could result in an automobile accident, and could cause serious bodily injury or death to you or to others involved. You are responsible for assembling and securing Flatline Van Co products to your vehicle, checking the mounting points and attachments prior to use, and regularly inspecting the products for wear and or damage. We always recommend you use a professional to install any aftermarket accessories to your vehicle. If you have no mechanical experience and are not thoroughly familiar with the installation procedures, you must have the product installed by a professional installer or other qualified persons. The responsibility is yours and must be taken seriously for everyone's safety.



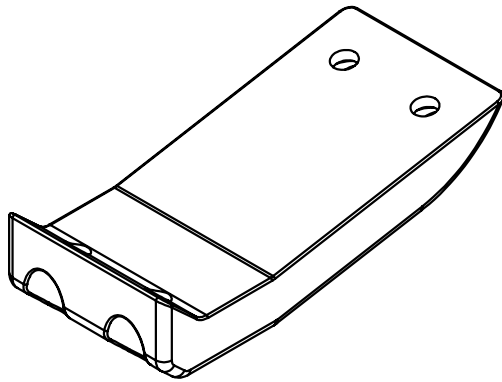
PACKAGE CONTENTS



HITCH SLIDER

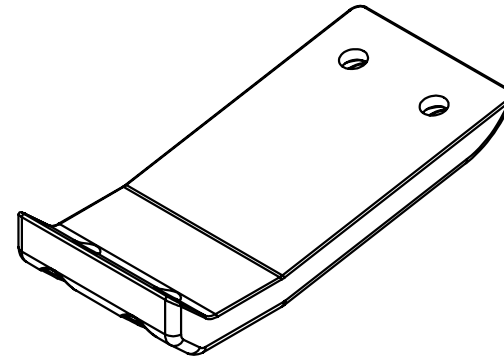
QTY: 1

REPLACEMENT PARTS (OPTIONAL)



DELRIN SKID PAD

QTY: 1



ALUMINUM SKID PAD

QTY: 1

TOOLS REQUIRED FOR THIS STEP: + 4MM ALLEN WRENCH

STEP | 01 LAYOUT AND INSTALL PREP

1.1 Secure Hardware: Using a 4mm Allen Wrench, double-check that all (4) M6 Counter Sunk Allen Head Bolts are secure (FIG 1). These bolts should be hand tight.



FIG 1

STEP | 02 HITCH SLIDER INSTALL

2.1 Install Hitch Slider: Using your desired 5/8" Hitch Pin, install the hitch skid into your tow hitch receiver (FIG 2-3).

NOTE - *If planning to leave the hitch skid installed for long periods of time, we recommend using a locking hitch pin.*

TOOLS REQUIRED FOR THIS STEP:

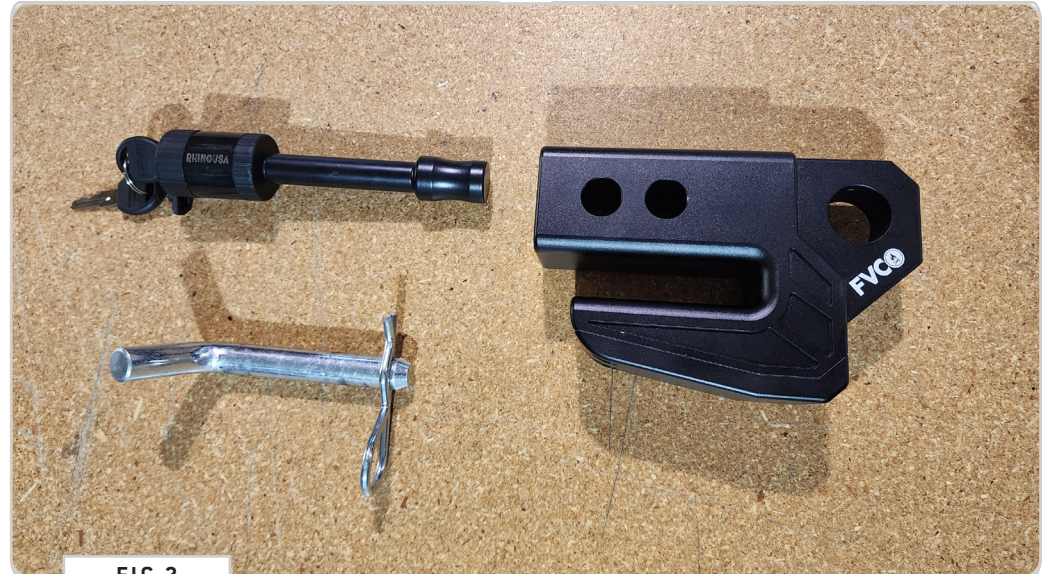


FIG 2



FIG 3

TOOLS REQUIRED FOR THIS STEP: + 4MM ALLEN WRENCH

STEP | 03 REPLACING SKID PAD

FVC offers replaceable skid pads (Aluminum or Delrin)

Part Numbers:

UN1137B.2 - Delrin Skid Pad

UN1137B.3 - Aluminum Skid Pad

--

3.1 Clear Obstructions (if applicable): Clear any material that may have folded over the counter sunk allen head bolts.

3.2 Remove Screws: Using a 4mm Allen Wrench, remove the (4) M6 Counter Sunk Allen Head Bolts and remove the damaged skid pad.

3.3 Clean Mounting Surface: Clean off the mounting surface of Hitch Slider.

3.4 Install New Skid Pad: Install your new Skid Pad using the retained M6 Counter Sunk Allen Head Bolts.



FIG 4



FIG 5

GET OUT AND EXPLORE!

+ LEAVE US A REVIEW

Happy with your new FVC product? We would love to hear (and see) from you! Head to the product page and click "Leave Review." Add a short review and upload a few photos to be showcased on the product page.

+ SHARE YOUR PICS

We love seeing how our customers use their FVC products and following along with your adventures. Tag us in your photos with: @flatlinevanco or send them to us via email. We love posting customer pictures in our feed!

+ NEED ANY HELP?

If you are having any issues with your product, please reach out, and we will make it right. FVC is a company of van and outdoor enthusiasts that design and use our own products, so we want you to be as stoked on your new parts as we are!



@FLATLINEVANCO