



# INSTALLATION GUIDE

## UNIVERSAL SURF HOOKS

UN1104B



### TOOLS REQUIRED (NOT INCLUDED)

- + TAPE MEASURE
- + 3/16" ALLEN WRENCH
- + 9/16" WRENCH
- + 9/16" SOCKET
- + 3/8" WRENCH OR SOCKET

### INSTALL INFO

TIME TO INSTALL THIS PRODUCT: 30 MINUTES

Additional help is suggested for a few of the install steps.

### BEFORE YOU START

Please inspect the product and packaging upon delivery to ensure there are no issues and that all parts and hardware are accounted for.

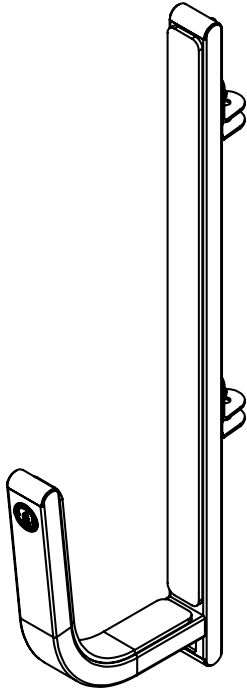
Contact us ASAP if anything is missing at:  
[support@flatlinevanco.com](mailto:support@flatlinevanco.com)

# BEFORE YOU START

All Flatline Van Co products must be properly assembled and secured before attaching to your vehicle. Improper attachment could result in an automobile accident, and could cause serious bodily injury or death to you or to others involved. You are responsible for assembling and securing Flatline Van Co products to your vehicle, checking the mounting points and attachments prior to use, and regularly inspecting the products for wear and or damage. We always recommend you use a professional to install any aftermarket accessories to your vehicle. If you have no mechanical experience and are not thoroughly familiar with the installation procedures, you must have the product installed by a professional installer or other qualified persons. The responsibility is yours and must be taken seriously for everyone's safety.

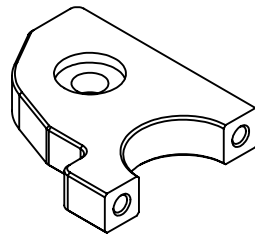


# PACKAGE CONTENTS



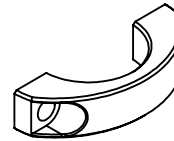
PADDED SURF HOOK

QTY: 2



CLAMP BODY

QTY: 4



CLAMP

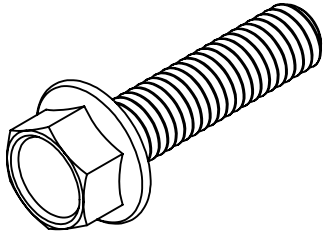
QTY: 4



BUSHING

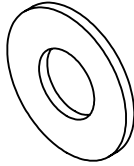
QTY: 8

# HARDWARE



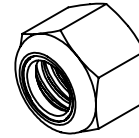
3/8-16 X 1.5 FLANGED HEX HEAD  
SCREW

QTY: 4



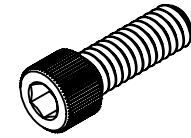
3/8 SCREW FLAT WASHER

QTY: 8



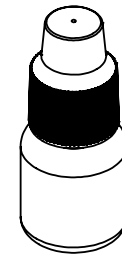
3/8-16 NYLON INSERT LOCKNUT

QTY: 4



1/4-20 X 0.75 SOCKET HEAD  
SCREW

QTY: 8



5ML THREADLOCKER BOTTLE

QTY: 1

TOOLS REQUIRED FOR THIS STEP: + 3/8" WRENCH OR SOCKET

## STEP | 01 SURF HOOK ASSEMBLY

**1.1 Determine Hook Folding Direction:** Before starting assembly, determine your preferred folding direction of the hooks (**FIG 1**).

**1.2 Loosen Top Brackets:** Using a 3/8" Wrench, loosen the screws on the top brackets (**FIG 2**). Do not remove them entirely, just loosen them enough for adjustment in the next step.

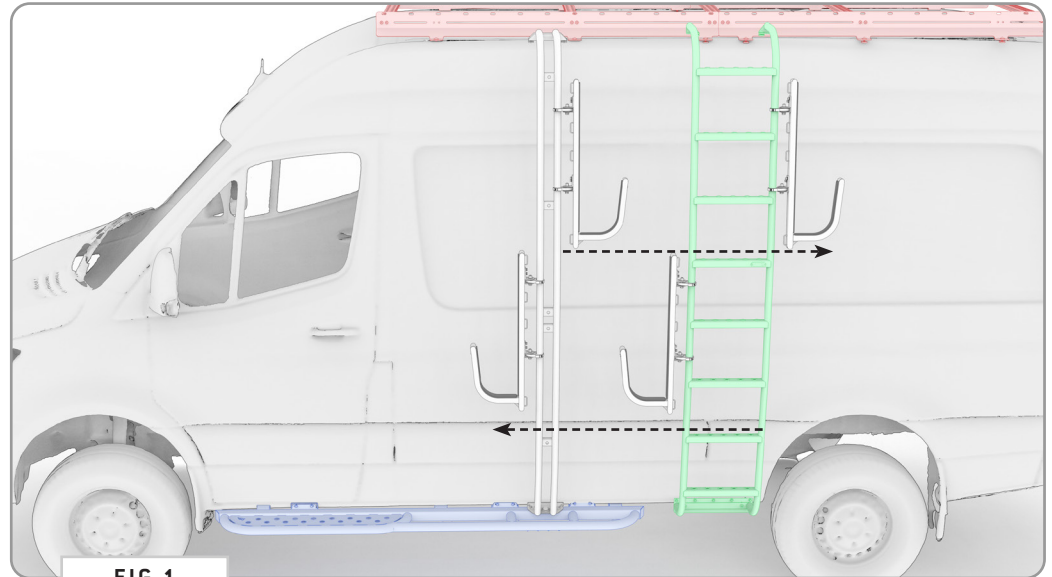


FIG 1

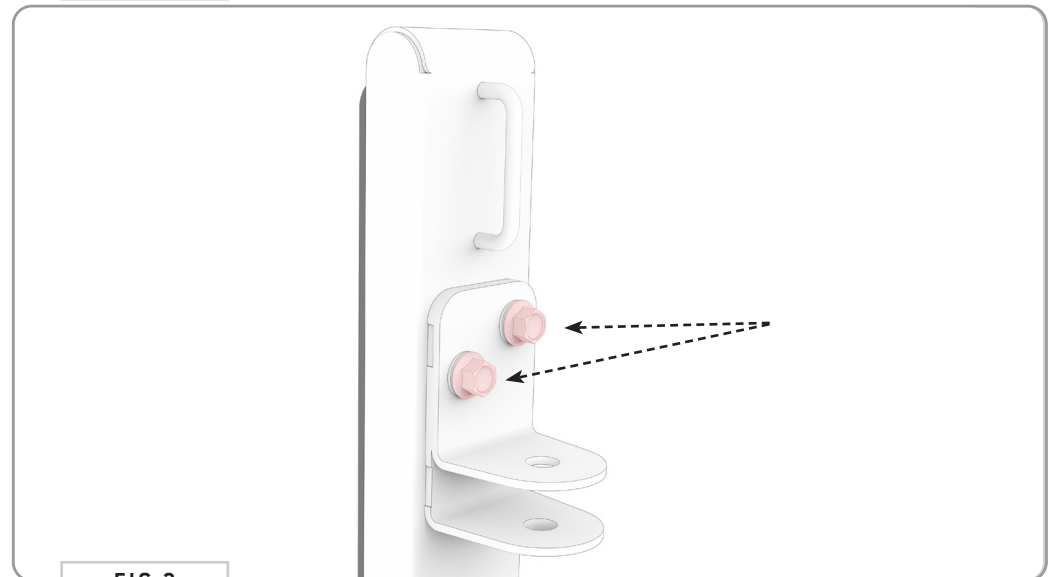


FIG 2

**TOOLS REQUIRED FOR THIS STEP:**

- + 3/8" WRENCH OR SOCKET
- + 9/16" WRENCH OR SOCKET

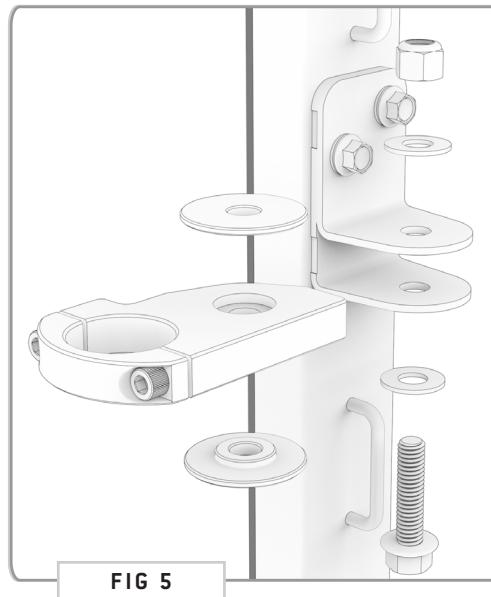
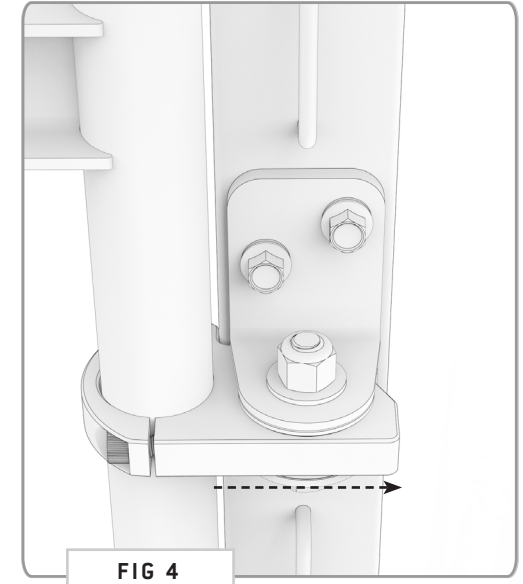
## STEP | 01 SURF HOOK ASSEMBLY

**1.3 Orient Pivot Points:** If you would like the **Surf Hooks** to swing to the **left**, orient the **Pivot Points** as shown in **FIG 3**. If you would like them to swing to the **right**, orient them as shown in **FIG 4**.

**1.4 Loosely Assemble Pivot Points:** Assemble the pivot points loosely using (2ea) **Bushings**, And **Machined Clamps**. Loosely attach **Pivot Points** to **Surf Hook** using **3/8-16" Flanged Hex Head Screws**, **Flat Washers** and **Nylon Locknuts** (**FIG 5**).

**1.5 Tighten Pivot Bolt:** Once the **Pivot Points** are in place, tighten the **Pivot Bolt** securely (**FIG 6**).

**1.6 Tighten Top Brackets:** After securing the **Pivot Points**, tighten the top brackets firmly using a **3/8" Wrench** (**FIG 6**).



TOOLS REQUIRED FOR THIS STEP: + 3/16" ALLEN WRENCH

## STEP | 02 SURF HOOKS INSTALL

**2.1 Determine Install Height on Surf Pole / Ladder:** Decide the appropriate height for installation on the surf pole or ladder where you intend to mount the hooks (**FIG 7**).

**2.2 Verify Folding Direction and Install Hooks:** Confirm the folding direction of the hooks and install them at the predetermined height (**FIG 8**). Apply Loctite to ensure a secure fit.

**2.3 Verify 90 Degree Motion:** After installing the hooks, verify that they can move smoothly in a 90-degree motion.

**2.4 Tighten Pivot Point:** Ensure the **Pivot Point** is tightened sufficiently so that the **Surf Hook** does not rotate freely (**FIG 9**).

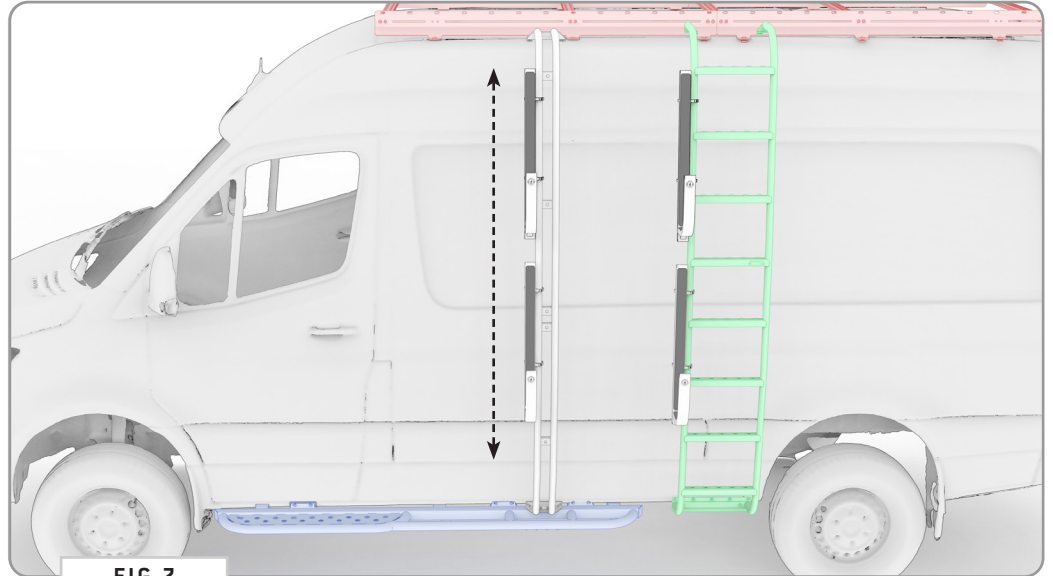


FIG 7



FIG 8

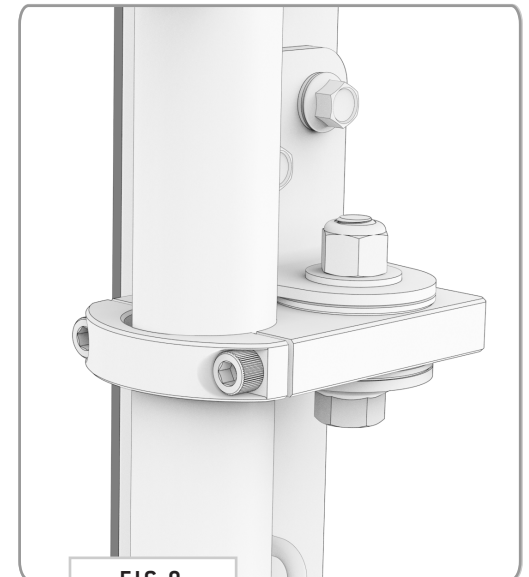


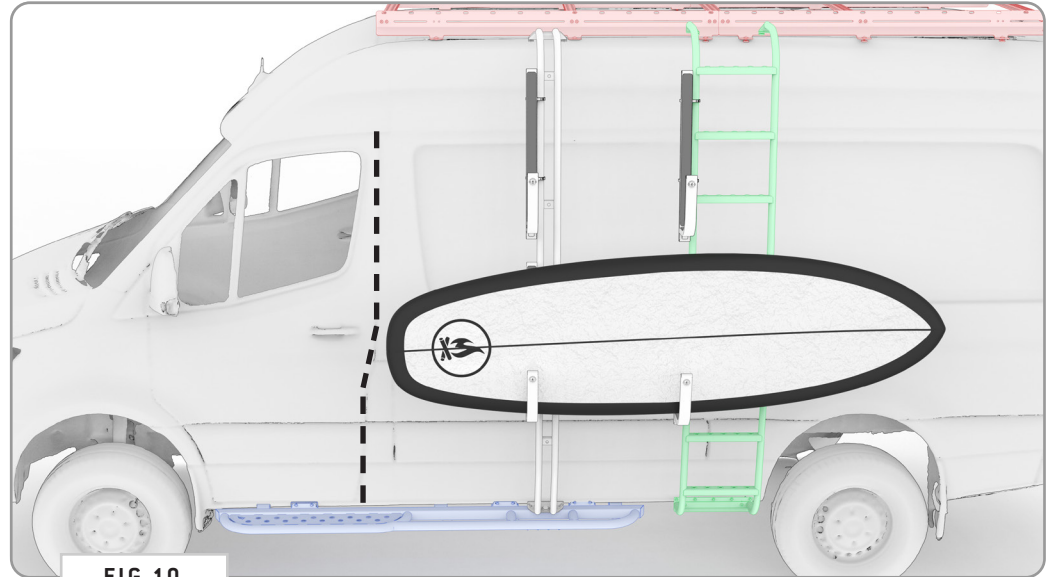
FIG 9

## STEP | 03 SECURING BOARDS

**3.1 Board Clearance:** When securing boards to the Surf Hook, always ensure that you leave enough room for the door to open and close freely (**FIG 10**).

**3.2 Board Tie-Down:** The Surf Hooks have built-in loops for running straps around your boards (**FIG 11**). Always be sure to tie-down your boards before driving, and periodically check them between stops to make sure they are secure.

### TOOLS REQUIRED FOR THIS STEP:





# GET OUT AND EXPLORE!

## + LEAVE US A REVIEW

---

Happy with your new FVC product? We would love to hear (and see) from you! Head to the product page and click "Leave Review." Add a short review and upload a few photos to be showcased on the product page.

## + SHARE YOUR PICS

---

We love seeing how our customers use their FVC products and following along with your adventures. Tag us in your photos with: @flatlinevanco or send them to us via email. We love posting customer pictures in our feed!

## + NEED ANY HELP?

---

If you are having any issues with your product, please reach out, and we will make it right. FVC is a company of van and outdoor enthusiasts that design and use our own products, so we want you to be as stoked on your new parts as we are!



@FLATLINEVANCO