



# INSTALLATION GUIDE

## MURPHY BED STEP LADDER

UN0201B



### TOOLS REQUIRED (NOT INCLUDED)

- + 5/8" WRENCH
- + 5/32" ALLEN WRENCH
- + 10MM WRENCH

### INSTALL INFO

TIME TO INSTALL THIS PRODUCT: 30 MINUTES

Additional help is suggested for a few of the install steps.

### BEFORE YOU START

Please inspect the product and packaging upon delivery to ensure there are no issues and that all parts and hardware are accounted for.

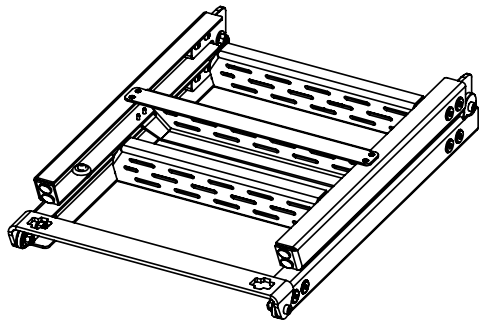
Contact us ASAP if anything is missing at:  
[support@flatlinevanco.com](mailto:support@flatlinevanco.com)

# BEFORE YOU START

All Flatline Van Co products must be properly assembled and secured before attaching to your vehicle. Improper attachment could result in an automobile accident, and could cause serious bodily injury or death to you or to others involved. You are responsible for assembling and securing Flatline Van Co products to your vehicle, checking the mounting points and attachments prior to use, and regularly inspecting the products for wear and or damage. We always recommend you use a professional to install any aftermarket accessories to your vehicle. If you have no mechanical experience and are not thoroughly familiar with the installation procedures, you must have the product installed by a professional installer or other qualified persons. The responsibility is yours and must be taken seriously for everyone's safety.

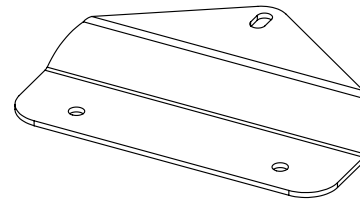


# PACKAGE CONTENTS



LADDER ASSEMBLY

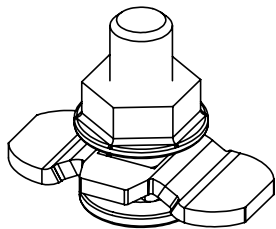
QTY: 1



LATCH PLATE

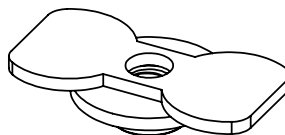
QTY: 1

# HARDWARE



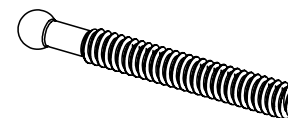
L-TRACK STUD

QTY: 2



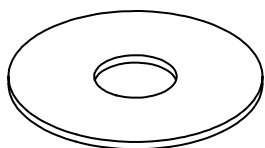
L-TRACK NUT WELDMENT

QTY: 2



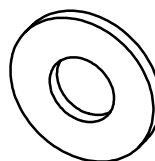
BALL STUD

QTY: 1



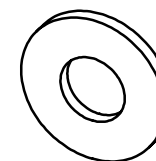
5/8" OVERSIZED FLAT WASHER

QTY: 2



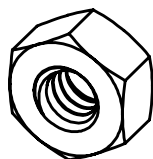
1/4" FLAT WASHER

QTY: 2



1/4" STAINLESS FLAT WASHER

QTY: 2



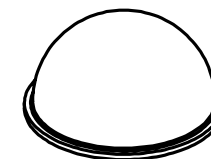
1/4-20 HEX NUT

QTY: 2



1/4-20 X 0.75 BUTTON HEAD  
HEX DRIVE SCREW

QTY: 2



5/8" ADHESIVE BUMPER

QTY: 2

TOOLS REQUIRED FOR THIS STEP:

**STEP | 01 LAYOUT AND INSTALL PREP**

**1.1 Stow Away Bed:** If your Murphy bed is currently deployed, fold it completely away into its stowed position and ensure it is safely secured (FIG 1-2).



FIG 1



FIG 2

TOOLS REQUIRED FOR THIS STEP:

## STEP | 02 INSTALL MURPHY LADDER

**2.1 Identify Mounting Area:** Locate the L-track channels on your Murphy Bed Panel (**FIG 3**).

**2.2 Dry-Fit Ladder:** Determine your desired mounting location along the Bed Panel and take note for the next step (**FIG 4**).

**NOTE** - Be sure to check that there is enough clearance for the deployment of the ladder.

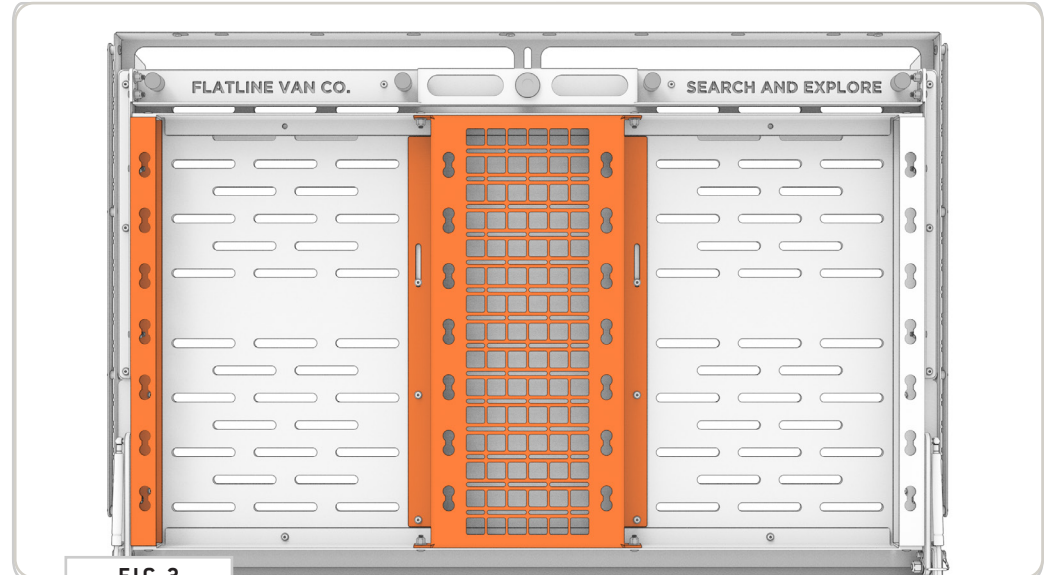


FIG 3



FIG 4

TOOLS REQUIRED FOR THIS STEP:

## STEP | 02 INSTALL MURPHY LADDER

**2.3 Insert L-Track Studs:** Insert the two **L-Track Studs** into the lower section of the track where you want the base of the ladder to rest. **(FIG 5)**. Tape can be helpful to keep the **L-Track Studs** in place while you fit the ladder **(FIG 6)**.



FIG 5



FIG 6

TOOLS REQUIRED FOR THIS STEP: + 5/8" WRENCH OR SOCKET

## STEP | 02 INSTALL MURPHY LADDER

**2.4 Attach Ladder to Panel:** Align the **Mounting Bracket** at the base of the **Ladder Assembly** with the protruding **L-Track Studs** (FIG 7).

**2.5 Secure Ladder:** Secure the ladder by sliding **3/8" Oversized Fender Washers** over each stud and tighten with the **L-Track Stud Nut** (FIG 8).



TOOLS REQUIRED FOR THIS STEP: + 5/32" ALLEN WRENCH

## STEP | 02 INSTALL MURPHY LADDER

**2.6 Position L-Track Nut Weldments:** Fit the **Latch Plate (FIG 9)** to the bed's **Center Molle Panel** and determine the two **L-Track Keyways** that will be used for install (**FIG 10-11**). Slide the two **L-Track Nut Weldments** into these keyways and secure using tape if necessary.

**PRO-TIP:** *You can thread in the supplied 1/4-20 screw to make getting the weldment into position a little easier.*

**2.7 Attach Latch Plate:** Align the holes of the **Latch Plate Bracket** with the **Nut Weldments**. Thread the two **1/4-20 x 0.75" Button Head Screws** through the **1/4" Flat Washers** and into the **L-Track Nuts (FIG 12)**. Tighten securely.



FIG 9



FIG 10



FIG 11



FIG 12

TOOLS REQUIRED FOR THIS STEP: + 10MM WRENCH

## STEP | 02 INSTALL MURPHY LADDER

**2.8 Install Ball Stud:** Take the **Ball Stud** and place one **1/4" Passivated Washer** and one **1/4-20 Hex Nut** onto it in the orientation shown in **(FIG 13)**. Push the thread of the ball stud through the central mounting tab on the **Latch Plate Bracket**. On the opposite side of the bracket tab, slide on the **second Washer** and **Hex Nut**. Do not fully tighten these nuts yet. Leave them loose enough so you can adjust the depth and position of the ball stud.

**2.9 Tune Up Button Latch:** Using two **10MM Wrenches**, loosen the **Ball Stud** and adjust as needed. Tighten **Jam Nuts** and verify adjustment by softly pressing the latch against the stud. The ladder should click into place easily, release smoothly, and should be as centered as possible **(FIG 14)**.

Moving the **Ball Stud inward** will *increase* compression, moving the **Ball Stud outward** will *decrease* compression.

**NOTE** - Do not force the latch closed. If compression is too tight, damage to the latch could occur.



FIG 13

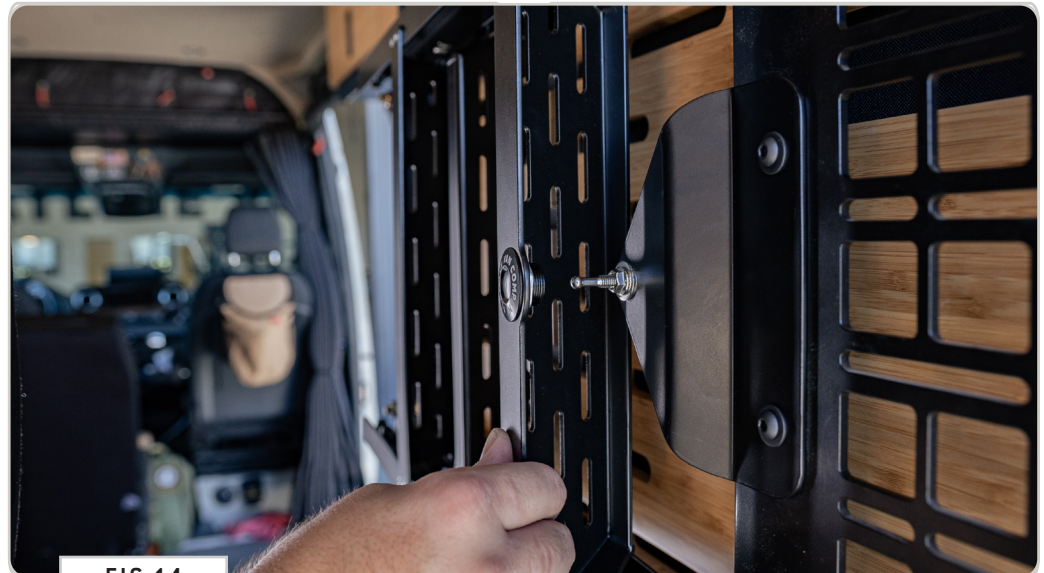


FIG 14

TOOLS REQUIRED FOR THIS STEP:

### STEP | 03 FINAL CHECKS

**3.1 Check Ladder Operation:** Unlatch the **Bed Ladder**, fold the **Murphy Bed Panel** down into its sleeping position, and deploy the ladder (**FIG 15**).

Step back and check its path of travel. Ensure that the ladder mechanism operates smoothly and does not interfere with your bed's gas struts, cabinetry, or side-wall components.

**3.2 Finalize Install:** Fold the bed panel back up into its stowed position.

Identify where the bottom legs or frame of the ladder make contact (or sit closest to) the bed panel when latched shut.

Clean the area, peel the backing off the Self-Adhesive Rubber Bumpers, and firmly press them onto the frame or bed panel near the bottom of the ladder legs (**FIG 16**).



FIG 15



FIG 16

# GET OUT AND EXPLORE!

## + LEAVE US A REVIEW

---

Happy with your new FVC product? We would love to hear (and see) from you! Head to the product page and click "Leave Review." Add a short review and upload a few photos to be showcased on the product page.

## + SHARE YOUR PICS

---

We love seeing how our customers use their FVC products and following along with your adventures. Tag us in your photos with: @flatlinevanco or send them to us via email. We love posting customer pictures in our feed!

## + NEED ANY HELP?

---

If you are having any issues with your product, please reach out, and we will make it right. FVC is a company of van and outdoor enthusiasts that design and use our own products, so we want you to be as stoked on your new parts as we are!



@FLATLINEVANCO