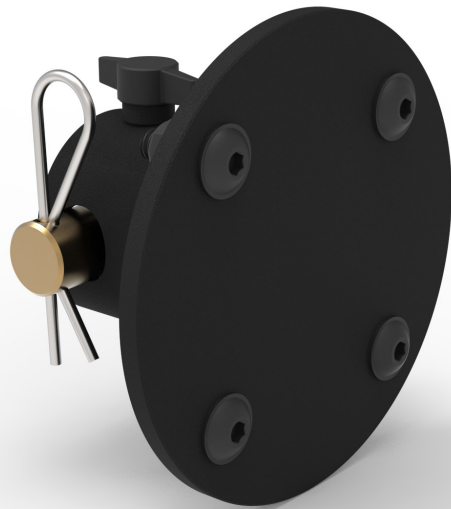




# INSTALLATION GUIDE

## TIRE CARRIER ROTOPAX ADAPTER MOUNT UN0117B



### TOOLS REQUIRED (NOT INCLUDED)

- + 3/16" ALLEN WRENCH
- + 7/16" SOCKET OR WRENCH

### INSTALL INFO

TIME TO INSTALL THIS PRODUCT: 30 MINUTES

Additional help is suggested for a few of the install steps.

### BEFORE YOU START

Please inspect the product and packaging upon delivery to ensure there are no issues and that all parts and hardware are accounted for.

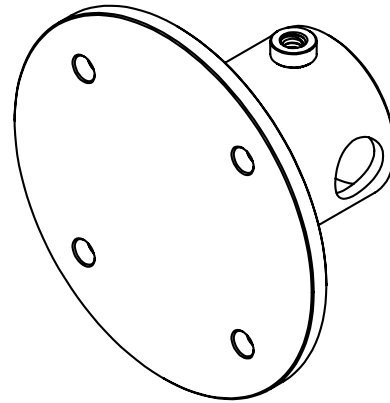
Contact us ASAP if anything is missing at:  
[support@flatlinevanco.com](mailto:support@flatlinevanco.com)

# BEFORE YOU START

All Flatline Van Co products must be properly assembled and secured before attaching to your vehicle. Improper attachment could result in an automobile accident, and could cause serious bodily injury or death to you or to others involved. You are responsible for assembling and securing Flatline Van Co products to your vehicle, checking the mounting points and attachments prior to use, and regularly inspecting the products for wear and or damage. We always recommend you use a professional to install any aftermarket accessories to your vehicle. If you have no mechanical experience and are not thoroughly familiar with the installation procedures, you must have the product installed by a professional installer or other qualified persons. The responsibility is yours and must be taken seriously for everyone's safety.



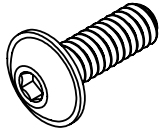
# PACKAGE CONTENTS



ROTOPAX MOUNT ADAPTER

QTY: 1

# HARDWARE



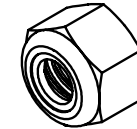
1/4-20 X 0.75  
FLANGED HEX  
HEAD SCREW

QTY: 4



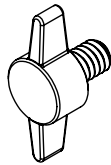
1/4" SCREW FLAT  
WASHER

QTY: 4



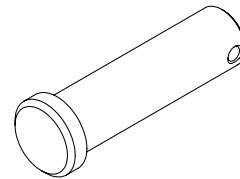
1/4-20 NYLON  
LOCKNUT

QTY: 4



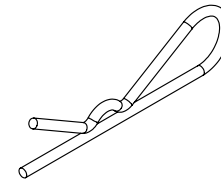
1/4-20 PLASTIC  
HEAD THUMB  
SCREW

QTY: 1



CLEVIS PIN

QTY: 1



COTTER PIN

QTY: 1

TOOLS REQUIRED FOR THIS STEP: + 7/16" SOCKET OR WRENCH

## STEP | 01 LAYOUT AND INSTALL PREP

**1.1 Determine Depth of Lock Rod:** You may need to adjust the depth of the **Lock Rod** to accommodate clearance of the install of your new **Rotopax Mount Adapter** (FIG 1).

**1.2 Adjust Depth of Lock Rod:** Use a 7/16" Wrench or Socket to remove and reposition the 1/4" Hex Head Screws and Washers that hold the **Lock Rod** in place as needed (FIG 2).

**NOTE -** Please note that this install will need to be done with your wheel and tire **mounted to the carrier**, so dry fitting the **Lock Rod** with the **Rotopax Adapter Mount** on **beforehand** will save you from having to take it on and off multiple times for adjustment.



FIG 1

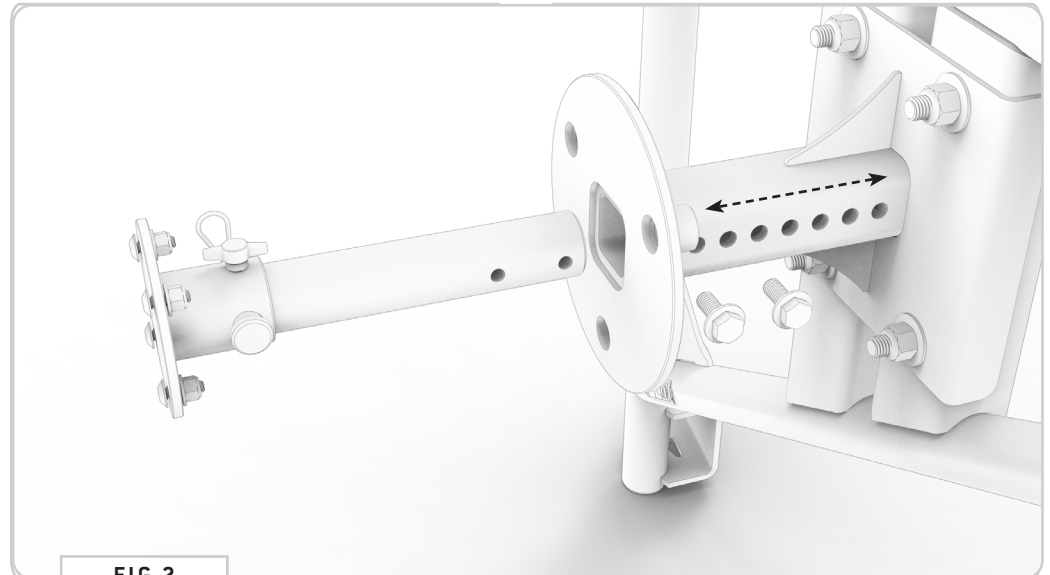


FIG 2

## STEP | 02 INSTALL ROTOPAX ADAPTER

**2.1 Position Rotopax Adapter on Tire Carrier:** Set the **Adapter Mount** onto the **Lock Rod** of your **Rear Tire Carrier** (FIG 3).

**2.2 Pin Rotopax Adapter to Carrier:** Use the **Clevis and Cotter Pins** to keep the **Adapter Mount** in place (FIG 4+5).

**2.3 Tighten Rotopax Adapter in Place:** Use the **Setting Screw** to tighten the **Adapter Mount** to the **Lock Rod** (FIG 6).

**NOTE -** Images depict this install without a wheel mounted to the carrier for visibility of components therein.

**NOTE -** To fully “lock” your **Rotopax Adapter Mount**, you would need both the **Rotopax Locking Mount** ([LOX Pack Mount](#)), and a **5/8” sized Hitch Pin Lock**.

### TOOLS REQUIRED FOR THIS STEP:



**TOOLS REQUIRED FOR THIS STEP:** + 3/16" ALLEN WRENCH  
+ 7/16" SOCKET OR WRENCH

### STEP | 03 INSTALL ROTOPAX MOUNT

**3.1 Attach Rotopax to Adapter Mount:** Attach the Rotopax Mount to the Adapter Mount using the supplied 1/4-20 x 0.75 Flanged Button Head Screws, Flat Washers and Nylon Locknuts (FIG 7+8).

**NOTE** - Images depict this install without a wheel mounted to the carrier for visibility of components therein.

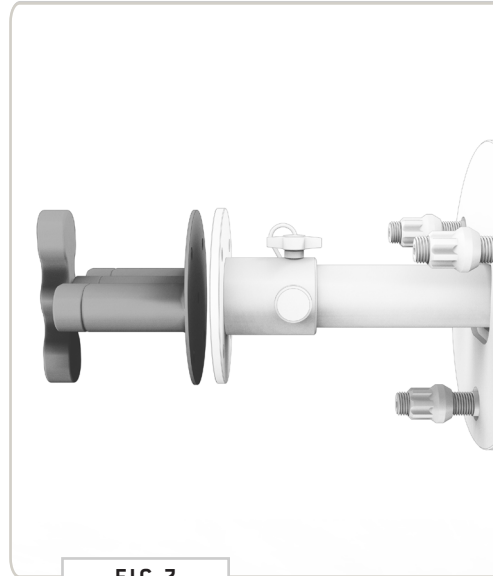


FIG 7

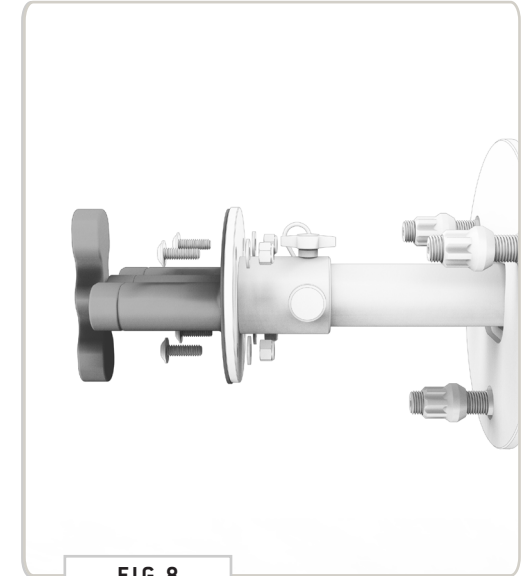


FIG 8

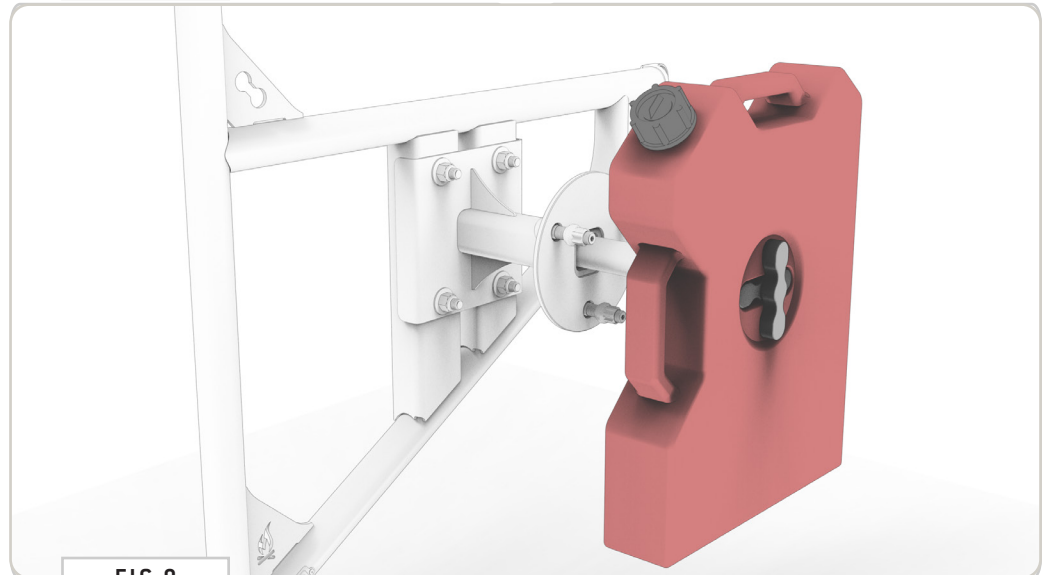


FIG 9

# GET OUT AND EXPLORE!

## + LEAVE US A REVIEW

---

Happy with your new FVC product? We would love to hear (and see) from you! Head to the product page and click "Leave Review." Add a short review and upload a few photos to be showcased on the product page.

## + SHARE YOUR PICS

---

We love seeing how our customers use their FVC products and following along with your adventures. Tag us in your photos with: @flatlinevanco or send them to us via email. We love posting customer pictures in our feed!

## + NEED ANY HELP?

---

If you are having any issues with your product, please reach out, and we will make it right. FVC is a company of van and outdoor enthusiasts that design and use our own products, so we want you to be as stoked on your new parts as we are!



@FLATLINEVANCO