



INSTALLATION GUIDE

TRANSIT HEADLINER SHELF AND CURTAIN ROD

TR5021B + TR5022B



TOOLS REQUIRED (NOT INCLUDED)

- + 7MM SOCKET
- + RATCHET EXTENSION
- + 7/16" WRENCH OR SOCKET
- + 5/32" ALLEN WRENCH

INSTALL INFO

TIME TO INSTALL THIS PRODUCT: 1 HOUR

Additional help is suggested for a few of the install steps.

BEFORE YOU START

Please inspect the product and packaging upon delivery to ensure there are no issues and that all parts and hardware are accounted for.

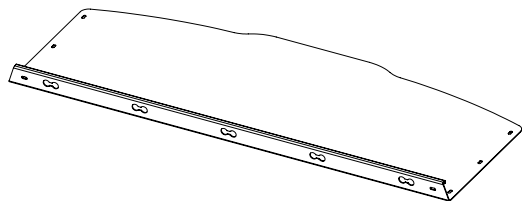
Contact us ASAP if anything is missing at:
support@flatlinevanco.com

BEFORE YOU START

All Flatline Van Co products must be properly assembled and secured before attaching to your vehicle. Improper attachment could result in an automobile accident, and could cause serious bodily injury or death to you or to others involved. You are responsible for assembling and securing Flatline Van Co products to your vehicle, checking the mounting points and attachments prior to use, and regularly inspecting the products for wear and or damage. We always recommend you use a professional to install any aftermarket accessories to your vehicle. If you have no mechanical experience and are not thoroughly familiar with the installation procedures, you must have the product installed by a professional installer or other qualified persons. The responsibility is yours and must be taken seriously for everyone's safety.

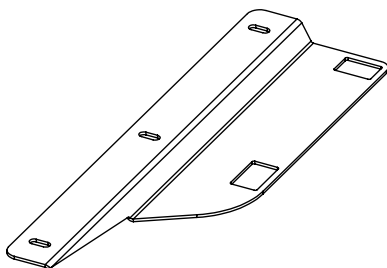


PACKAGE CONTENTS



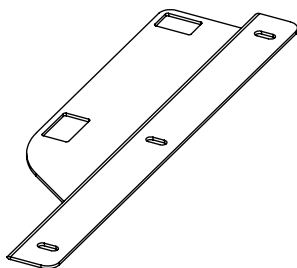
HEADLINER SHELF

QTY: 1



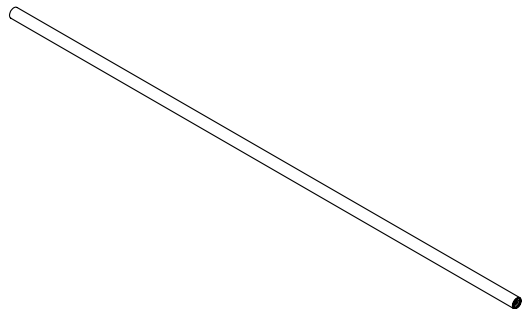
PASSENGER SIDE BRACKET

QTY: 1



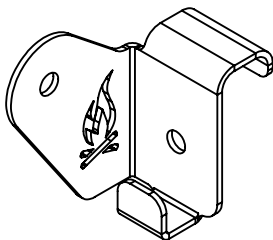
DRIVER SIDE BRACKET

QTY: 1



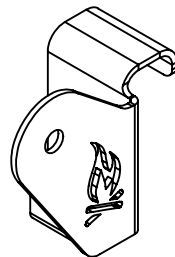
CURTAIN ROD WELDMENT

QTY: 1



DRIVER SIDE BRACKET

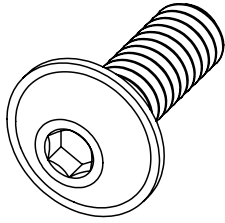
QTY: 1



PASSENGER SIDE CURTAIN BRACKET

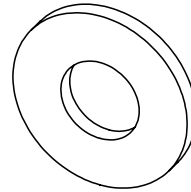
QTY: 1

HARDWARE



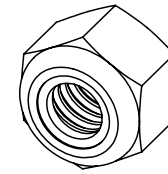
1/4-20 x 0.75 FLANGED BUTTON HEAD
HEX DRIVE SCREWS

QTY: 10



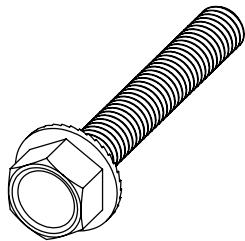
1/4" SCREW FLAT WASHER

QTY: 8



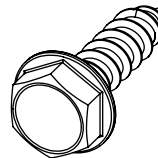
1/4" NYLON LOCKNUT

QTY: 8



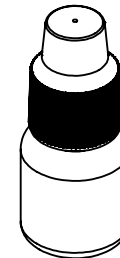
10-32 X 1.25 FLANGED HEX HEAD
SCREW

QTY: 2



#10 X 0.75 FLANGED HEX HEAD
SCREW

QTY: 2



THREADLOCKER

QTY: 1

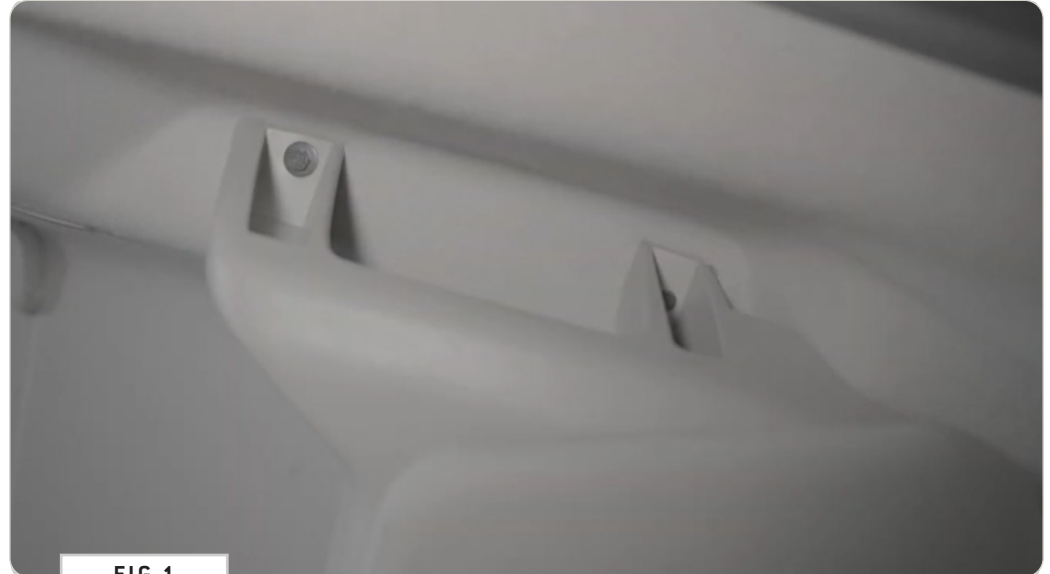
INSTALL

STEP | 01 LAYOUT AND INSTALL PREP

1.1 Remove Overhead Shelf Bolts: Use a 7MM Socket and Extension to remove the **Factory Shelf Bolts (FIG 2)** holding the **Overhead Shelf** to the mounting points you'll use to mount your new **Headliner Shelf (FIG 1)**.

NOTE - *One of these bolts are longer than the other. Be sure to note which one went where before discarding.*

TOOLS REQUIRED FOR THIS STEP: + 7MM SOCKET
+ RATCHET EXTENSION



TOOLS REQUIRED FOR THIS STEP: + 5/32" ALLEN WRENCH

STEP | 02 ASSEMBLE CURTAIN ROD

2.1 Assemble Curtain Rod: Use (1ea) 1/4-20 X 0.75" Flanged Button Head Screws with Loctite to install Driver and Passenger Side Brackets on the end of the Curtain Rod Weldment (FIG 3). Align the brackets so the mounting faces are parallel (FIG 4) and tighten the screws.

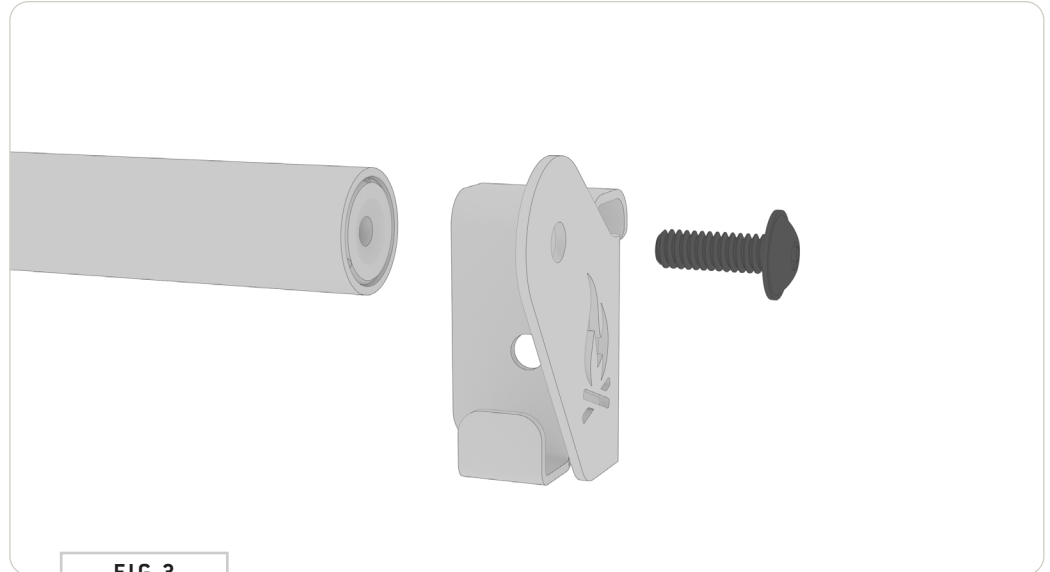


FIG 3

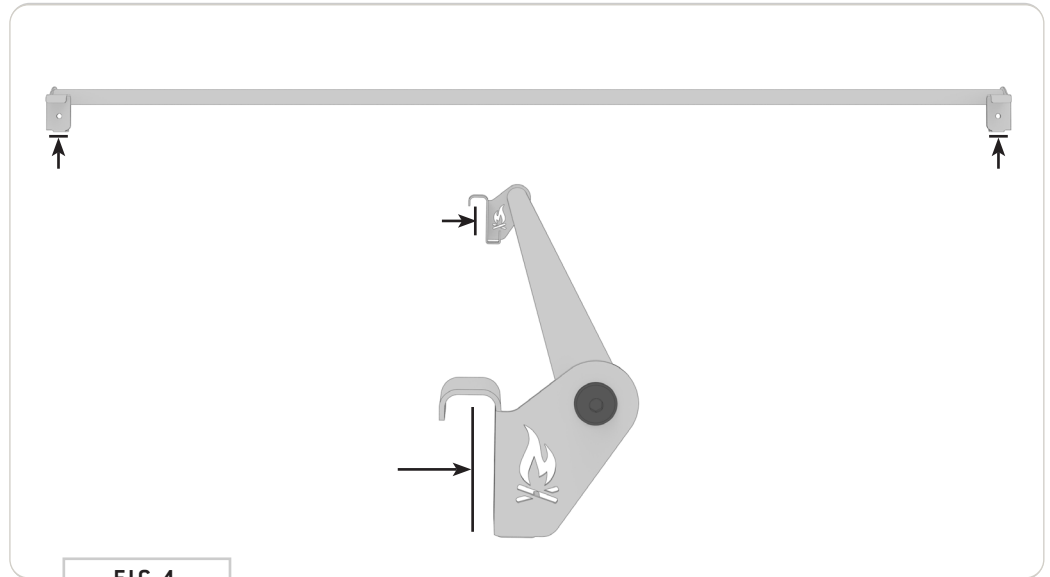


FIG 4

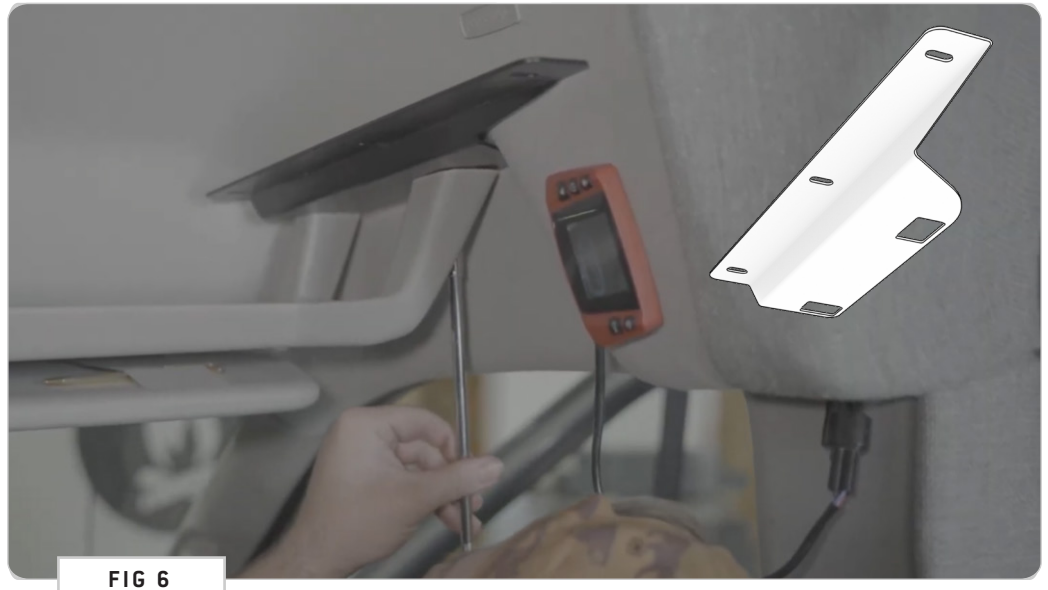
STEP | 02 INSTALL SHELF BRACKETS

2.1 Position Brackets Behind Plastic: Place the **Passenger Shelf Bracket** in the orientation shown behind the **Plastic Handle** of the **Overhead Shelf** (**FIG 5**) and align the holes of the bracket with that of the trim. Repeat for **Driver Shelf Bracket**.

2.2 Secure Brackets Behind Plastic: Secure the **Driver and Passenger Shelf Brackets** using **10-32 X 1.25 Flanged Hex Head Screws** along the *backside* and **#10 X 0.75 Flanged Hex Head Screws** along the *frontside* (**FIG 6**).

NOTE - Replace the *longer* factory bolt with the **10-32 X 1.25 Flanged Hex Head Screws** and the *shorter* factory bolts with **#10 X 0.75 Flanged Hex Head Screws**.

TOOLS REQUIRED FOR THIS STEP: + 7MM SOCKET
+ RATCHET EXTENSION



STEP | 03 INSTALL CURTAIN ROD

3.1 Position Headliner Shelf: Place the **Headliner Shelf** on top of the **Shelf Brackets** and position it snug against the front of the cavity above the **Factory Overhead Shelf** (FIG 7).

3.2 Install Curtain Rod: Place the hooks of the **Curtain Rod** onto the front flange of the **Headliner Shelf** and align the mounting holes of the **Rod** to that of the **Shelf**. Secure using (2) **1/4-20 x 0.75 Flanged Button Head Hex Drive Screws, Flat Washers and Nylon Locknuts** (FIG 8-9).

TOOLS REQUIRED FOR THIS STEP: + 5/32" ALLEN WRENCH
+ 7/16" WRENCH OR SOCKET



FIG 7



FIG 8



FIG 9

STEP | 04 INSTALL HEADLINER SHELF

4.1 Install Headliner Shelf: Use (6) 1/4-20 X 0.75 Flanged Button Head Hex Drive Screws, Flat Washers, And Nylon Locknuts to loosely install the Headliner Shelf to the Brackets in the stacking configuration shown in FIG 10. Notice that there is a fair amount of adjustment built in to the shelf and brackets. Position the shelf so that it is as far *forward* as possible and *centered* in the upper cavity of the van.

4.2 Secure Headliner Shelf and Tighten Fasteners: Once you are satisfied with the placement of the shelf, go back and tighten all fasteners used on the shelf and brackets.

TOOLS REQUIRED FOR THIS STEP: + 5/32" ALLEN WRENCH
+ 7/16" WRENCH OR SOCKET

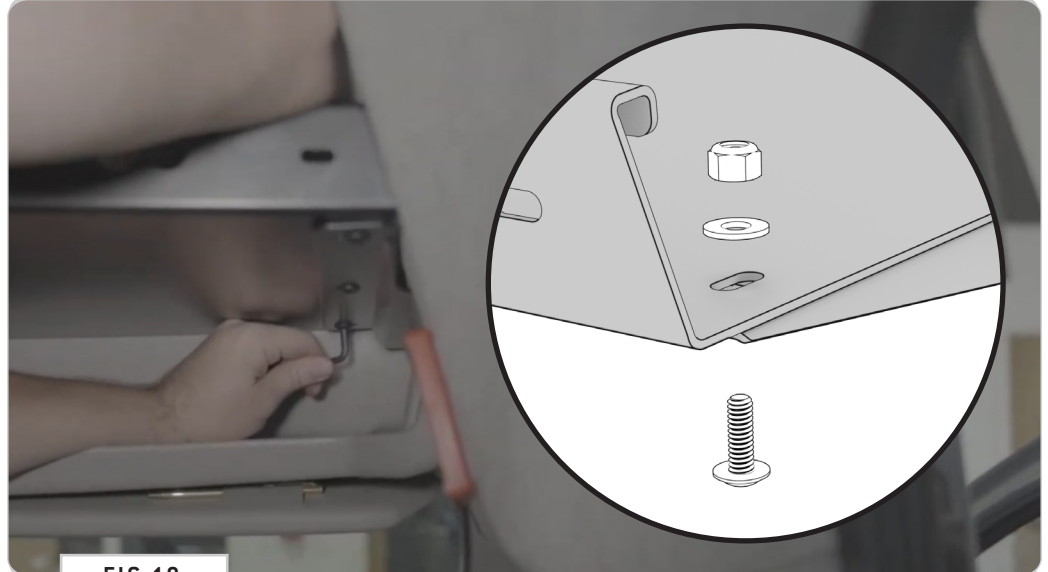


FIG 10



FIG 11

GET OUT AND EXPLORE!

+ LEAVE US A REVIEW

Happy with your new FVC product? We would love to hear (and see) from you! Head to the product page and click "Leave Review." Add a short review and upload a few photos to be showcased on the product page.

+ SHARE YOUR PICS

We love seeing how our customers use their FVC products and following along with your adventures. Tag us in your photos with: @flatlinevanco or send them to us via email. We love posting customer pictures in our feed!

+ NEED ANY HELP?

If you are having any issues with your product, please reach out, and we will make it right. FVC is a company of van and outdoor enthusiasts that design and use our own products, so we want you to be as stoked on your new parts as we are!



@FLATLINEVANCO