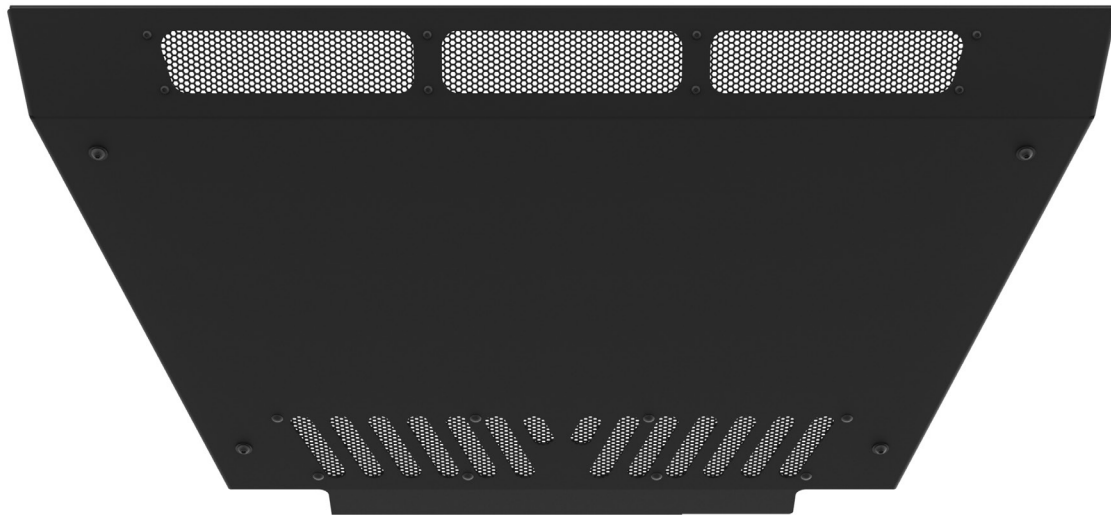




INSTALLATION GUIDE

TRANSIT VAN LIFTED SKID PLATE

TR1114B



TOOLS REQUIRED (NOT INCLUDED)

- + 9/16" SOCKET AND WRENCH
- + 7/32" ALLEN WRENCH
- + 5/32" ALLEN WRENCH

INSTALL INFO

TIME TO INSTALL THIS PRODUCT: 1 HOUR

Additional help is suggested for a few of the install steps.

BEFORE YOU START

Please inspect the product and packaging upon delivery to ensure there are no issues and that all parts and hardware are accounted for.

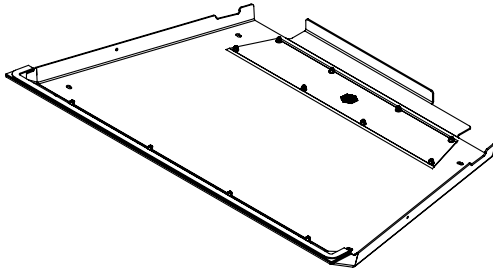
Contact us ASAP if anything is missing at:
support@flatlinevanco.com

BEFORE YOU START

All Flatline Van Co products must be properly assembled and secured before attaching to your vehicle. Improper attachment could result in an automobile accident, and could cause serious bodily injury or death to you or to others involved. You are responsible for assembling and securing Flatline Van Co products to your vehicle, checking the mounting points and attachments prior to use, and regularly inspecting the products for wear and or damage. We always recommend you use a professional to install any aftermarket accessories to your vehicle. If you have no mechanical experience and are not thoroughly familiar with the installation procedures, you must have the product installed by a professional installer or other qualified persons. The responsibility is yours and must be taken seriously for everyone's safety.

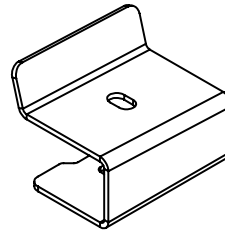


PACKAGE CONTENTS



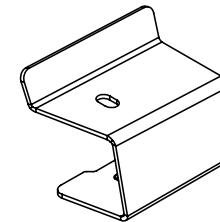
TRANSIT TRAIL SKID
PLATE

QTY: 1



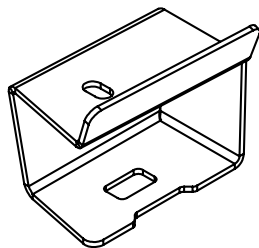
PASSENGER SIDE REAR
BRACKET

QTY: 1



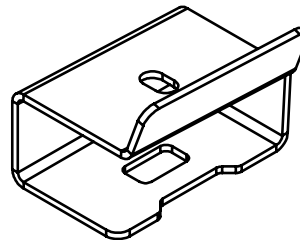
PASSENGER SIDE FRONT
BRACKET

QTY: 1



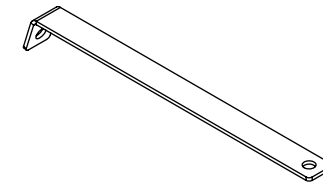
DRIVER SIDE FRONT
BRACKET

QTY: 1



DRIVER SIDE REAR
BRACKET

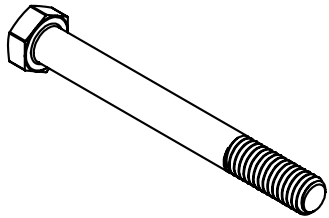
QTY: 1



FENDER BRACE

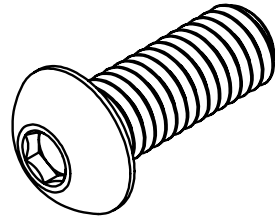
QTY: 2

SKID PLATE HARDWARE



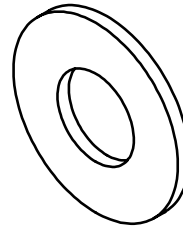
3/8-16 X 3.5 HEX HEAD
SCREW

QTY: 4



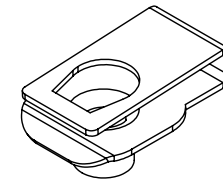
3/8-16 X 1 BUTTON HEAD
HEX HEAD SCREW

QTY: 4



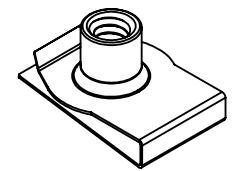
3/8-16 FLAT WASHER

QTY: 8



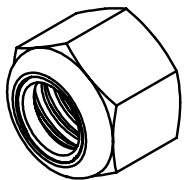
3/8-16 X 1.125 CLIP NUT

QTY: 4



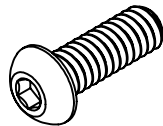
1/4-20 x 0.531 CLIP NUT

QTY: 4



3/8-16 NYLON LOCKNUT

QTY: 4



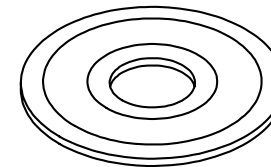
1/4-20 X 0.75 BUTTON
HEAD HEX DRIVE SCREW

QTY: 4



1/4 SCREW FLAT WASHER

QTY: 4



3/8 OVERSIZED FLAT
WASHER

QTY: 4

INSTALL

TOOLS REQUIRED FOR THIS STEP:

STEP | 01 LAYOUT AND INSTALL PREP

1.1 Prep the Brackets: Slide a 3/8-16 Clip Nut onto each of the four **Mounting Brackets**. Ensure that the raised threaded barrel faces inward toward the inner cavity of the bracket (**FIG 1-4**).

DRIVER FRONT BRACKET

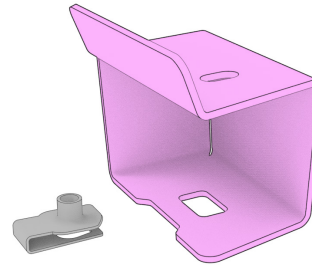


FIG 1

DRIVER REAR BRACKET

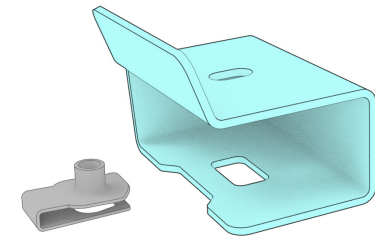


FIG 2

PASSENGER FRONT BRACKET

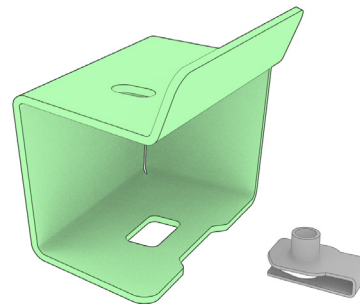


FIG 3

PASSENGER REAR BRACKET

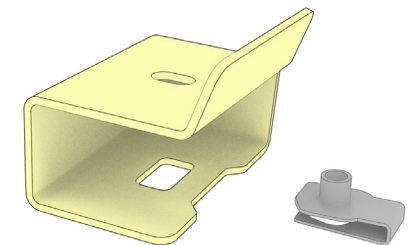


FIG 4

INSTALL

STEP | 01 LAYOUT AND INSTALL PREP

1.2 Pre-assemble Hardware: Insert a **3/8-16 X 3.5" Hex Head Screw** and **3/8" Flat Washer** up through the slot located on the top surface of each bracket (**FIG 5**).

1.3 Position on the Vehicle: Fit each bracket up to the lower bracing arms located on the underside of the van (**FIG 6**).

NOTE - The inner bracket cavity must face outward toward the side of the van. The taller brackets are designated for the front positions, and the shorter brackets belong on the back.

TOOLS REQUIRED FOR THIS STEP:

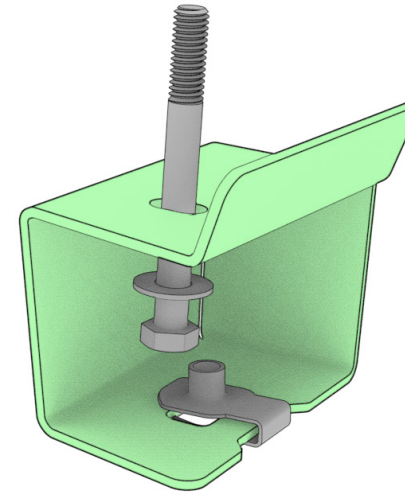


FIG 5

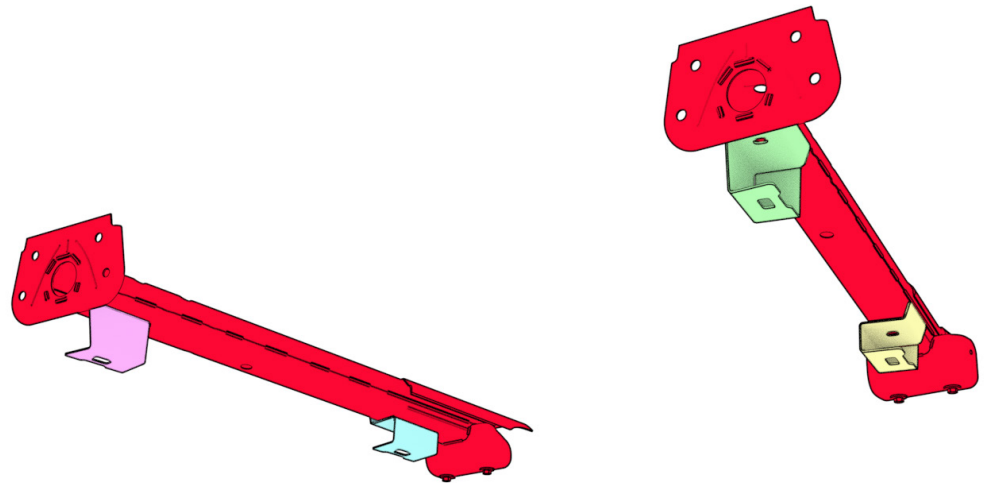


FIG 6

INSTALL

STEP | 01 LAYOUT AND INSTALL PREP

1.4 Secure to Bracing Arms: Push the 3.5" Hex Head Screw upward through the factory holes in the vehicle's bracing arm. Secure from the top using a 3/8" X 1.25" Oversized Flat Washer followed by a 3/8-16 Nylon Insert Locknut (FIG 7-8).

TOOLS REQUIRED FOR THIS STEP: + 9/16" SOCKET AND WRENCH

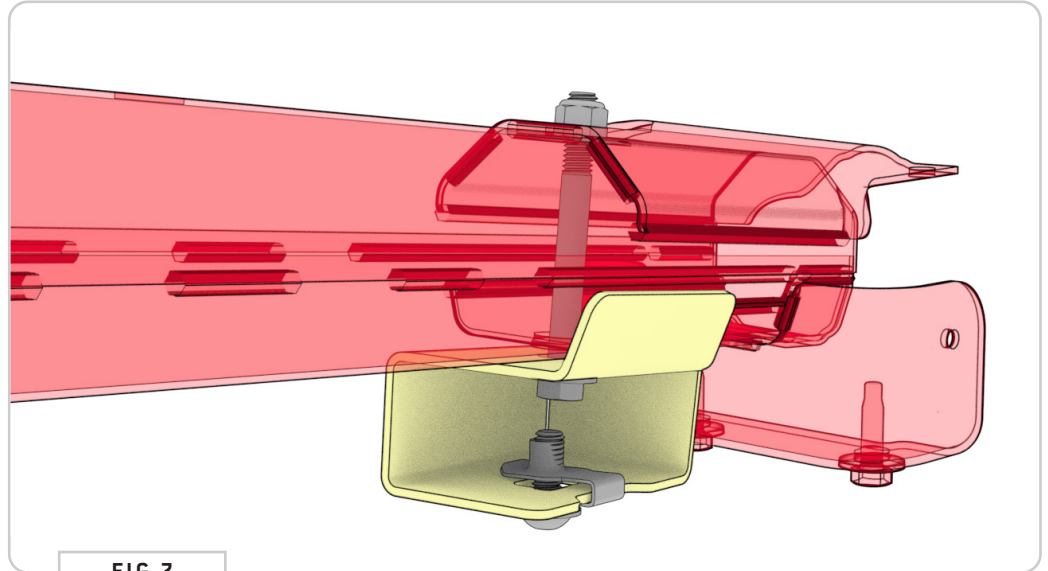


FIG 7



FIG 8

INSTALL

STEP | 02 INSTALL TRAIL SKID PLATE

2.1 Position the Skid Plate: Lift the **Transit Trail Skid Plate** into position underneath the vehicle bumper, aligning it against the four installed chassis brackets (**FIG 9**).

NOTE - A padded floor jack or another person will make this much easier.

2.2 Secure Skid Plate: Secure the **Skid Plate** to the **Brackets** by threading four **3/8-16 X 1" Button Head Screws** and **3/8" Flat Washers** (with loctite) through the plate and into the bracket's clip nuts (**FIG 10**).

TOOLS REQUIRED FOR THIS STEP: + 7/32" ALLEN WRENCH



FIG 9

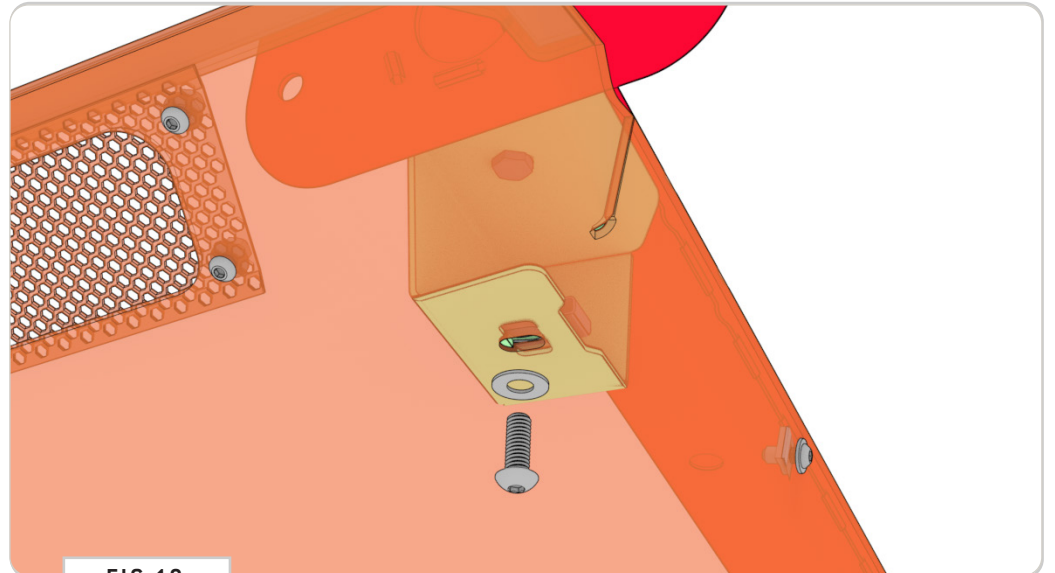


FIG 10

INSTALL

STEP | 03 INTEGRATE FENDER BRACES

3.1 Prep the Fender Braces: Slide two **1/4-20 Clip Nuts** onto each of the two **Fender Braces**. Make sure that the raised threaded barrels point outward.

3.2 Mount to the Skid Plate: Position the short leg of the fender brace behind the raised flange of the skid plate. Align it with the mounting hole located halfway along the edge.

3.3 Attach Brace: Secure the brace from the outside of the skid plate flange using a **1/4-20 X 0.75" Button Head Screw** and a **1/4" Flat Washer**.

3.4 Secure Lower Plastic Fender: Align the opposite end of the fender brace directly above the plastic inner fender liner. Working from underneath the vehicle looking up, thread a **1/4-20 X 0.75" Button Head Screw** and a **1/4" Flat Washer** up through the plastic liner and straight into the brace's clip nut.

3.5 Finalize and Mirror: Move to the opposite side of the vehicle and repeat the process.

TOOLS REQUIRED FOR THIS STEP: + 5/32" ALLEN WRENCH

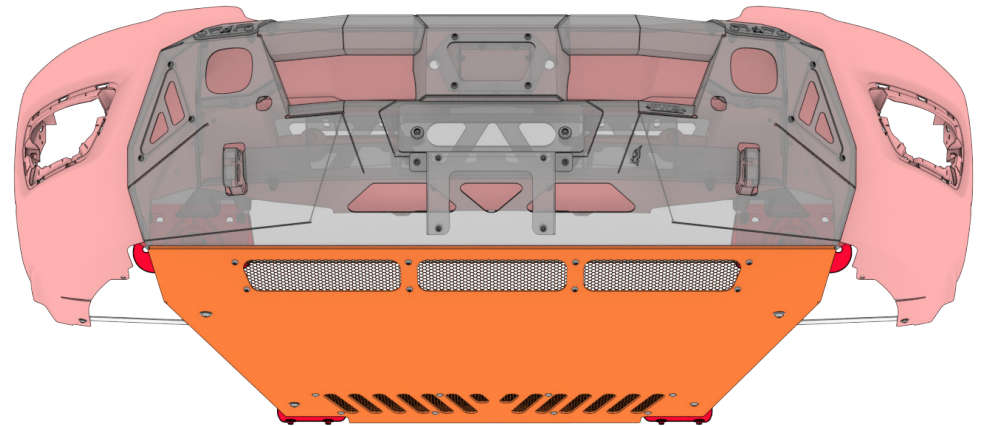


FIG 11

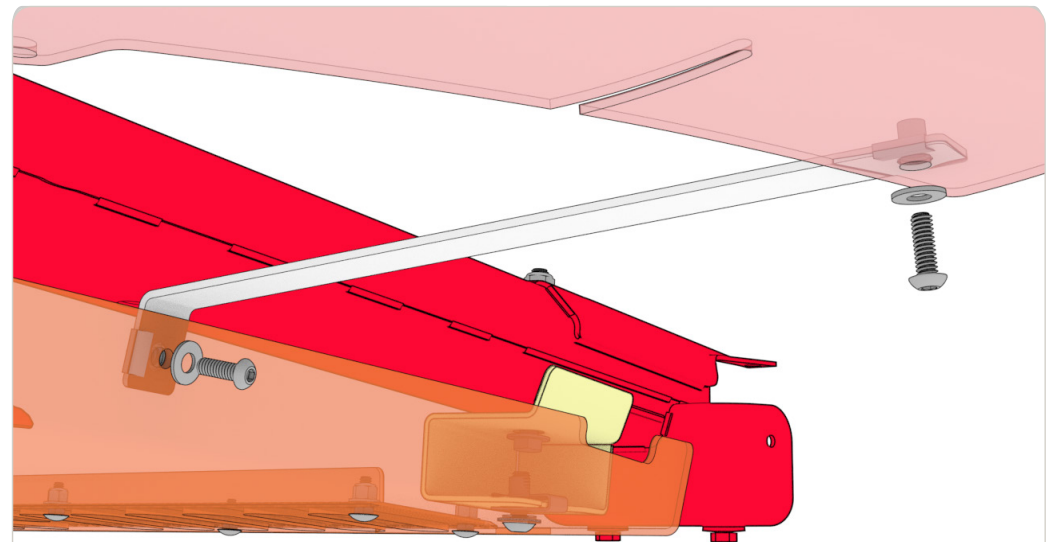


FIG 12

GET OUT AND EXPLORE!

+ LEAVE US A REVIEW

Happy with your new FVC product? We would love to hear (and see) from you! Head to the product page and click "Leave Review." Add a short review and upload a few photos to be showcased on the product page.

+ SHARE YOUR PICS

We love seeing how our customers use their FVC products and following along with your adventures. Tag us in your photos with: @flatlinevanco or send them to us via email. We love posting customer pictures in our feed!

+ NEED ANY HELP?

If you are having any issues with your product, please reach out, and we will make it right. FVC is a company of van and outdoor enthusiasts that design and use our own products, so we want you to be as stoked on your new parts as we are!



@FLATLINEVANCO