



INSTALLATION GUIDE

TRANSIT HOOD STRUT KIT

TR1109B



TOOLS REQUIRED (NOT INCLUDED)

- + 12MM WRENCH
- + 13MM WRENCH
- + RATCHET WRENCH
- + 10MM DEEP SOCKET
- + 13MM SOCKET

INSTALL INFO

TIME TO INSTALL THIS PRODUCT: 30 MINUTES

Additional help is suggested for a few of the install steps.

BEFORE YOU START

Please inspect the product and packaging upon delivery to ensure there are no issues and that all parts and hardware are accounted for.

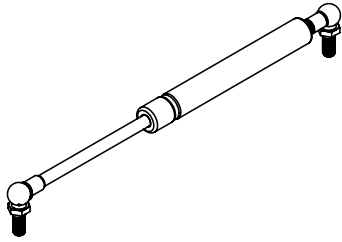
Contact us ASAP if anything is missing at:
support@flatlinevanco.com

BEFORE YOU START

All Flatline Van Co products must be properly assembled and secured before attaching to your vehicle. Improper attachment could result in an automobile accident, and could cause serious bodily injury or death to you or to others involved. You are responsible for assembling and securing Flatline Van Co products to your vehicle, checking the mounting points and attachments prior to use, and regularly inspecting the products for wear and or damage. We always recommend you use a professional to install any aftermarket accessories to your vehicle. If you have no mechanical experience and are not thoroughly familiar with the installation procedures, you must have the product installed by a professional installer or other qualified persons. The responsibility is yours and must be taken seriously for everyone's safety.

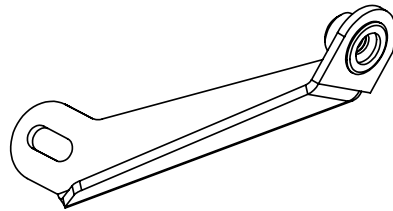


PACKAGE CONTENTS



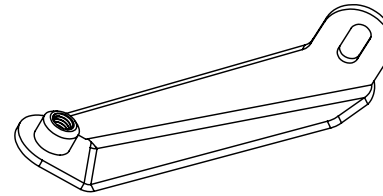
GAS STRUTS

QTY: 2



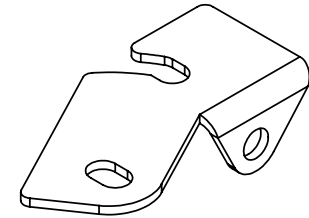
**PASSENGER SIDE
BRACE ASSEMBLY**

QTY: 1



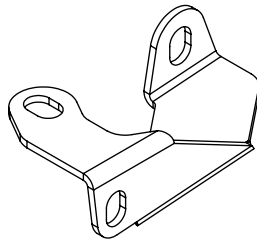
**DRIVER SIDE BRACE
ASSEMBLY**

QTY: 1



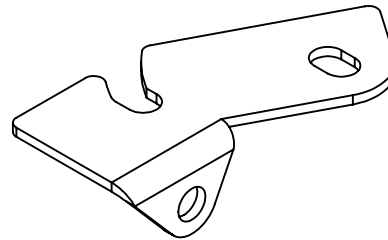
**PASSENGER SIDE
HOOD BRACKET**

QTY: 1



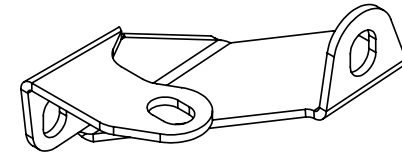
**PASSENGER SIDE BODY
BRACKET**

QTY: 1



**DRIVER SIDE HOOD
BRACKET**

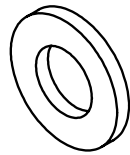
QTY: 1



**DRIVER SIDE BODY
BRACKET**

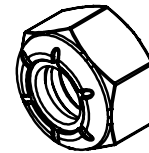
QTY: 1

HARDWARE



M8 FLAT WASHER

QTY: 2



M8 NYLON LOCKNUT

QTY: 2

TOOLS REQUIRED FOR THIS STEP:

STEP | 01 LAYOUT AND INSTALL PREP

1.1 Determine Hood Spacing: Before you start your Hood Strut Kit install, take the time to note the factory spacing of the Hood from the Van Body (FIG 1). It can help to take some photos beforehand (FIG 2).



FIG 1



FIG 2

TOOLS REQUIRED FOR THIS STEP:

STEP | 01 LAYOUT AND INSTALL PREP

1.2 Open the Hood: Open the hood and prop in the upright position (FIG 3-5).



FIG 3



FIG 4

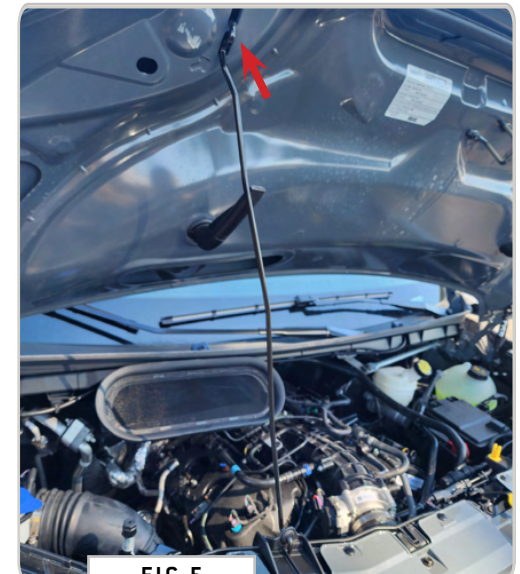


FIG 5

TOOLS REQUIRED FOR THIS STEP: + T30 TORX

STEP | 01 LAYOUT AND INSTALL PREP

1.3 Remove Headlights: Use a T30 Torx Driver to remove the Two Screws (FIG 6+7) that secure the Headlight.

If Halogen Headlights: Pop each Headlight out and disconnect the 3 Connectors Per Unit (FIG 8).

If LED Headlights: Pop each Headlight out and disconnect the Single Connector (FIG 9).

NOTE - Be very careful when disconnecting the wiring harness from the Headlight. The plastic tabs can be brittle.

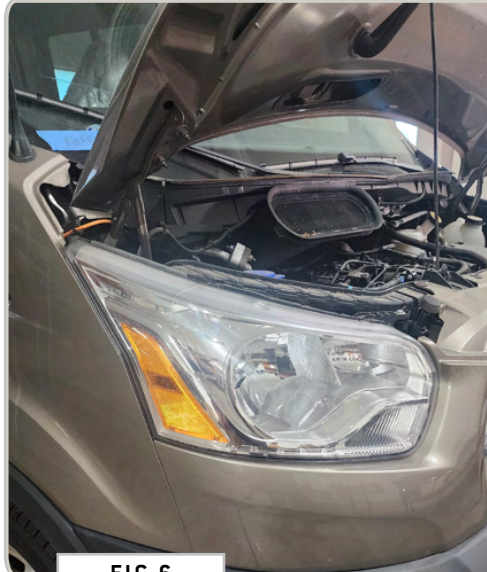


FIG 6

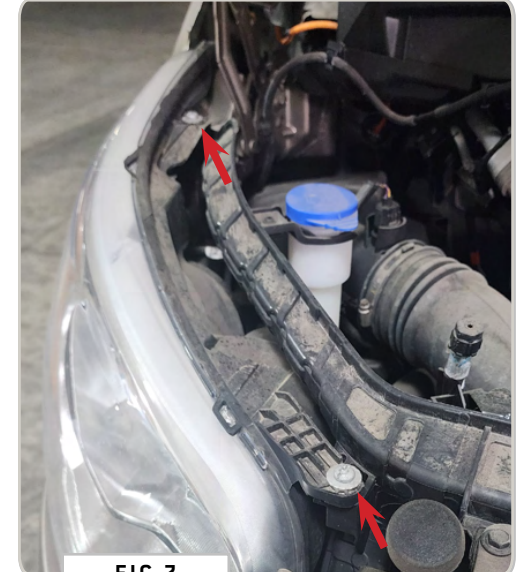


FIG 7



FIG 8

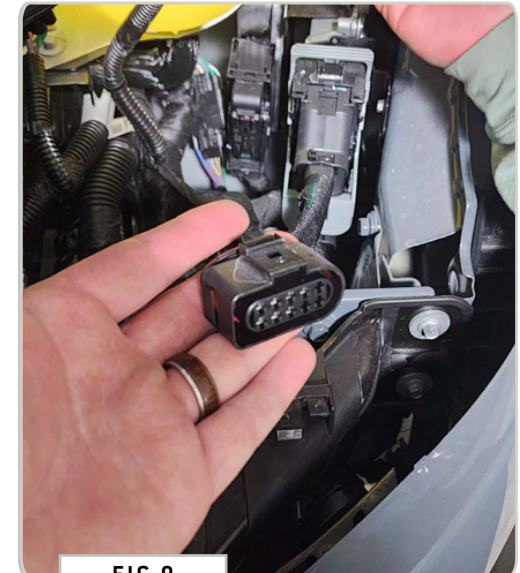


FIG 9

TOOLS REQUIRED FOR THIS STEP: + 13MM DEEP SOCKET
+ 10MM SOCKET

STEP | 01 LAYOUT AND INSTALL PREP

1.4 Remove Lower Driver's Side Factory Hardware:

(1) Flanged Bolt: Using a **13MM Deep Socket**, remove the **Flanged Bolt** shown in FIG 10.

(2) Flanged Hex Head Screws: Using a **10MM Socket**, remove the **Flanged Hex Head Screws** shown in FIG 11+12.

NOTE - There will be a wire that you'll need to unclip circled in FIG 10+11.

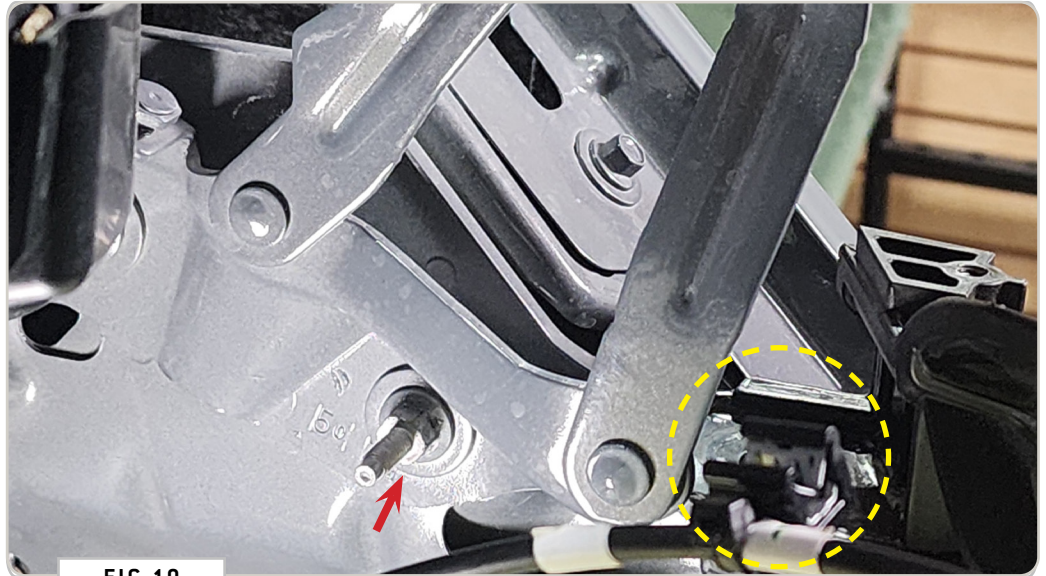


FIG 10



FIG 11



FIG 12

STEP | 02 ASSEMBLE HOOD STRUTS

2.1 Assemble Hood Struts: Connect the **Driver Side Brace Assembly** to the **Driver Side Body Bracket** by threading in the **Ball End** of a **Gas Strut** through the **Body Bracket** and into the **Rivet Nut** pre-installed to the **Brace Assembly** (FIG 13). Repeat for **Passenger Side Assembly** (FIG 14).

TOOLS REQUIRED FOR THIS STEP:

DRIVER SIDE ASSEMBLY

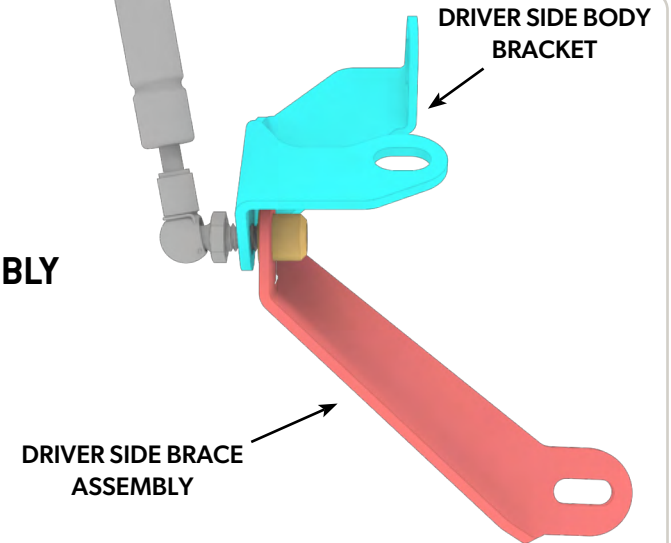


FIG 13

DRIVER SIDE BODY BRACKET

PASS SIDE ASSEMBLY

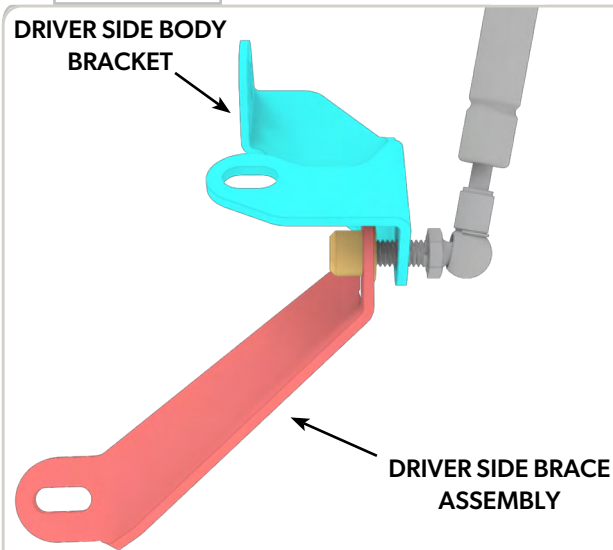


FIG 14

TOOLS REQUIRED FOR THIS STEP: + 13MM DEEP SOCKET
+ 10MM SOCKET

STEP | 03 INSTALL HOOD STRUTS

3.1 Position Driver Side Hood Strut Assembly: Position the **Driver Side Hood Strut Assembly** in the orientation shown in **FIG 16** and line up the mounting holes to the pre-threaded locations of the **Factory Hardware** that was removed previously.

3.2 Secure Driver Side Hood Strut Assembly: Replace the **Flanged Bolt** (**FIG 16**) and the **Two Flanged Hex Head Screws** (**FIG 17-18**) that were removed earlier to secure the **Assembly** to the **Van Body**.

3.3 Repeat for Passenger Side.

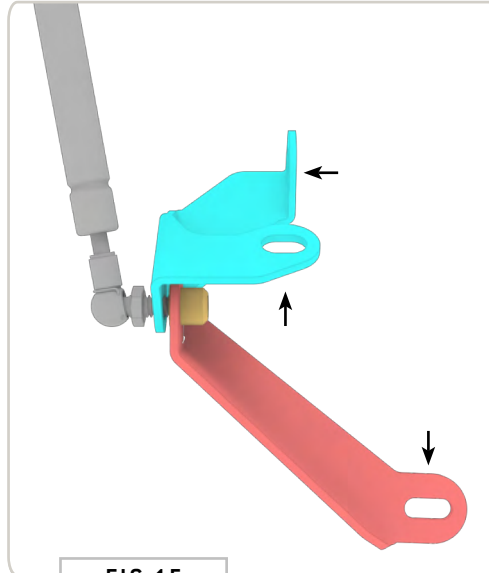


FIG 15



FIG 16



FIG 17



FIG 18

STEP | 03 INSTALL HOOD STRUTS

3.4 Layout Alignment Marks: Use some tape and a marker to layout the marks you'll use to ensure alignment during the next steps of the install (FIG 19). If you draw a straight line from the pre-existing notches in the **Factory Hinge Bracket**, you'll know if the alignment of the **Hood** veers off at any point during the install.

3.5 Remove Factory Upper Flanged Nut: Use a **13MM Wrench** to remove the **Upper Flanged Nut** that secures the **Hood** to the **Factory Hood Hinge** (FIG 20).

3.6 Install Driver Side Hood Bracket: Secure the **Driver Side Hood Bracket** to the **Hood** in the orientation shown in FIG 21 using the hardware removed in the last step.

3.7 Loosen Lower Flanged Nut and Install Hood Bracket: Use a **13MM Wrench** to loosen the **Lower Flanged Nut** that secures the **Hood** to the **Factory Hood Hinge**. Slide the **Hood Bracket** into position around the protruding bolt and resecure the **Lower Flanged Nut** (FIG 22). Repeat for **Passenger Side**.

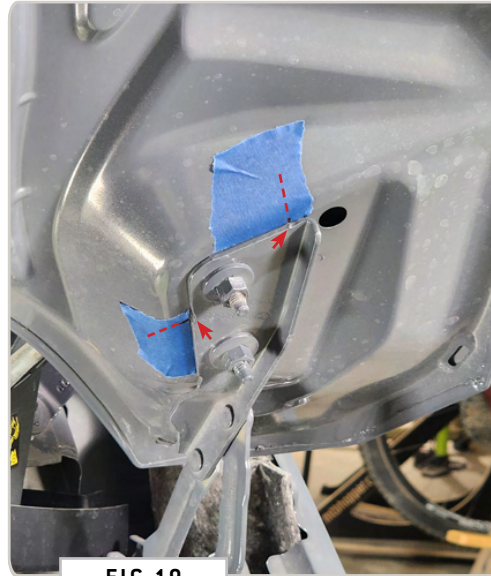


FIG 19



FIG 20



FIG 21



FIG 22

STEP | 03 INSTALL HOOD STRUTS

3.9 Attach Gas Strut to Hood Bracket: Using the supplied **Nuts and Washers**, attach the **Upper Ball End** of the **Gas Struts** to the **Hood Brackets** (FIG 23) with a **12MM** and **13MM Wrench** (FIG 24).

TOOLS REQUIRED FOR THIS STEP: + 12MM WRENCH
+ 13MM WRENCH



FIG 23



FIG 24

TOOLS REQUIRED FOR THIS STEP:

STEP | 04 FINISHING TOUCHES

4.1 Close the Hood: Gently close the hood to ensure smooth operation of the **Gas Struts**.

4.2 Check Hood Spacing: Check the spacing of the **Hood** to the **Van Body**. Adjust as needed by loosening and repositioning the **Hood Brackets**.

4.3 Reopen the Hood: Lift the hood to check if the struts support the hood automatically. Both struts should fully support the hood, making it easy to open and close without the need for manual support.

4.4 Reinstall Headlights and Wiring Clip: Reinstall the **Headlights** using the **T30 Screws** removed earlier and reconnect the **Wiring Clip** from where it was pryed out.



FIG 25

GET OUT AND EXPLORE!

+ LEAVE US A REVIEW

Happy with your new FVC product? We would love to hear (and see) from you! Head to the product page and click "Leave Review." Add a short review and upload a few photos to be showcased on the product page.

+ SHARE YOUR PICS

We love seeing how our customers use their FVC products and following along with your adventures. Tag us in your photos with: @flatlinevanco or send them to us via email. We love posting customer pictures in our feed!

+ NEED ANY HELP?

If you are having any issues with your product, please reach out, and we will make it right. FVC is a company of van and outdoor enthusiasts that design and use our own products, so we want you to be as stoked on your new parts as we are!



@FLATLINEVANCO