



## Installation Guide



### **Safari Rack Drop Front 148 HR TR0109B**

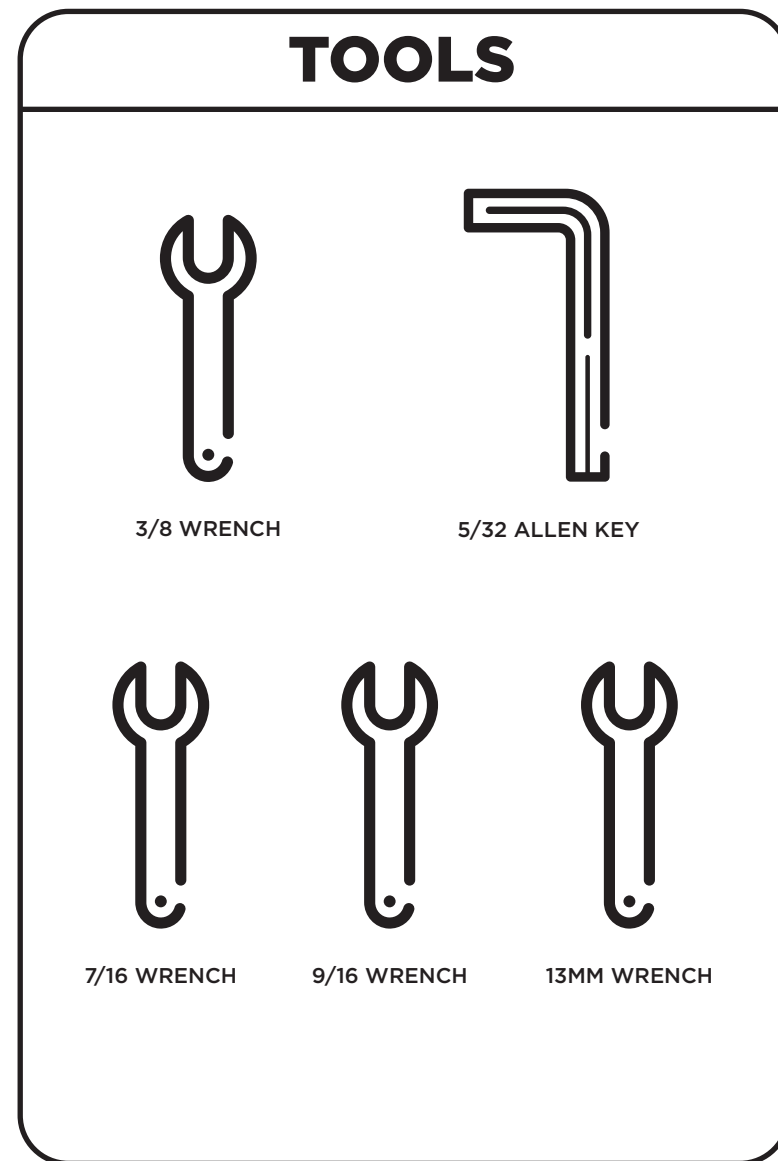
# THANK YOU!

ARE YOU EXCITED ABOUT YOUR NEW SAFARI RACK? HERE ARE A FEW THINGS TO DO BEFORE BEGINNING THE INSTALLATION PROCESS--

- PLEASE INSPECT THE PRODUCT TO ENSURE THERE WAS NO DAMAGE INCURRED DURING SHIPPING.
- IF THERE IS DAMAGE TO REPORT, PLEASE CONTACT OUR CUSTOMER SERVICE DEPARTMENT AS SOON AS POSSIBLE.
- NEXT, USING THE "PACKAGE CONTENTS" PAGE, CHECK INVENTORY AND FAMILIARIZE YOURSELF WITH THE PARTS AND HARDWARE.
- GATHER ALL TOOLS REQUIRED FOR INSTALL.
  - 13MM BOX WRENCH OR SOCKET
  - 3/8 BOX WRENCH OR SOCKET
  - 7/16 BOX WRENCH OR SOCKET
  - 9/16 BOX WRENCH OR SOCKET
  - 5/32 HEX KEY ALLEN WRENCH

ESTIMATED INSTALL TIME- 4 HRS

ADDITIONAL HELP IS SUGGESTED FOR A FEW OF THE INSTALL STEPS.

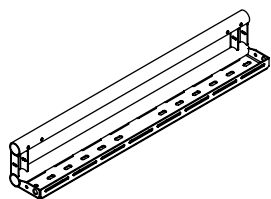


All Flatline Van Co products must be properly assembled and secured before attaching to your vehicle. Improper attachment could result in an automobile accident, and could cause serious bodily injury or death to you or to others involved. You are responsible for assembling and securing Flatline Van Co products to your vehicle, checking the mounting points and attachments prior to use, and regularly inspecting the products for wear and or damage. We always recommend you use a professional to install any aftermarket accessories to your vehicle. If you have no mechanical experience and are not thoroughly familiar with the installation procedures, you must have the product installed by a professional installer or other qualified persons. The responsibility is yours and must be taken seriously for everyone's safety.

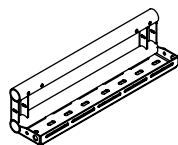


thanks.

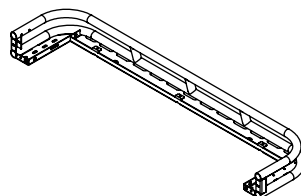
# PACKAGE CONTENTS



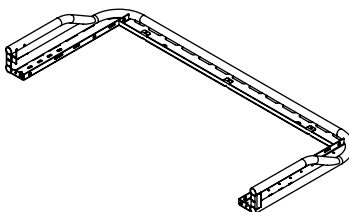
SIDE RAIL WELDMENT (34")  
QTY - 4



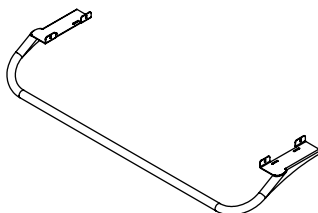
SIDE RAIL WELDMENT (20.5")  
QTY - 2



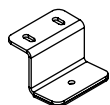
REAR BASKET WELDMENT  
QTY - 1



DROP FRONT WELDMENT  
QTY - 1



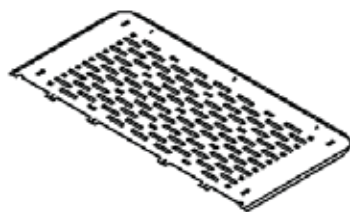
DROP DOWN WELDMENT  
QTY - 1



FOOT BRACKET  
QTY - 8



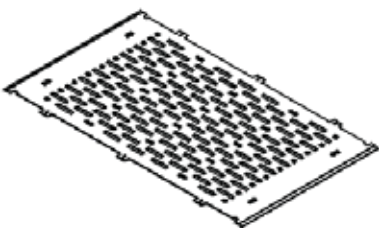
LADDER  
BRACKET  
QTY - 1



FRONT DECK PANEL  
QTY - 1



FAN SIDE DECK PANEL  
QTY - 4



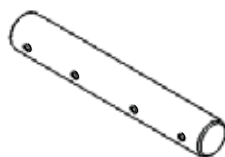
MID SECTION DECK PANEL  
QTY - 1



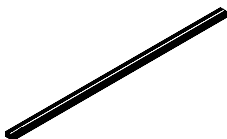
REAR DECK PANEL  
QTY - 1



FAN COVER PANEL  
QTY - 2



BAYONET  
QTY - 8

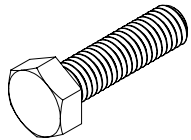


54.5" CROSSBAR  
QTY - 4



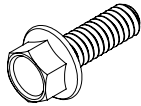
F45 MOUNTING BRACKET  
QTY - 3

# HARDWARE



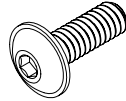
**M8-1.25 X 30 HEX  
HEAD SCREW**

**QTY - 8**



**1/4-20 X 0.75  
FLANGED HEX HEAD  
SCREW**

**QTY - 34**



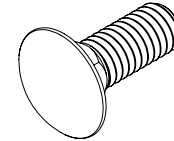
**1/4-20 X 0.75  
FLANGED BUTTON  
HEAD HEX DRIVE  
SCREW**

**QTY - 38**



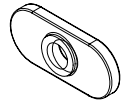
**1/4-20 X 0.5 FLANGED  
BUTTON HEAD HEX  
DRIVE SCREW**

**QTY - 37**



**3/8-16 X 1 SQUARE  
NECK CARRIAGE  
BOLT**

**QTY - 26**



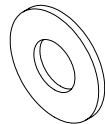
**1/4-20 T-NUT**

**QTY - 37**



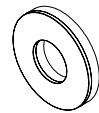
**1/4 SCREW FLAT  
WASHER**

**QTY - 18**



**3/8 SCREW FLAT  
WASHER**

**QTY - 26**



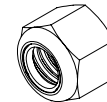
**5/16 SCREW BONDED  
SEALING WASHER**

**QTY - 8**



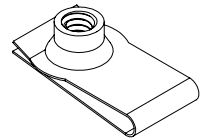
**1/4-20 NYLON INSERT  
LOCKNUT**

**QTY - 18**



**3/8-16 NYLON INSERT  
LOCKNUT**

**QTY - 26**



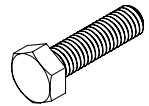
**1/4-20 CLIP NUT**

**QTY - 6**

# FOOT BRACKETS

Mounting the **Foot Brackets** is the first step. You will need to first pry off the access covers on the roof of your van to reveal the access holes. Some vans require some clearance to be made in the access holes due to build tolerance from Ford Factory (shown right). Be sure to use touch up paint on any bare metal to prevent rusting.

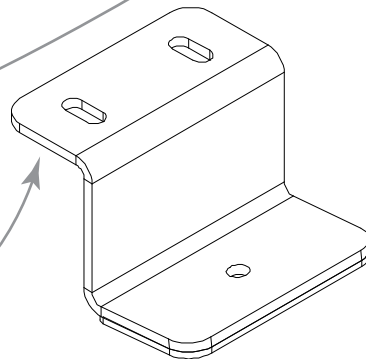
Now you can mount the **Foot Brackets** to the roof. The flange with the single hole and rubber gasket attaches to the van using a **M8-1.25 X 30 Hex Head Screw** and **5/16 Screw Bonded Sealing Washer**. The top flange faces the outside of the van. Make sure the bracket is straight and square before applying sealant. We recommend using **Teroson MS 5510 BK**. Applying the sealant is for peace of mind to ensure a leak free installation. You can also perform this after the Side Rail Assemblies (next step) have been installed if you are concerned about bracket fitment.



M8-1.25 X 30 HEX  
HEAD SCREW



5/16 SCREW BONDED  
SEALING WASHER

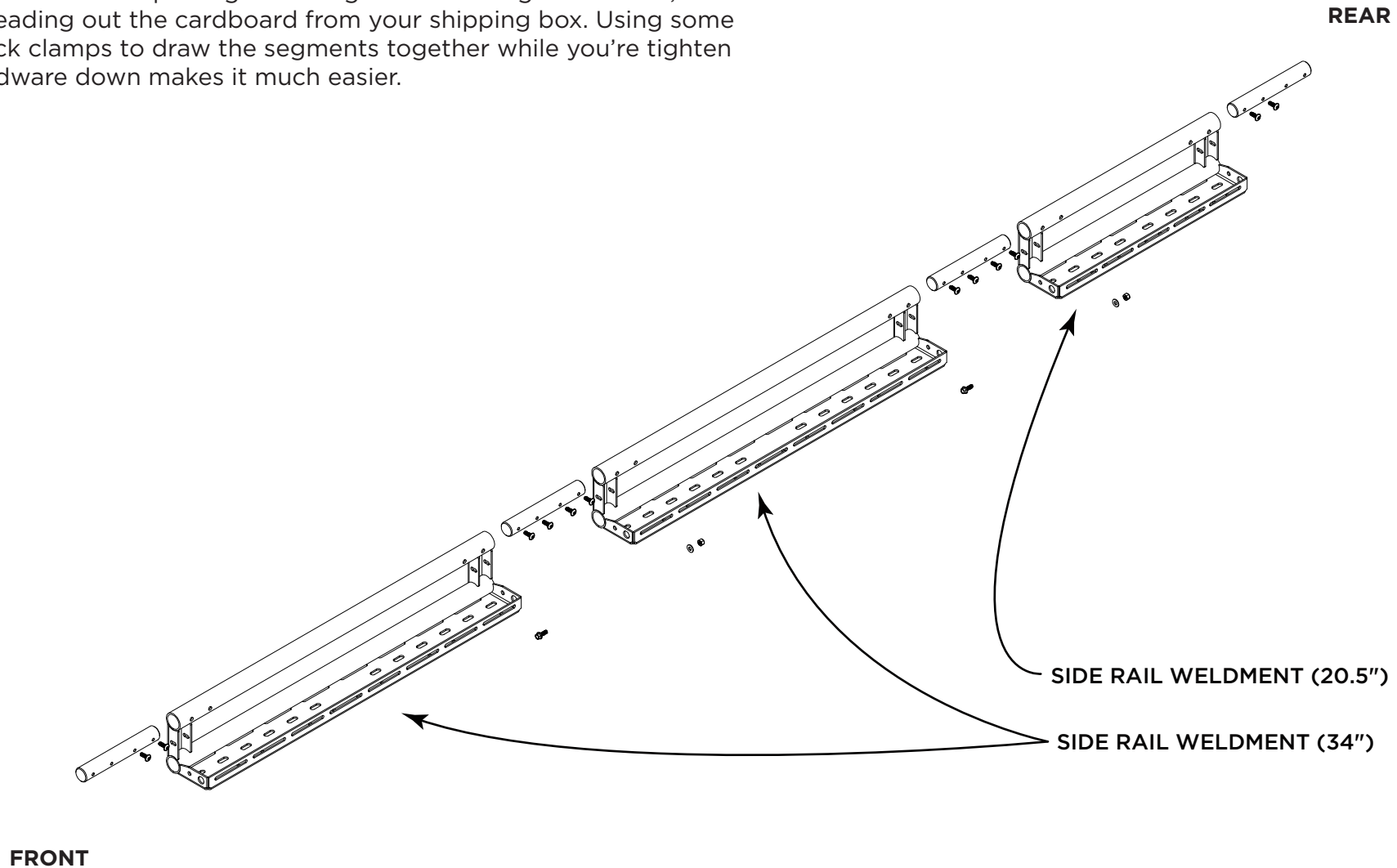


FACES OUTSIDE OF VAN

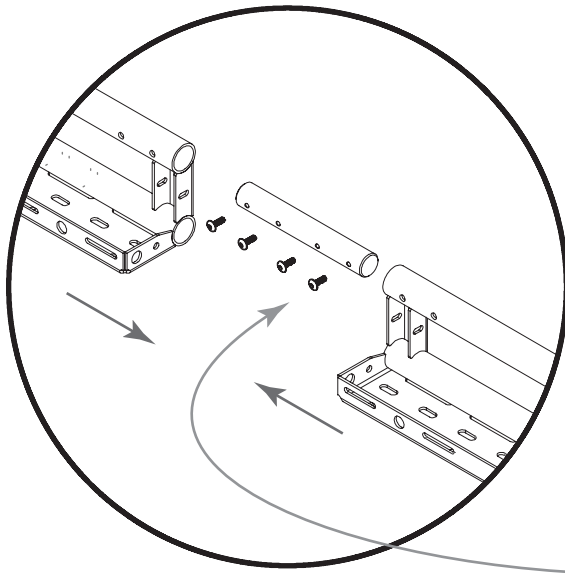
# SIDE RAIL ASSEMBLY

Next you need to put together both Side Rail Assemblies. They are handed Left and Right (mirrors of each other) with a 20.5" Weldment in the Rear, and two (2) 34" Weldments mated together as shown below. Page 7 shows details views and hardware used.

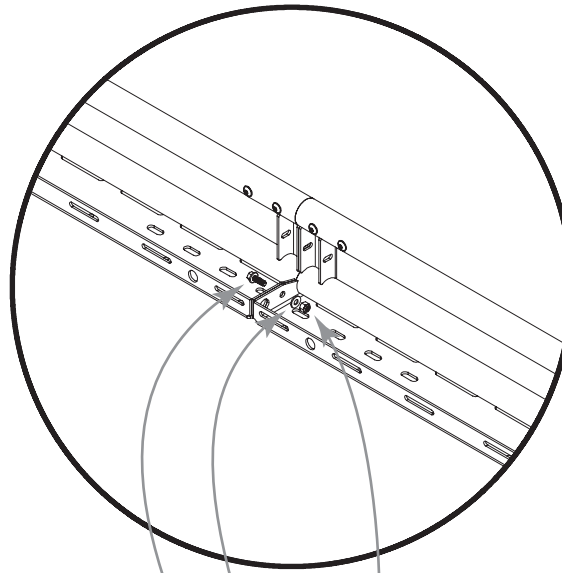
We recommend putting these together on a larger flat table, or spreading out the cardboard from your shipping box. Using some quick clamps to draw the segments together while you're tightening hardware down makes it much easier.



DETAIL A



DETAIL B

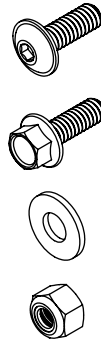


1/4-20 X 0.75 FLANGED BUTTON HEAD  
HEX DRIVE SCREW

1/4-20 X 0.75 FLANGED HEX  
HEAD SCREW

1/4 SCREW FLAT WASHER

1/4-20 NYLON INSERT LOCKNUT



DETAIL D

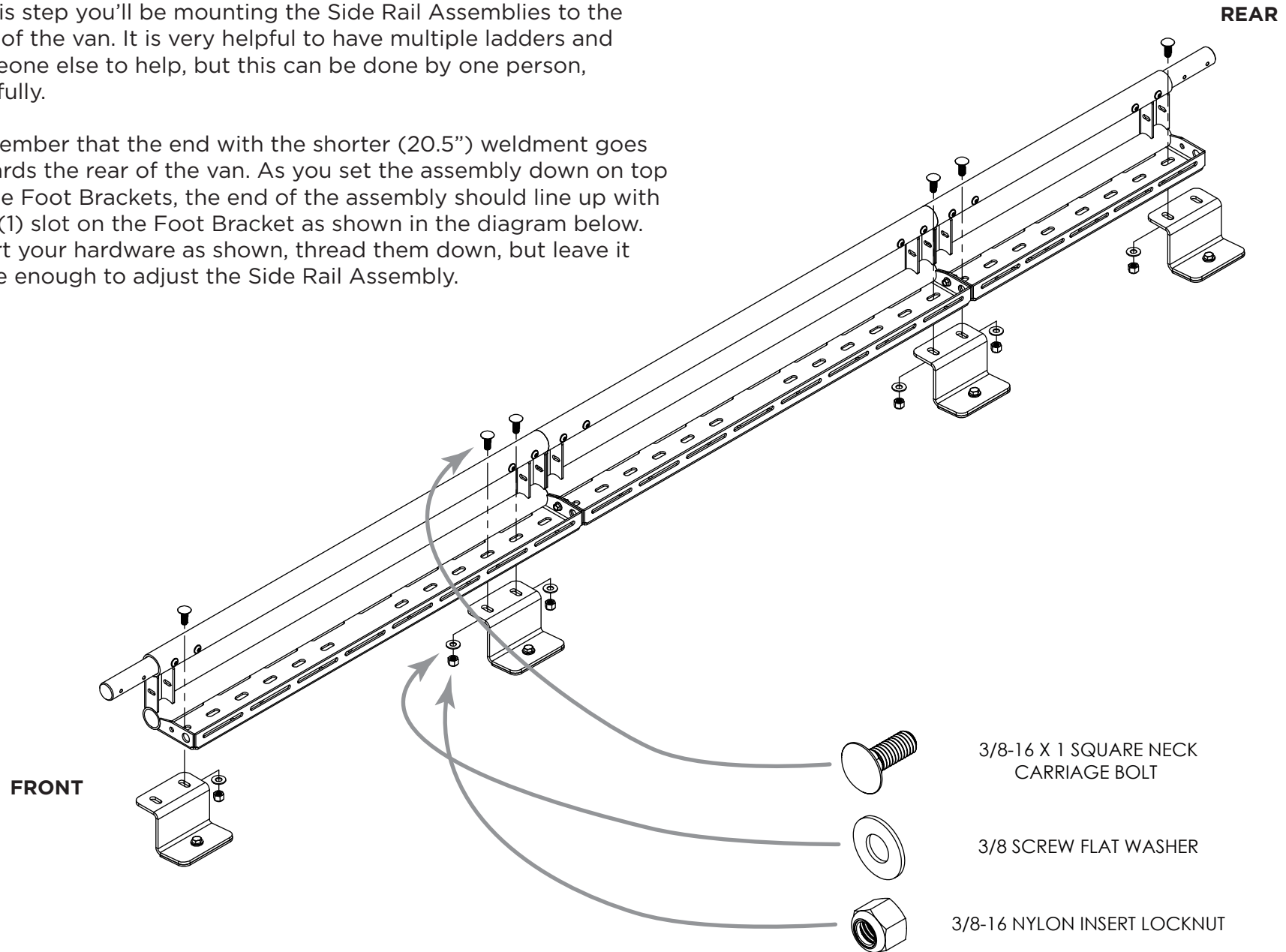




# MOUNTING SIDE RAILS TO ROOF

In this step you'll be mounting the Side Rail Assemblies to the roof of the van. It is very helpful to have multiple ladders and someone else to help, but this can be done by one person, carefully.

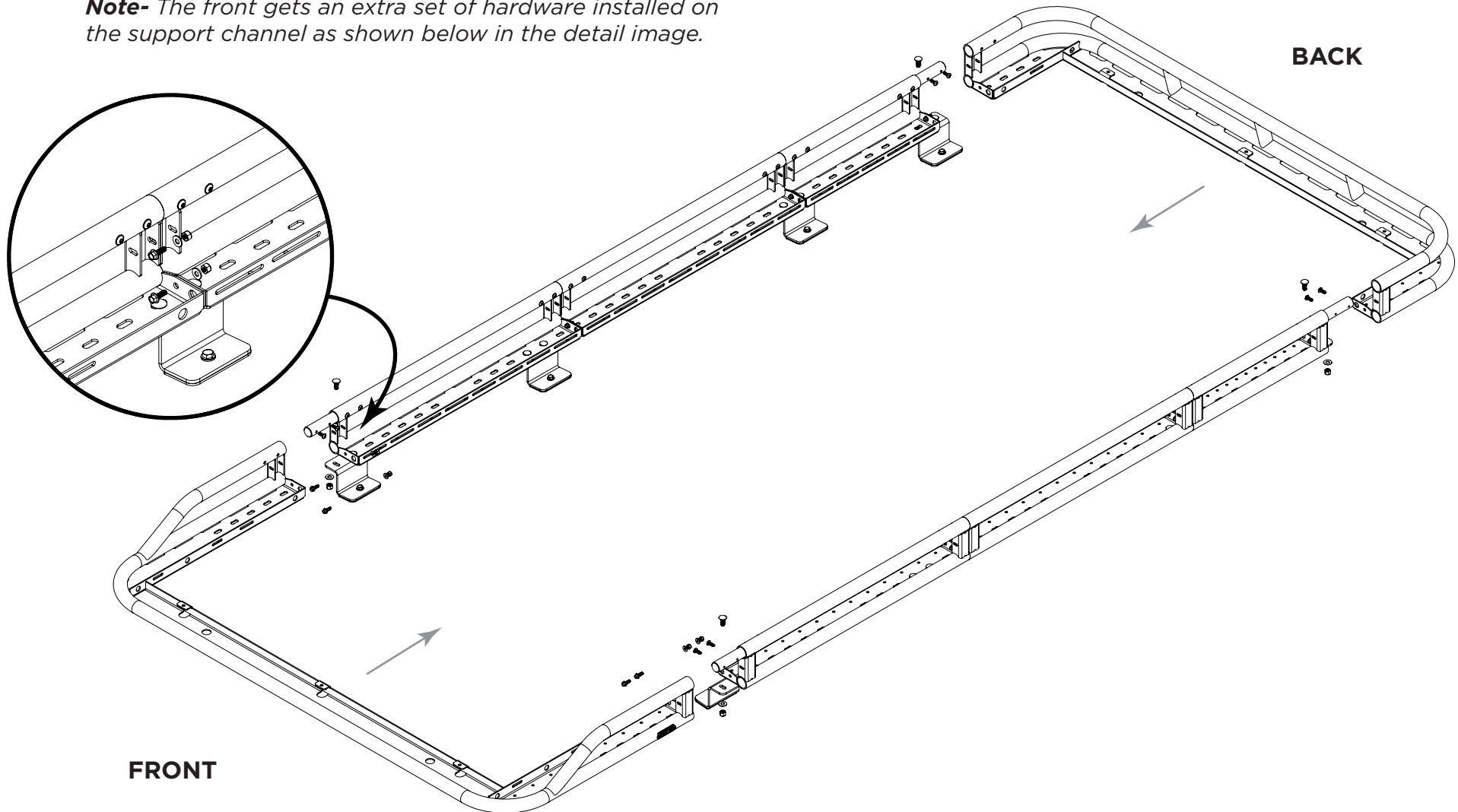
Remember that the end with the shorter (20.5") weldment goes towards the rear of the van. As you set the assembly down on top of the Foot Brackets, the end of the assembly should line up with one (1) slot on the Foot Bracket as shown in the diagram below. Insert your hardware as shown, thread them down, but leave it loose enough to adjust the Side Rail Assembly.



# INSTALLING FRONT AND REAR WELDMENTS

We recommend having a second set of hands to help with this step as well. Start with the **Rear Basket** and slide it onto the exposed bayonets on the rear of the rack. Attach using the same hardware used to assemble the side rails, and use the same clamping method as before to ensure good alignment. Repeat the same steps for the **Drop Front Weldment**, and then on the next page we'll tackle the **Drop Down Weldment**.

**Note-** The front gets an extra set of hardware installed on the support channel as shown below in the detail image.

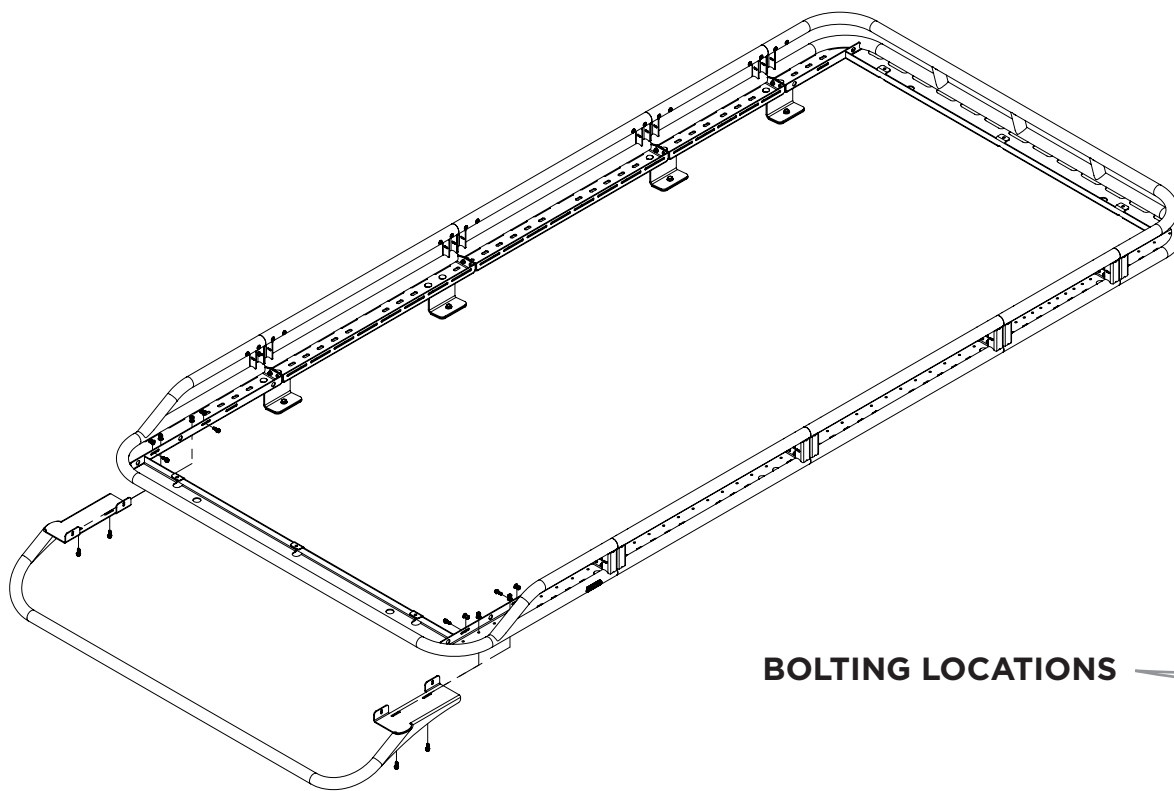


# MOUNTING DROP FRONT

Next we'll get the **Drop Down Weldment** mounted up. The drop down mounts to the underside tray of the **Open Front Weldment**. You will need to maneuver it around your antenna to get it in place, so having a second person helps immensely for this step.

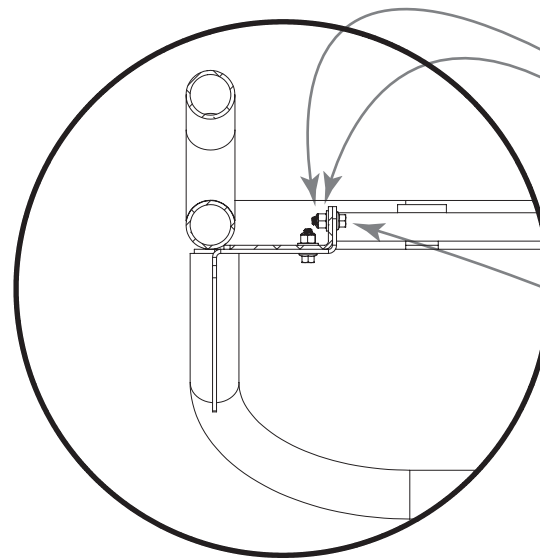
**Detail E & F** display how it fastens to the **Open Front Weldment**.

**Note-** We recommend installing your lighting setup to the **Drop Down Weldment** prior to installing it on the rack. This makes adjustments and placement a bit easier.



**BOLTING LOCATIONS**

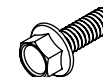
**DETAIL E**



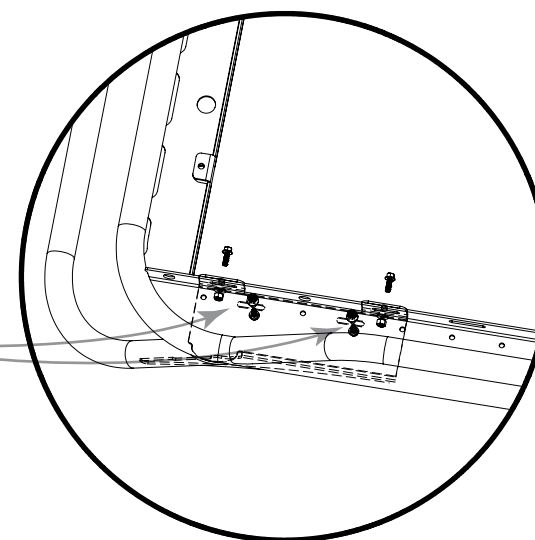
1/4-20 X 0.75 FLANGED HEX  
HEAD SCREW

1/4 SCREW FLAT WASHER

1/4-20 NYLON INSERT LOCKNUT



**DETAIL F**

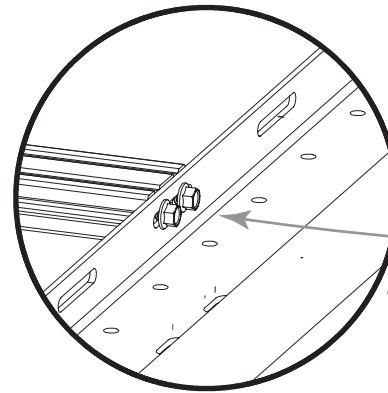


# MOUNTING CROSSBARS

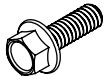
Once you've got both weldment ends tightened; it's time to start laying down your crossbars. We've provided dimensions below to make it easy. Make sure you verify the dimension on both ends of the crossbar relative to the **Reference Point** to ensure they are square. This will make it much easier when mounting your decking panels later. The dimensions are pulled from the flange on the tray of the Rear Basket to the front face of the Crossbar (furthest side) **Wait to tighten the crossbars until you have put all of them in.**

**Note-** It's important to check the dimensions on either side of the crossbar in relation to the rack to ensure that they are square. This will be important when you get to the mounting of Deck Panels.

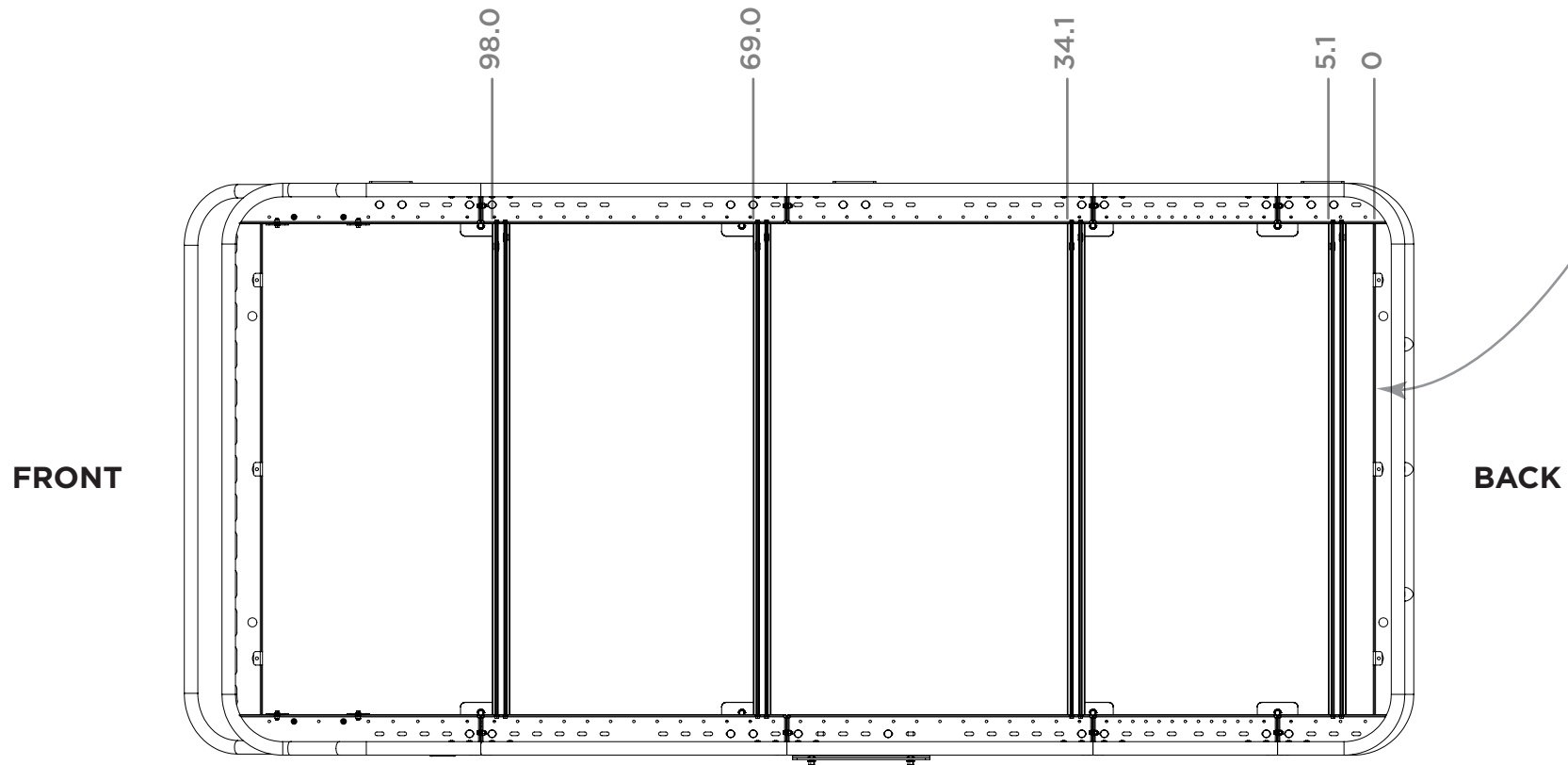
DETAIL G



1/4-20 X 0.75 FLANGED HEX HEAD SCREW



REFERENCE POINT



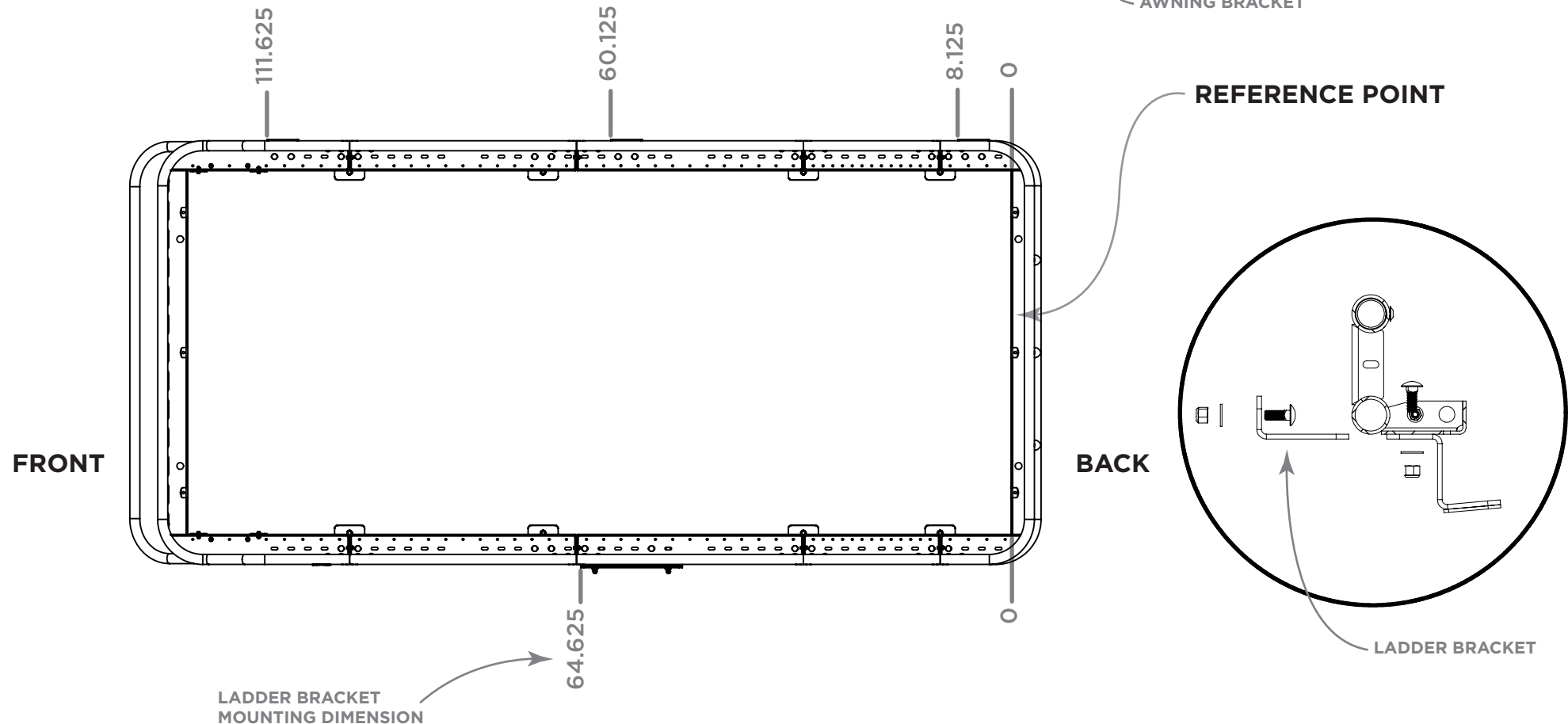
# AWNING MOUNTS

This step is only necessary if you are mounting a Fiamma F45 (or similar) awning to your Safari Rack. If you are not mounting an awning, skip this step.

You will mount the 3 **Awning Brackets** to the underside of the Passenger Side of the rack as shown to the right. The locations are shown below and use the same reference point as the crossbars. These brackets should be tightened once attached to the rack using the same hardware set as the rail mounts.

**Note-** The dimensions given are suggested based on optimal support locations. These may differ if using a smaller or larger awning than typical, and additional mount slots are available to suit your needs.

*The awning brackets have slots for minor adjustment.*

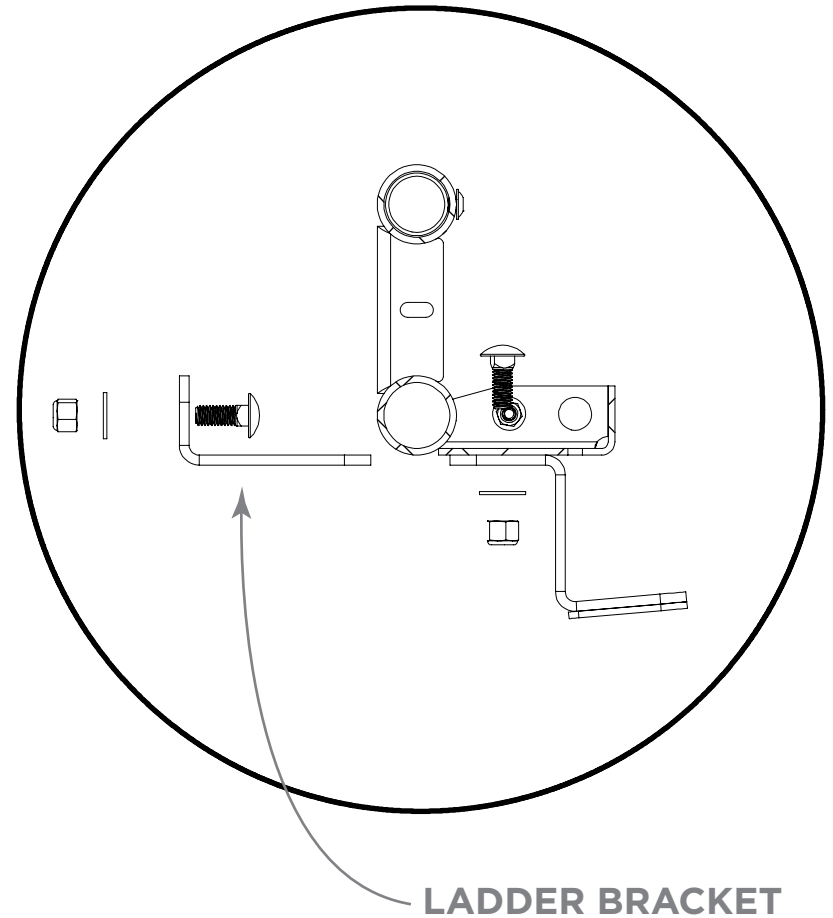
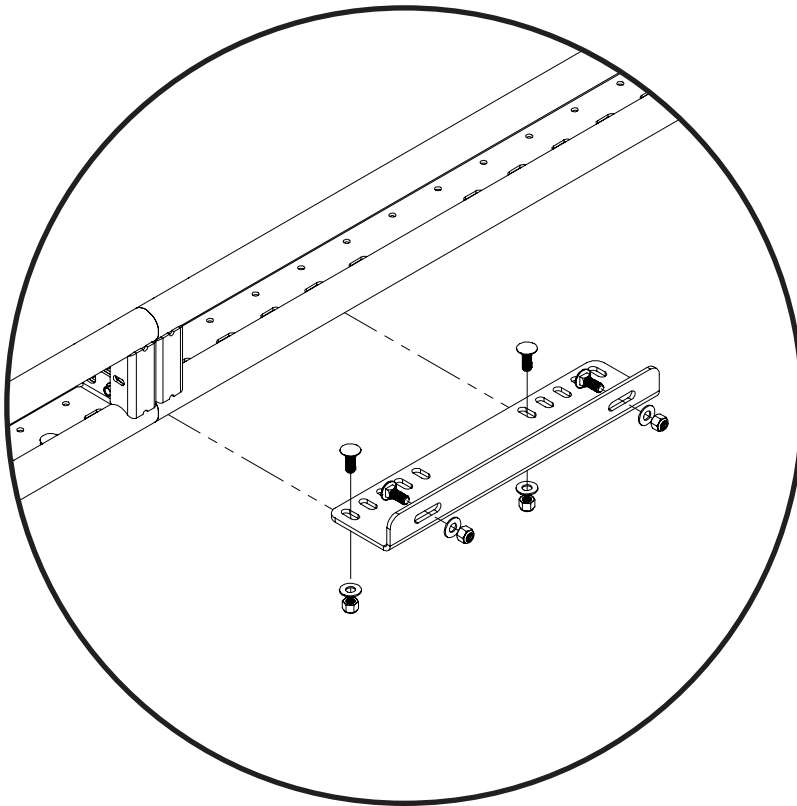


# LADDER BRACKET

Same as the awning brackets; this step is only necessary if you are mounting an FVC Side Ladder to your van. The reference dimension for mounting is shown in the diagram on the previous page.

The Ladder Bracket uses the same hardware as the Awning Mounts, and it attaches in the same way. You want to install the outer carriage bolt into the bracket before attaching to the Safari Rack, otherwise you won't have access when the bracket is in place.

**Note-** *If you haven't purchased your ladder yet, or intend on installing at a different time; you should install the bracket now and attach the hardware. This will save you time later.*



# DECKING PANELS

Before moving onto the floor sections; now is the time to center the rack on your van and tighten the it down to the Foot Brackets. Once you finish that; we can proceed to attaching the floor sections.

Start with the **Rear Decking Panel** first and work your way up. Insert the hardware into the slot on the crossbar as shown in **Detail J**, then align them using your allen key as shown in **Detail M**. **Detail K** shows a section view of how the fasteners attach the end floor sections to the tray of the Basket Weldments where no crossbars are present to attach to. **Figure 6** on the next page shows panel locations.

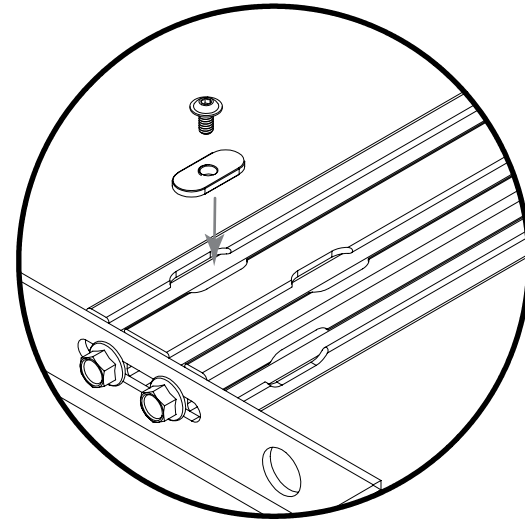
Alignment is key here to achieve a high quality end result, so use your eyes to align the panels straight with the crossbars. The mounting slots have a wide range to account for any misalignment that may have occurred during assembly of the rack.

**Note-** We recommend applying blue loctite (or similar thread locker) to the screws that hold the floor sections down to the crossbars to ensure they do not come loose while driving.

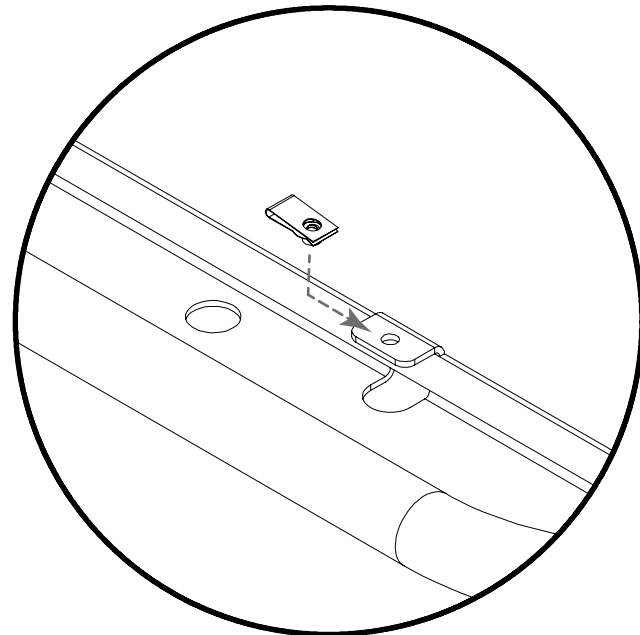
DETAIL M



DETAIL J



DETAIL K



• REAR DECK PANEL

• FAN SIDE DECK PANEL

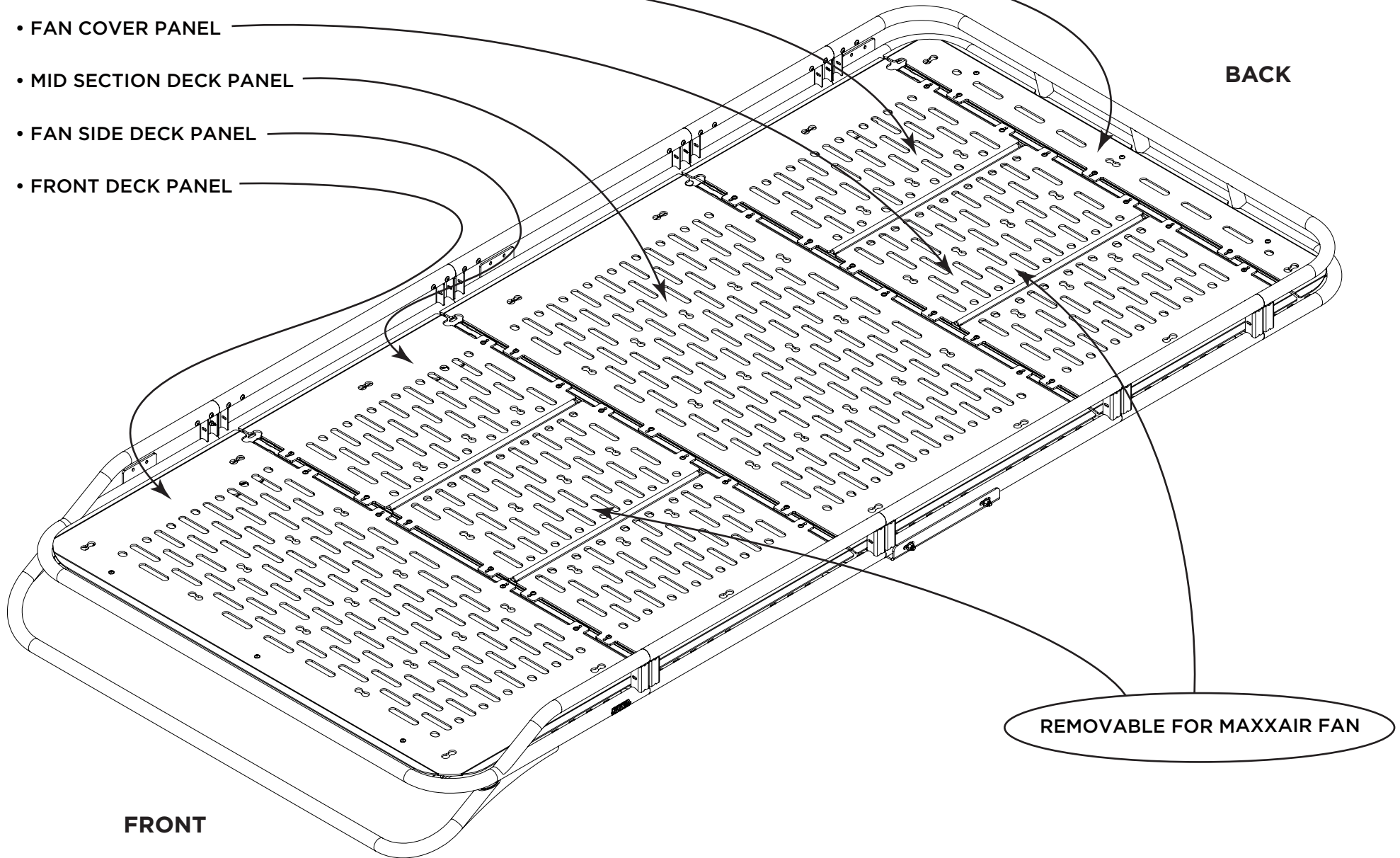
• FAN COVER PANEL

• MID SECTION DECK PANEL

• FAN SIDE DECK PANEL

• FRONT DECK PANEL

**BACK**



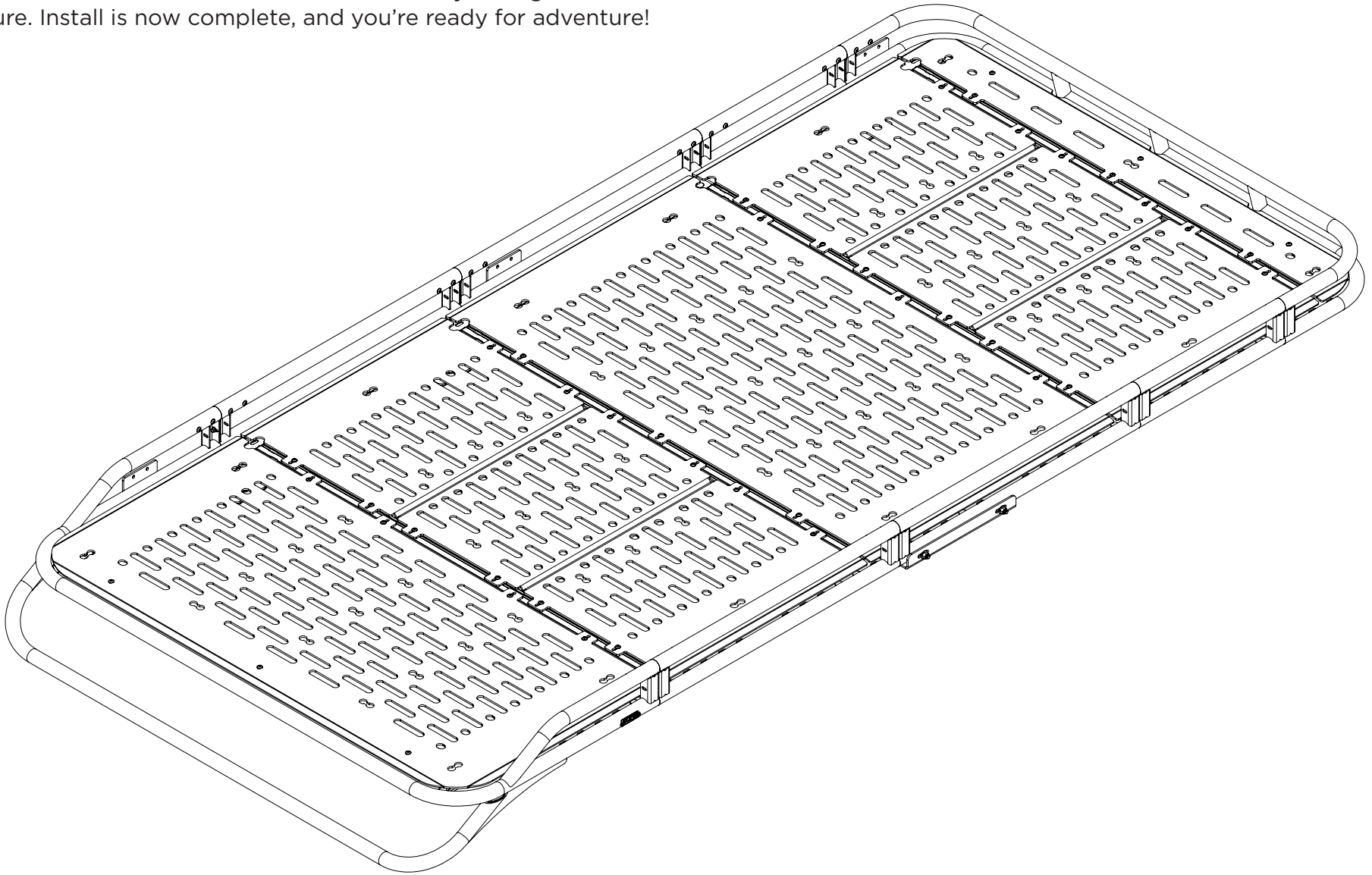
**FRONT**

REMOVABLE FOR MAXXAIR FAN



# COMPLETE!

Once you've got all of the Deck Panels bolted down, do a once over of all fasteners on the rack to ensure they are tight and secure. Install is now complete, and you're ready for adventure!



# GET OUT AND EXPLORE!

## LEAVE US A REVIEW

Happy with your new FVC product? We would love to hear (and see) from you! Head to the product page and click "Leave Review." Add a short review and upload a few photos to be showcased on the product page.

## SHARE YOUR PHOTOS WITH US

We love seeing how our customers use their FVC products and following along with your adventures. Tag us in your photos with @flatlinevanco or send them to us via email. We love posting customer pictures in our feed!

## CUSTOMER SUPPORT

If you are having any issues with your product, please reach out, and we will make it right. FVC is a company of van and outdoor enthusiasts that design and use our own products, so we want you to be as stoked on your new parts as we are!



**@flatlinevanco**



**facebook.com/flatlinevanco**



**youtube.com/c/flatlinevanco**



**support@flatlinevanco.com**



**thanks!**