



# INSTALLATION GUIDE

## SPRINTER FRAME RAIL SUPPORT BRACKETS

SP1158B



### TOOLS REQUIRED (NOT INCLUDED)

- + POWER DRILL
- + 1/2" DRILL BIT
- + RUST PREVENTATIVE PAINT
- + 15MM SOCKET

### INSTALL INFO

TIME TO INSTALL THIS PRODUCT: 30 MINUTES

### BEFORE YOU START

Please inspect the product and packaging upon delivery to ensure there are no issues and that all parts and hardware are accounted for.

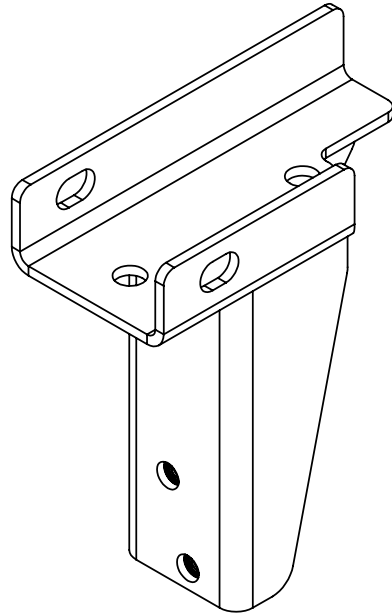
Contact us ASAP if anything is missing at:  
[support@flatlinevanco.com](mailto:support@flatlinevanco.com)

# BEFORE YOU START

All Flatline Van Co products must be properly assembled and secured before attaching to your vehicle. Improper attachment could result in an automobile accident, and could cause serious bodily injury or death to you or to others involved. You are responsible for assembling and securing Flatline Van Co products to your vehicle, checking the mounting points and attachments prior to use, and regularly inspecting the products for wear and or damage. We always recommend you use a professional to install any aftermarket accessories to your vehicle. If you have no mechanical experience and are not thoroughly familiar with the installation procedures, you must have the product installed by a professional installer or other qualified persons. The responsibility is yours and must be taken seriously for everyone's safety.

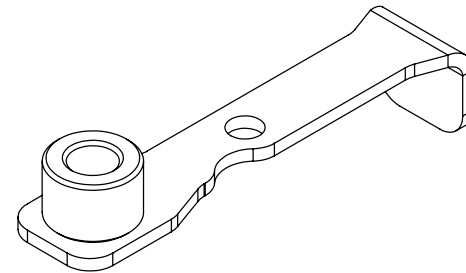


# PACKAGE CONTENTS



FRAME RAIL SUPPORT BRACKET

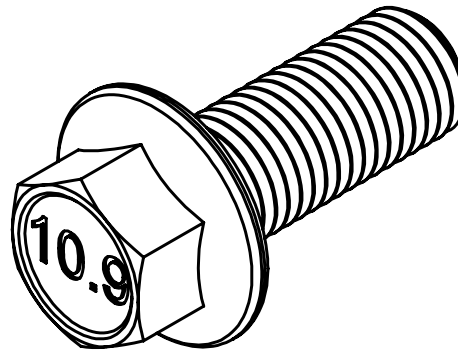
QTY: 2



FLAG NUT WELDMENT

QTY: 2

# HARDWARE



M12-1.5 X 30 FLANGED HEX HEAD  
SCREW

QTY: 4

TOOLS REQUIRED FOR THIS STEP:

## STEP | 01 LAYOUT AND INSTALL PREP

**1.1 Locate Threaded Inserts:** Find the two factory threaded inserts in each of the Sprinter frame rails below the front end of the van (FIG 1).

**1.2 Inspect Hardware Points:** Check the condition of the inserts and clean them if necessary to ensure smooth bolt threading.

**NOTE -** You can use an **M12 x 1.5 Tap** with **Cutting Oil** to clean up the factory threads (FIG 2).

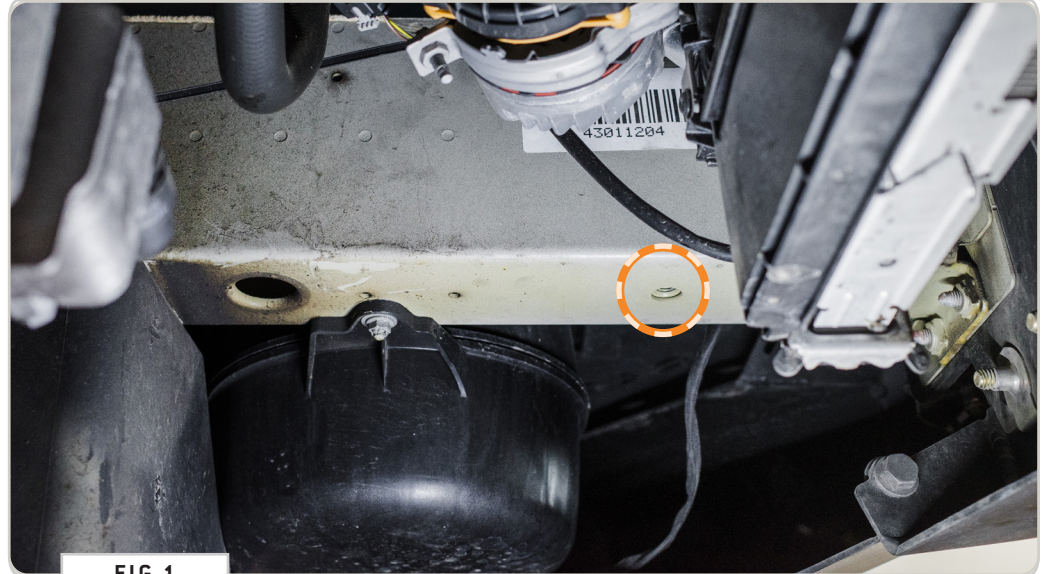
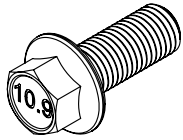


FIG 1



FIG 2

**HARDWARE:**



**TOOLS REQUIRED FOR THIS STEP:** + 15MM WRENCH OR SOCKET

## STEP | 02 INSTALL FRAME SUPPORTS

**2.1 Align the Bracket:** Place either the **Driver or Passenger Frame Supports** against the frame rail, line up the front mounting hole of the bracket with the threaded insert and secure using the supplied **M12 Screws**.

**2.2 Mark Drill Location:** With the bracket secured, mark the position of the rear mounting hole.

**NOTE -** You may have a pre-existing hole in this location. If so, simply proceed to the next step **(FIG 4)**.



FIG 3



FIG 4

TOOLS REQUIRED FOR THIS STEP: + POWER DRILL  
+ RUST PREVENTATIVE PAINT

## STEP | 02 INSTALL FRAME SUPPORTS

**2.3 Drill Rear Mounting Hole:** Remove the bracket and use a 1/2" drill bit to drill out the marked rear hole location (FIG 5).

**NOTE** - *If your van already had a hole in this location, the hole may be expanded a bit more to clear the mounting hardware.*

**2.4 Apply Corrosion Protection:** Paint the newly drilled hole with a rust preventative paint (FIG 6).

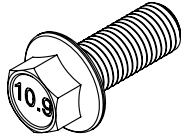


FIG 5



FIG 6

HARDWARE:



TOOLS REQUIRED FOR THIS STEP: + 15MM SOCKET

## STEP | 02 INSTALL FRAME SUPPORTS

**2.5 Secure Front Bolt:** Re-align the bracket on the frame rail and install the front screw using a 15mm socket (FIG 7).

**NOTE** - Ensure you apply threadlocker to the screw before final installation.

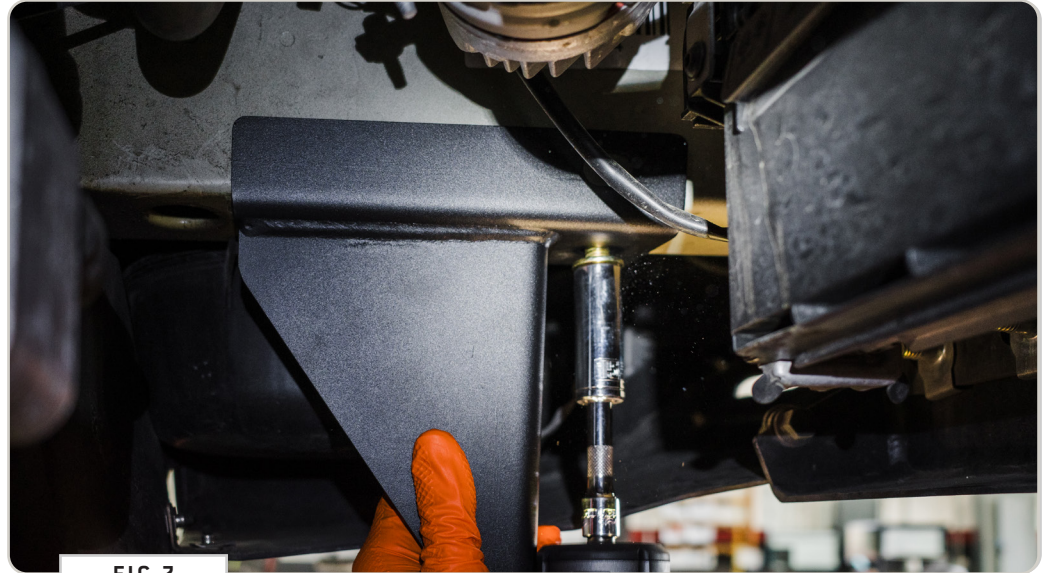
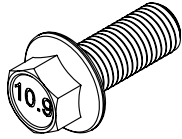


FIG 7



FIG 8

HARDWARE:



TOOLS REQUIRED FOR THIS STEP: + 15MM SOCKET

## STEP | 02 INSTALL FRAME SUPPORTS

**2.6 Position Flag Nut:** Insert the flag nut into the large access hole behind the bracket and align it with the newly drilled rear hole (FIG 9).

**2.7 Install Rear Screw:** Thread the second screw through the bracket and the drilled hole into the flag nut using threadlocker (FIG 10).

**2.8 Repeat Process:** Repeat this process on the other side of the vehicle.



FIG 9

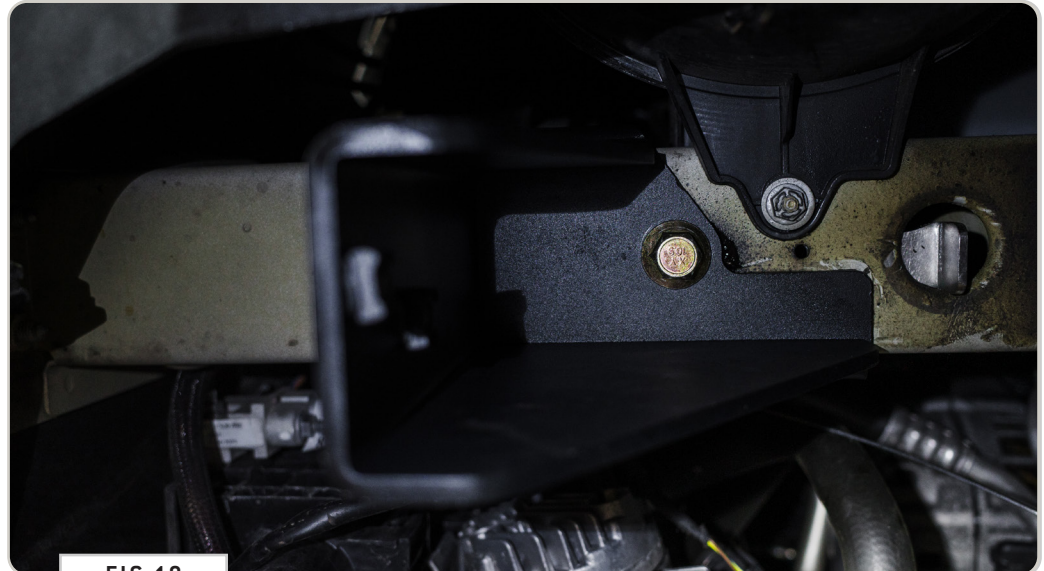


FIG 10

# GET OUT AND EXPLORE!

## + LEAVE US A REVIEW

---

Happy with your new FVC product? We would love to hear (and see) from you! Head to the product page and click "Leave Review." Add a short review and upload a few photos to be showcased on the product page.

## + SHARE YOUR PICS

---

We love seeing how our customers use their FVC products and following along with your adventures. Tag us in your photos with: @flatlinevanco or send them to us via email. We love posting customer pictures in our feed!

## + NEED ANY HELP?

---

If you are having any issues with your product, please reach out, and we will make it right. FVC is a company of van and outdoor enthusiasts that design and use our own products, so we want you to be as stoked on your new parts as we are!



@FLATLINEVANCO