



# INSTALLATION GUIDE

## SPRINTER VAN SIDE STEPS - WINNEBAGO REVEL SP1120B



### TOOLS REQUIRED (NOT INCLUDED)

- + 9/16" DEEP WELL SOCKET OR WRENCH
- + LOCTITE
- + 5/32" ALLEN WRENCH

### INSTALL INFO

TIME TO INSTALL THIS PRODUCT: 1 HOUR

Additional help is suggested for a few of the install steps.

### BEFORE YOU START

Please inspect the product and packaging upon delivery to ensure there are no issues and that all parts and hardware are accounted for.

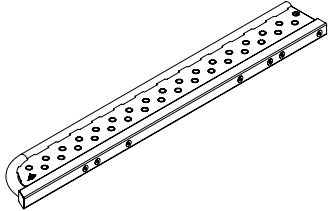
Contact us ASAP if anything is missing at:  
[support@flatlinevanco.com](mailto:support@flatlinevanco.com)

# BEFORE YOU START

All Flatline Van Co products must be properly assembled and secured before attaching to your vehicle. Improper attachment could result in an automobile accident, and could cause serious bodily injury or death to you or to others involved. You are responsible for assembling and securing Flatline Van Co products to your vehicle, checking the mounting points and attachments prior to use, and regularly inspecting the products for wear and or damage. We always recommend you use a professional to install any aftermarket accessories to your vehicle. If you have no mechanical experience and are not thoroughly familiar with the installation procedures, you must have the product installed by a professional installer or other qualified persons. The responsibility is yours and must be taken seriously for everyone's safety.

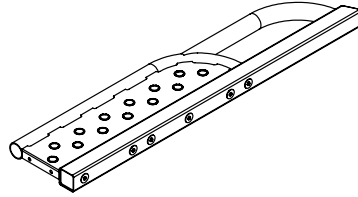


# PACKAGE CONTENTS



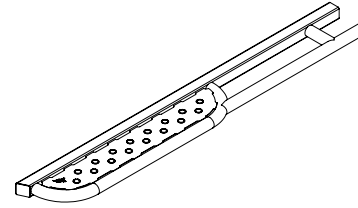
PASSENGER STEP  
WELDMENT - FRONT

QTY: 1



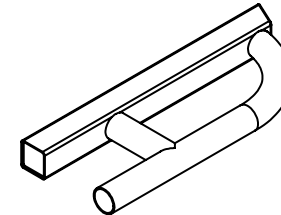
PASSENGER STEP  
WELDMENT - REAR

QTY: 1



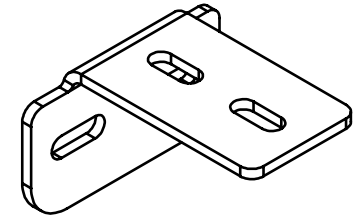
DRIVER STEP WELDMENT -  
FRONT

QTY: 1



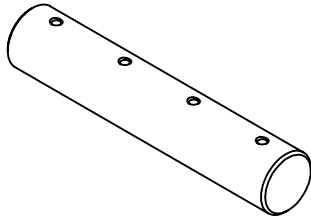
DRIVER STEP WELDMENT -  
REAR

QTY: 1



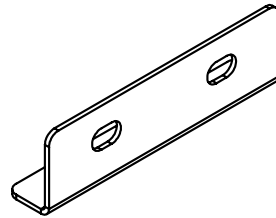
LEVEL SIDE STEP BRACKET

QTY: 1



BAYONET

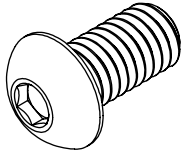
QTY: 2



JOINING BRACKET

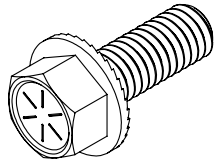
QTY: 2

# HARDWARE



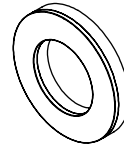
3/8-16 x 0.75 BUTTON  
HEAD HEX DRIVE SCREW

QTY: 20



3/8 x 1 SERRATED FLANGED  
HEX HEAD SCREW

QTY: 30



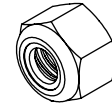
3/8 BONDED SEALING  
WASHER

QTY: 20



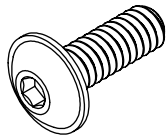
1/4 FLAT WASHER

QTY: 2



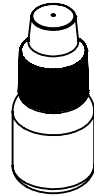
1/4 NYLON LOCKNUT

QTY: 2



1/4-20 x 0.75 FLANGED  
BUTTON HEAD HEX SCREW

QTY: 10



THREADLOCKER

QTY: 1

# INSTALL

## STEP | 01 LAYOUT AND INSTALL PREP

**1.1 Layout Steps:** To begin your install, locate the **Front and Rear Weldments** of the side steps and lay them down carefully as shown in **FIG 1**.

**1.2 Bayonet Assembly:** Slide a **Bayonet** into the tubing of the Front Passenger Weldment until the first two holes of the Bayonet line up with the holes of the tubing. Apply blue Loctite to two **1/4-20x0.75 Button Hex Drive Screws** and loosely thread them in to the Bayonet to hold it in place (**FIG 2**).

**1.3 Step Assembly:** Slide the **Rear Passenger Weldment** onto the protruding end of the bayonet and loosely thread on two more **1/4-20 Screws** with Loctite (**FIG 3**).

**1.4 Secure Step Assembly:** Retrieve a **Joining Bracket** and place the short side along the bottom of the step directly across from the Bayonet. Line up the two holes of the bracket with the two holes of the square tubing and obtain two **3/8-16x1 Serrated Flanged Hex Head Screws**, applying Loctite before loosely threading them into place (**FIG 4+5**).

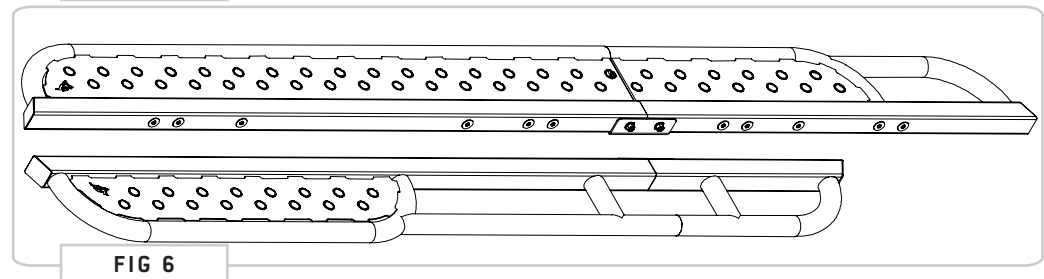
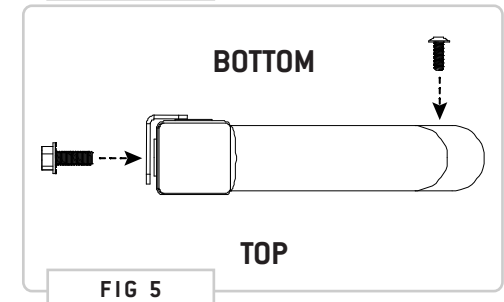
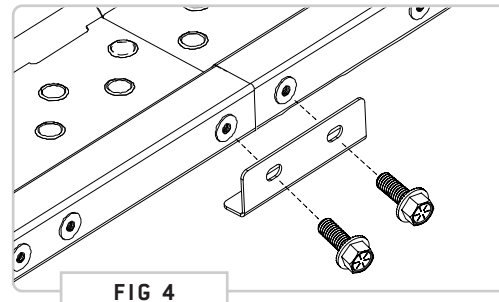
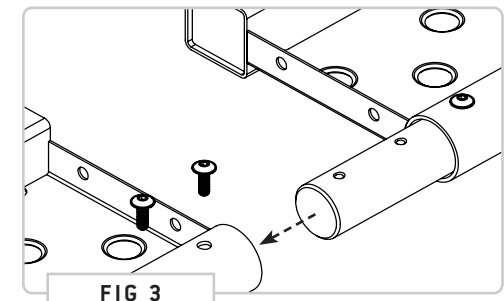
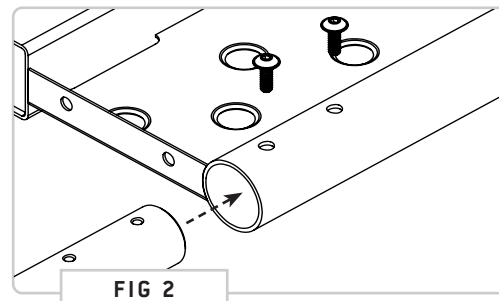
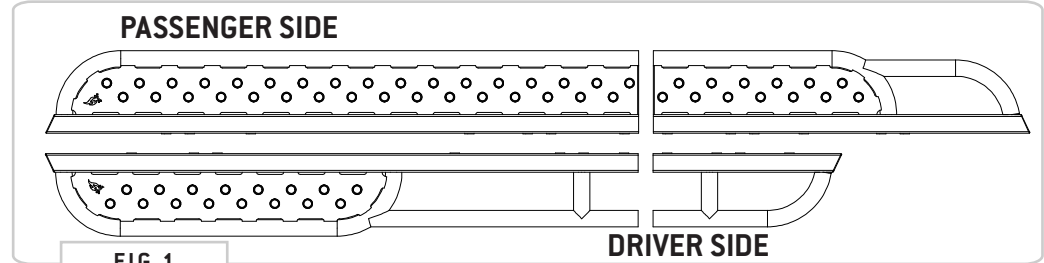
**1.5 Step Assembly Alignment:** Check the alignment of all the joined parts and tighten the hardware down using a **5/32" Allen Wrench** and **9/16" Socket** respectively.

**1.6 Repeat Process:** Repeat this process for the Driver's Side Step Assembly.

**NOTE** - The **Joining Bracket** is used to help with alignment of the two weldments and can be clamped in place while tightening to ensure alignment.

**TOOLS REQUIRED FOR THIS STEP:**

- + 5/32" ALLEN WRENCH
- + 9/16" SOCKET
- + RATCHET
- + LOCTITE



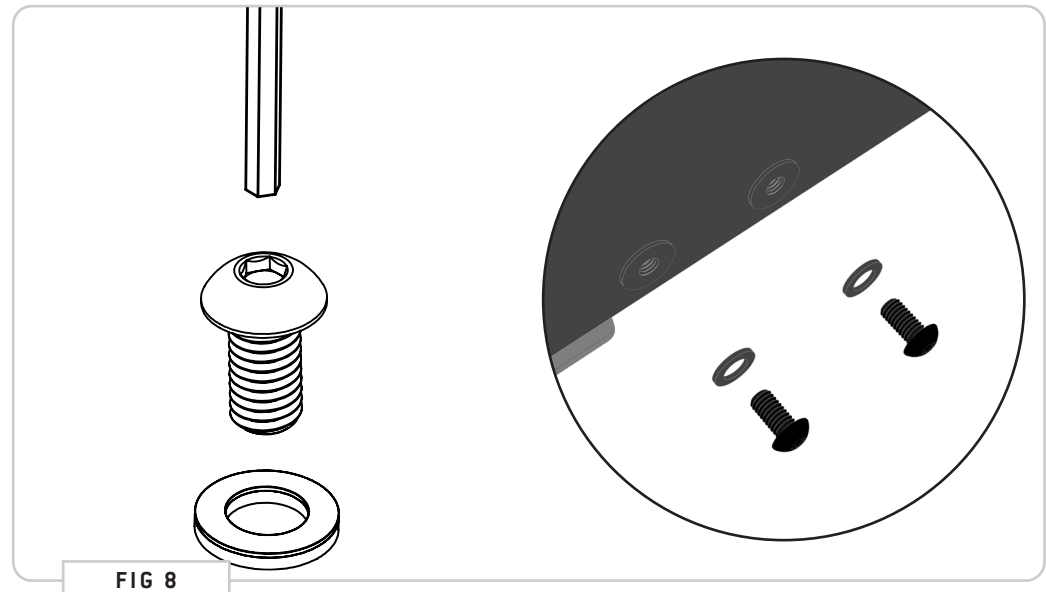
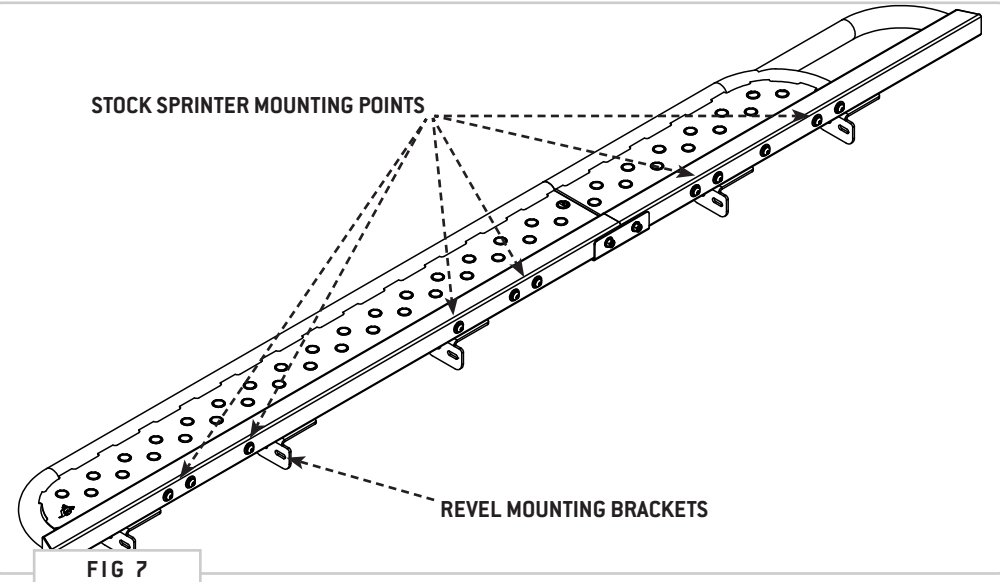
TOOLS REQUIRED FOR THIS STEP: + 7/32" ALLEN WRENCH

## STEP | 02 SEALING WELDMENTS

**2.1 Identify Mounting Points:** Notice the holes tapped into the side of the steps. These are for stock Sprinter Vans and will need to be plugged using **3/8-16x0.75 Button Head Hex Drive Screws** and **3/8 Bonded Sealing Washers** in order to protect them from the elements. **FIG 7** depicts the locations for the Passenger Side Weldment.

**2.2 Plug Alternative Mounting Points:** Affix a **Bonded Sealing Washer** to the screw and apply **Loctite** to the threads before tightening it down into the weldment with a **7/32" Allen Key**. The screw should be turned to the point where the conical sealing washer flattens and the black rubber is set tight against the weldment.

**2.3 Repeat On Other Side:** Repeat this process for the Driver's Side Weldment.



TOOLS REQUIRED FOR THIS STEP: + 9/16" SOCKET OR WRENCH

## STEP | 03 FACTORY BRACKET INSTALL

**3.1 Side Step Bracket Install:** Attach the provided brackets to the existing Revel brackets in the orientation shown in **FIG 9 + 10** on your van using the Factory Carriage bolts, Washers and Nylock nuts. Leave them slightly loose for adjustment later.

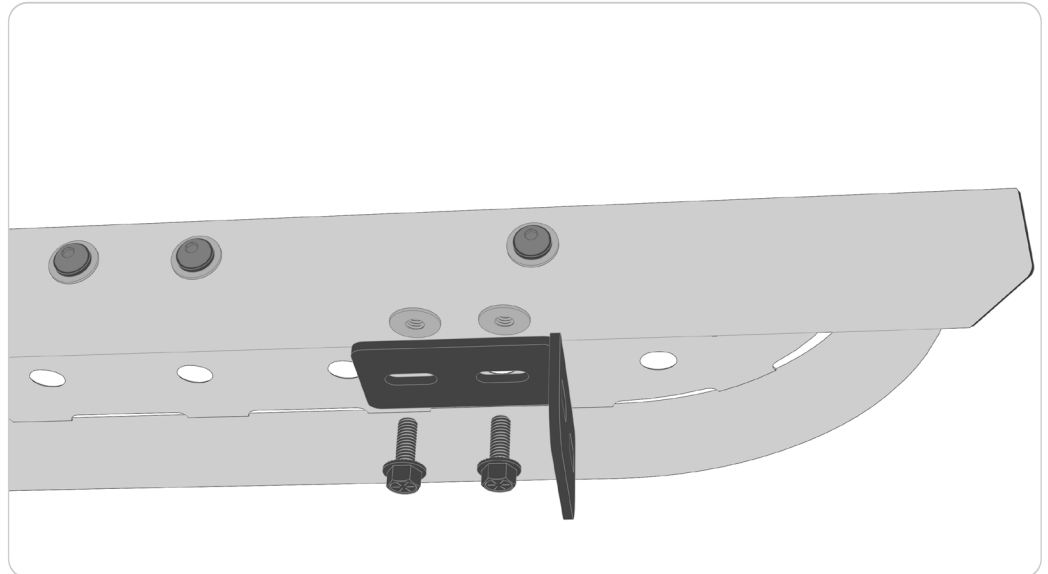


TOOLS REQUIRED FOR THIS STEP: + 9/16" SOCKET OR WRENCH

## STEP | 04 ATTACH STEPS TO VAN

**4.1 Position Step Assemblies:** Position the side steps onto the van, ensuring alignment with the brackets (FIG 11).

**4.2 Secure Steps to Brackets:** Start bolting the side steps onto the van using the provided **3/8-16 Flanged Hex Bolts and Loctite (FIG 12)**, making sure to tighten them securely.



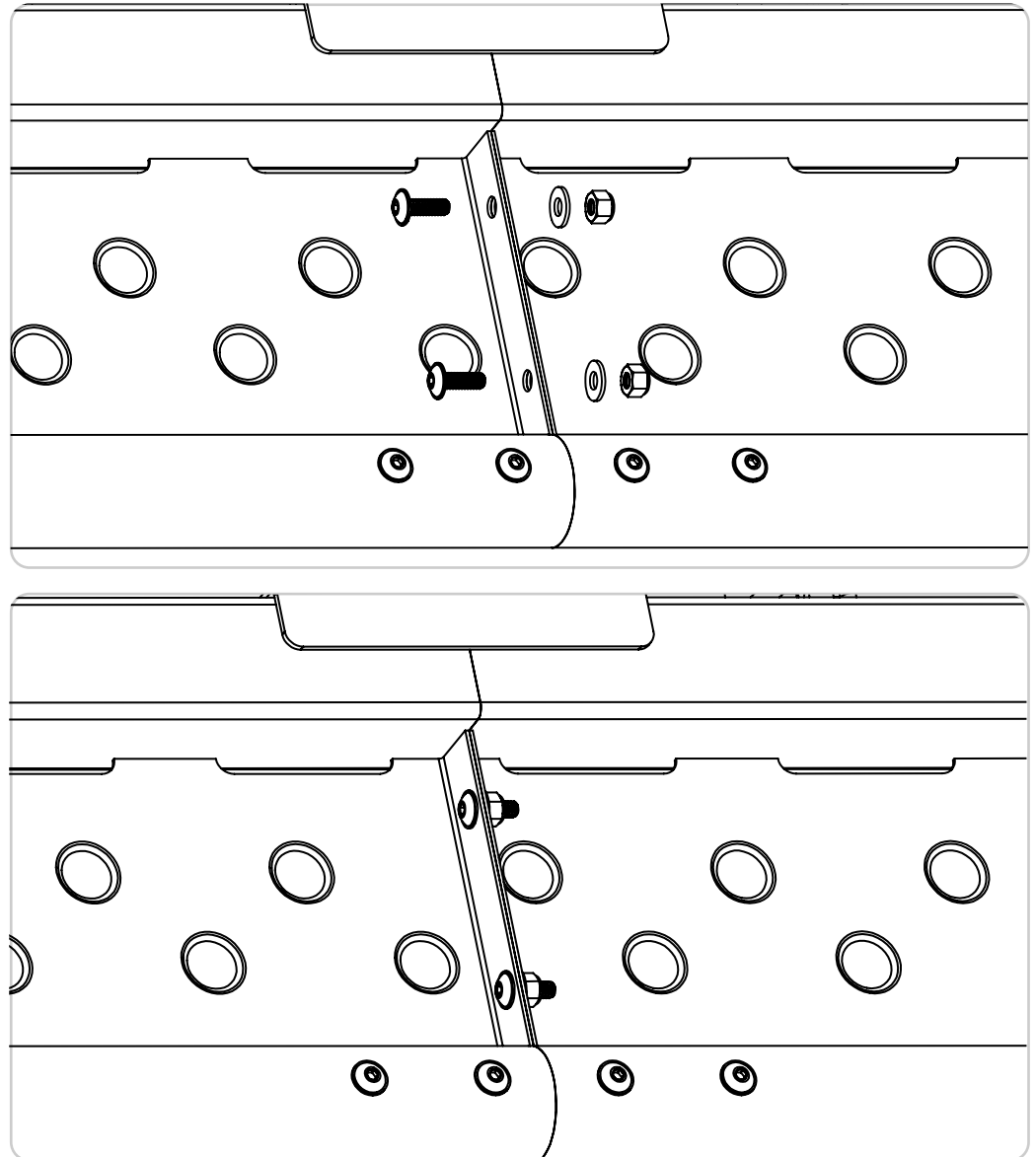


TOOLS REQUIRED FOR THIS STEP: + 5/32" ALLEN WRENCH

## STEP | 05 FINAL CHECKS/ALIGNMENT

**5.1 Confirm Alignment and Secure:** Make sure your alignment is all square and tighten all of your 3/8" screws to **20ft-lbs**.

**5.2 Finish Passenger Step:** Insert two **1/4-20 Flanged Button Head Hex Drive Screws** into the connecting plate of the Passenger Side Step to fasten the two halves together with **1/4 Screw Flat Washers** and **1/4-20 Nylon Locknuts** (FIG 13+14).



# GET OUT AND EXPLORE!

## + LEAVE US A REVIEW

---

Happy with your new FVC product? We would love to hear (and see) from you! Head to the product page and click "Leave Review." Add a short review and upload a few photos to be showcased on the product page.

## + SHARE YOUR PICS

---

We love seeing how our customers use their FVC products and following along with your adventures. Tag us in your photos with: @flatlinevanco or send them to us via email. We love posting customer pictures in our feed!

## + NEED ANY HELP?

---

If you are having any issues with your product, please reach out, and we will make it right. FVC is a company of van and outdoor enthusiasts that design and use our own products, so we want you to be as stoked on your new parts as we are!



@FLATLINEVANCO