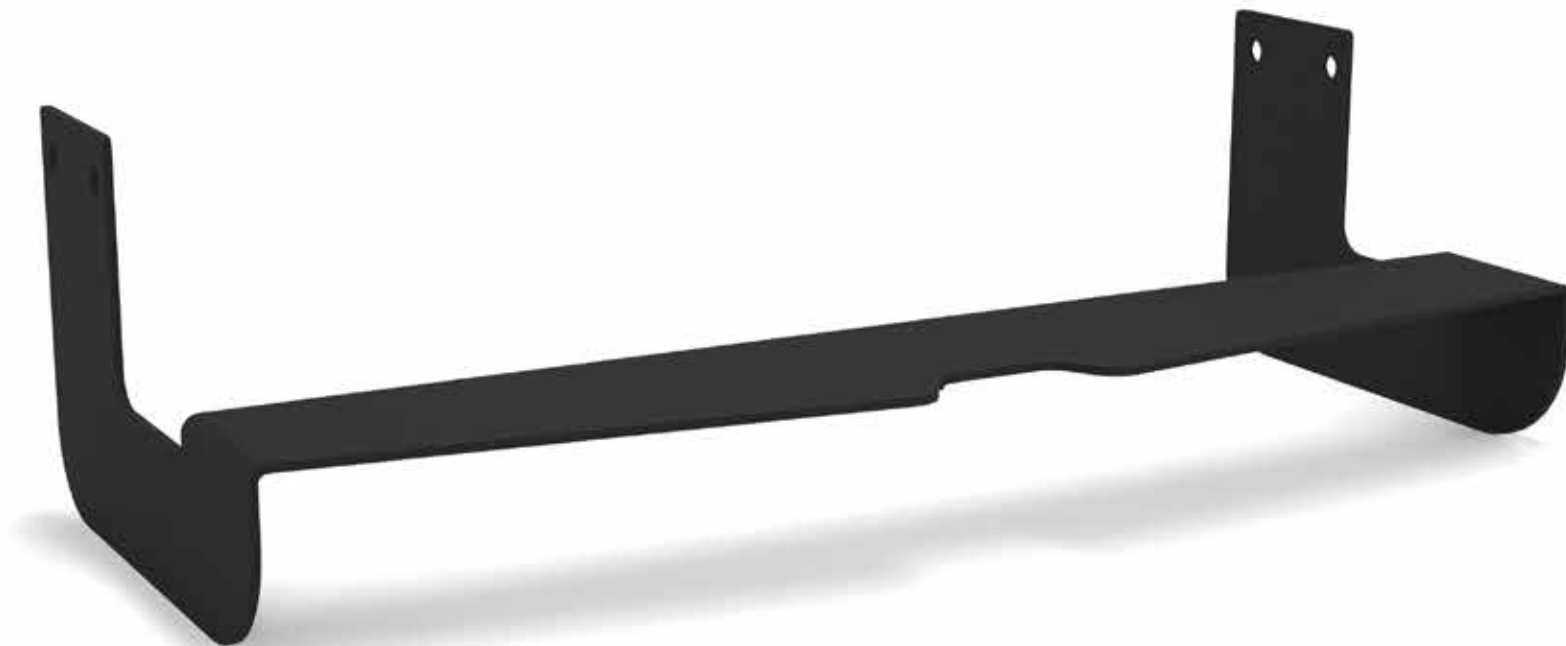




Installation Guide



Sprinter Rear Step SP1101B

All Flatline Van Co products must be properly assembled and secured before attaching to your vehicle. Improper attachment could result in an automobile accident, and could cause serious bodily injury or death to you or to others involved. You are responsible for assembling and securing Flatline Van Co products to your vehicle, checking the mounting points and attachments prior to use, and regularly inspecting the products for wear and or damage. We always recommend you use a professional to install any aftermarket accessories to your vehicle. If you have no mechanical experience and are not thoroughly familiar with the installation procedures, you must have the product installed by a professional installer or other qualified persons. The responsibility is yours and must be taken seriously for everyone's safety.



thanks.

THANK YOU!

ARE YOU EXCITED ABOUT YOUR NEW REAR STEP? HERE ARE A FEW THINGS TO DO BEFORE BEGINNING THE INSTALLATION PROCESS--

- PLEASE INSPECT THE PRODUCT TO ENSURE THERE WAS NO DAMAGE INCURRED DURING SHIPPING.
- IF THERE IS DAMAGE TO REPORT, PLEASE CONTACT OUR CUSTOMER SERVICE DEPARTMENT AS SOON AS POSSIBLE.
- NEXT, USING THE "PACKAGE CONTENTS" PAGE, CHECK INVENTORY AND FAMILIARIZE YOURSELF WITH THE PARTS AND HARDWARE.
- BEFORE YOU START:
 - IF YOU DO NOT HAVE A FACTORY HITCH, YOU WILL NEED TO PURCHASE BOLTS (**M12-1.25 x 110MM**) AND ACCOMPANYING WASHERS & NUTS TO SECURE THE REAR STEP.
 - THE EXHAUST PIPE MAY NEED TO BE PUSHED OUT OF THE WAY WHILE INSTALLING, AND IT MAY REST ON THE STEP ONCE INSTALLED.
 - A SECOND PERSON WILL MAKE THE INSTALL PROCESS MUCH EASIER.
- GATHER ALL TOOLS REQUIRED FOR INSTALL.
 - 16MM BOX WRENCH OR SOCKET
 - 18MM BOX WRENCH OR SOCKET
 - BREAKER BAR (RECOMMENDED)

TOOLS

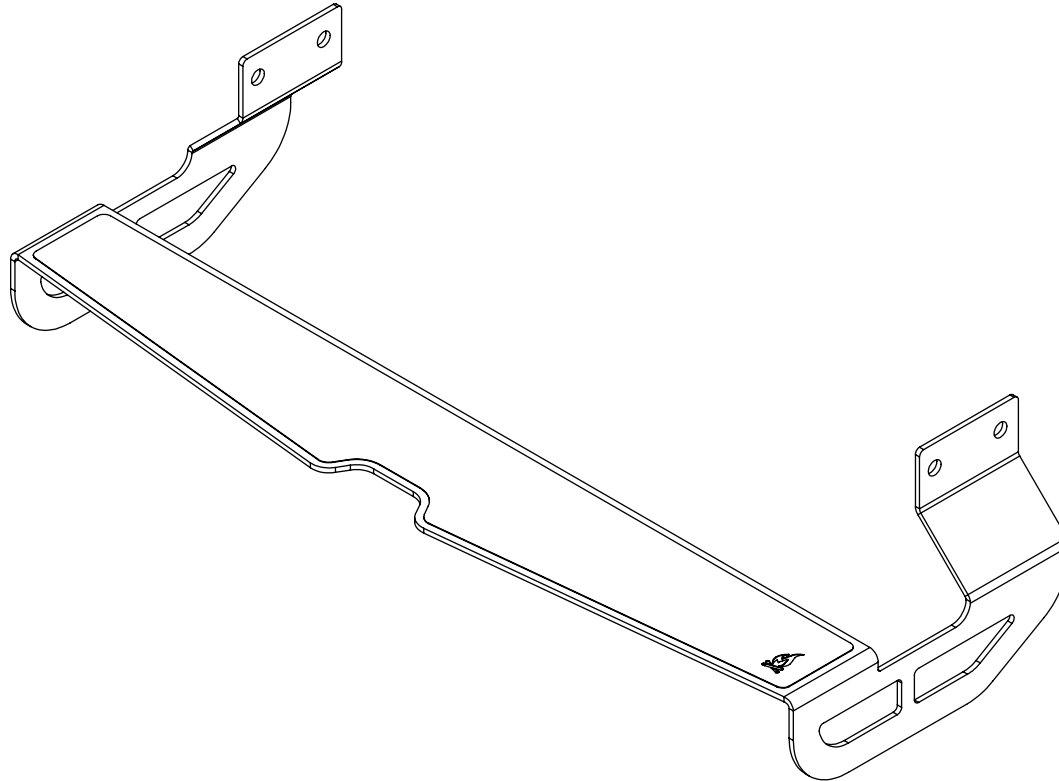


16MM WRENCH



18MM WRENCH

PACKAGE CONTENTS



REAR STEP

QTY-1

LET'S GET STARTED!

1. IF YOU DO NOT HAVE THE FACTORY TOW PACKAGE WITH STEP, PROCEED TO NEXT PAGE.
2. BEGIN BY REMOVING THE FACTORY STEP. THERE ARE THREE (3) BOLTS TO REMOVE, ALL REQUIRING A 16MM BOX WRENCH OR SOCKET. SEE **FIGURE 1** AND **FIGURE 2** FOR BOLT LOCATIONS.

FIGURE 1



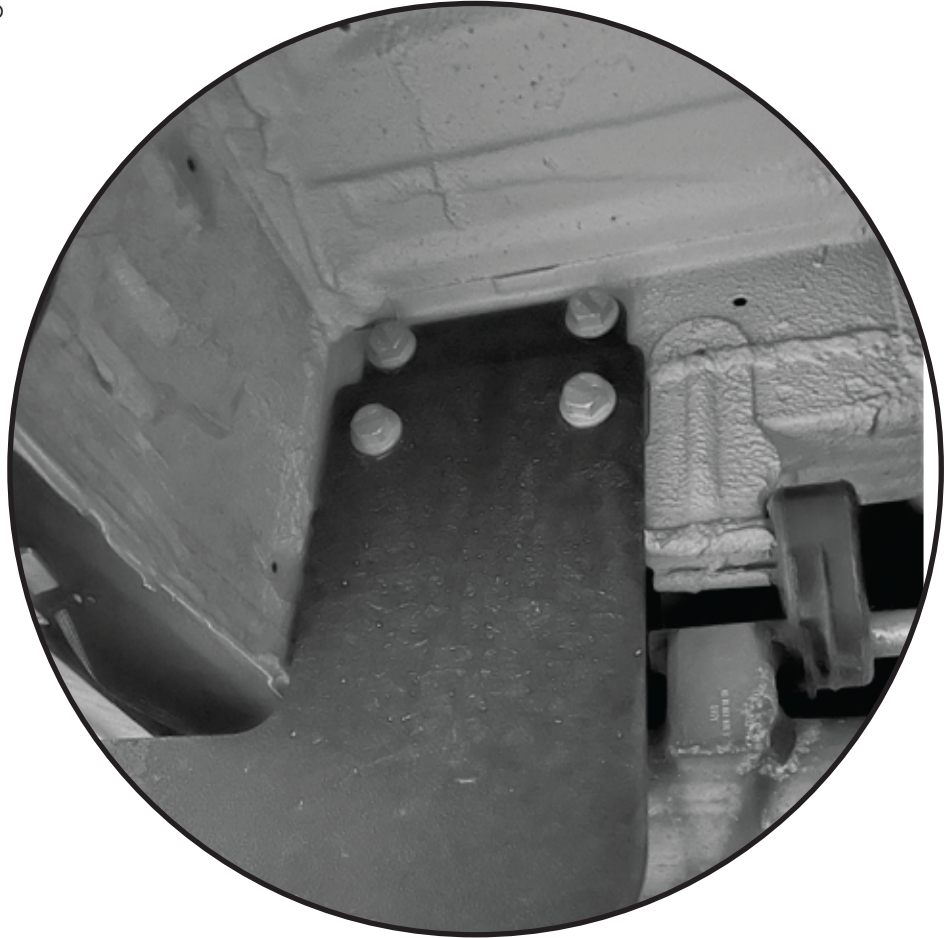
FIGURE 2



3. AFTER REMOVING THE BOLTS, THE STEP WILL SLIDE OFF.
NOTE- WE RECOMMEND REATTACHING THE BOLTS/NUTS TO THE STEP ONCE REMOVED TO ENSURE THEY DON'T GET LOST.

4. NEXT, REMOVE THE TWO (2) LOWER BOLTS THAT ATTACH THE TOW HITCH ON BOTH SIDES OF THE FRAME. THESE BOLTS REQUIRE AN 18MM BOX WRENCH OR SOCKET, AND THEY SHOULD BE VERY TIGHT WHICH MAY REQUIRE THE AFOREMENTIONED BREAKER BAR. SEE **FIGURE 3** FOR DETAIL.
5. NOW SLIDE THE REAR STEP INTO PLACE (*THIS IS WHERE A SECOND SET OF HANDS COMES IN HANDY*) AND REINSERT THE BOLTS BACK INTO PLACE.
NOTE- YOU MAY NEED TO PUSH THE EXHAUST OUT OF THE WAY, AND IT MAY END UP RESTING ON THE REAR STEP WHEN FINISHED.
6. TIGHTEN THE BOLTS DOWN (TORQUE SPEC IS 79 LB-FT)

FIGURE 3



GET OUT AND EXPLORE!

LEAVE US A REVIEW

Happy with your new FVC product? We would love to hear (and see) from you! Head to the product page and click "Leave Review." Add a short review and upload a few photos to be showcased on the product page.

SHARE YOUR PHOTOS WITH US

We love seeing how our customers use their FVC products and following along with your adventures. Tag us in your photos with @flatlinevanco or send them to us via email. We love posting customer pictures in our feed!

CUSTOMER SUPPORT

If you are having any issues with your product, please reach out, and we will make it right. FVC is a company of van and outdoor enthusiasts that design and use our own products, so we want you to be as stoked on your new parts as we are!



@flatlinevanco



facebook.com/flatlinevanco



youtube.com/c/flatlinevanco



support@flatlinevanco.com



thanks!