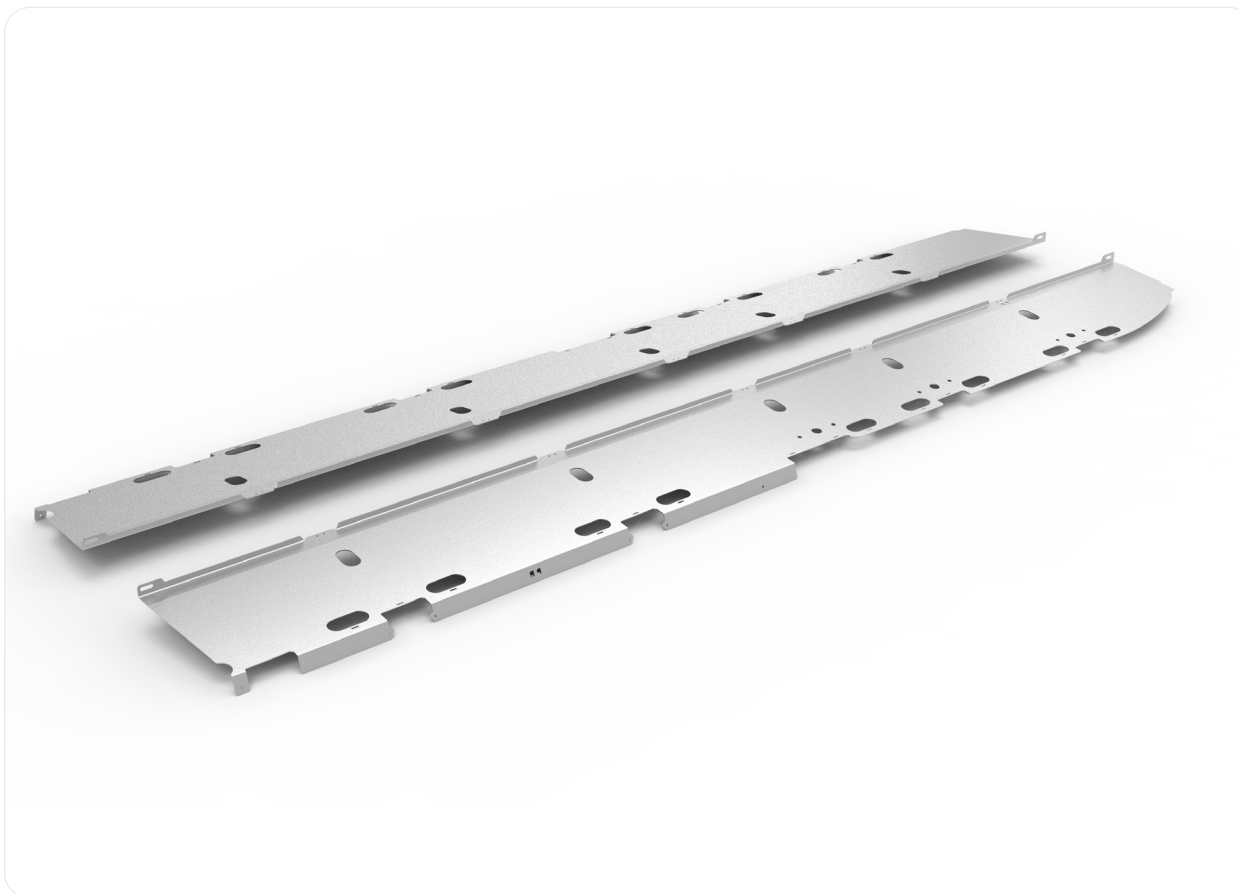




INSTALLATION GUIDE

SPRINTER VAN CEILING STRUCTURE KIT - 144" HIGH ROOF

SP1014B



TOOLS REQUIRED (NOT INCLUDED)

- | | |
|--------------------|---------------------------|
| + PANEL PRY TOOL | + MARKER |
| + POWER DRILL | + QUICK CLAMPS |
| + 3/16" DRILL BIT | + RUST PREVENTATIVE PAINT |
| + 25/64" DRILL BIT | + 5/32" ALLEN WRENCH |
| + POP RIVET TOOL | + RIVET NUT TOOL |

INSTALL INFO

TIME TO INSTALL THIS PRODUCT: 2 HOURS

Additional help is suggested for a few of the install steps.

BEFORE YOU START

Please inspect the product and packaging upon delivery to ensure there are no issues and that all parts and hardware are accounted for.

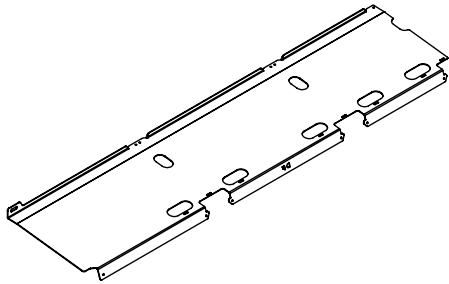
Contact us ASAP if anything is missing at:
support@flatlinevanco.com

BEFORE YOU START

All Flatline Van Co products must be properly assembled and secured before attaching to your vehicle. Improper attachment could result in an automobile accident, and could cause serious bodily injury or death to you or to others involved. You are responsible for assembling and securing Flatline Van Co products to your vehicle, checking the mounting points and attachments prior to use, and regularly inspecting the products for wear and or damage. We always recommend you use a professional to install any aftermarket accessories to your vehicle. If you have no mechanical experience and are not thoroughly familiar with the installation procedures, you must have the product installed by a professional installer or other qualified persons. The responsibility is yours and must be taken seriously for everyone's safety.

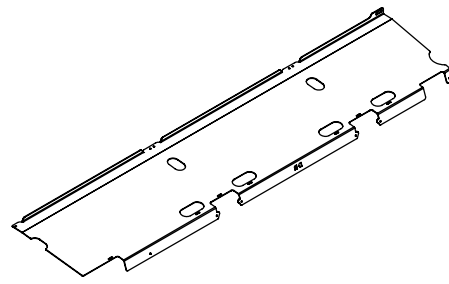


PACKAGE CONTENTS



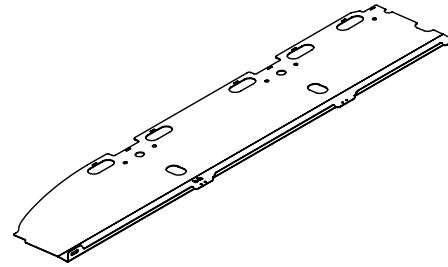
144 DRIVER FRONT CEILING PANEL

QTY: 1



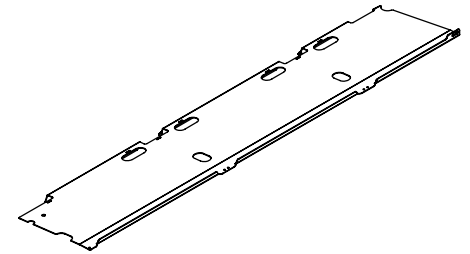
144 DRIVER REAR CEILING PANEL

QTY: 1



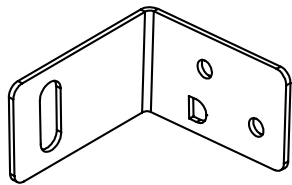
144 PASSENGER FRONT CEILING
PANEL

QTY: 1



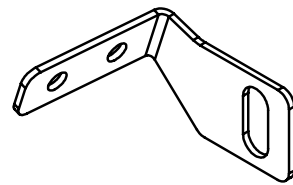
144 PASSENGER REAR CEILING
PANEL

QTY: 1



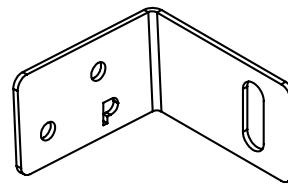
DRIVER FRONT
BRACKET

QTY: 1



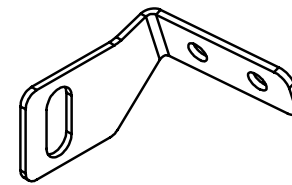
DRIVER REAR BRACKET

QTY: 1



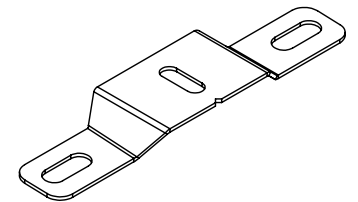
PASSENGER FRONT
BRACKET

QTY: 1



PASSENGER REAR
BRACKET

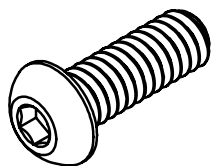
QTY: 1



PASSENGER ROOF
BRACKET

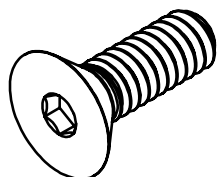
QTY: 3

HARDWARE



1/4-20 X 0.75 BUTTON
HEAD HEX DRIVE SCREW

QTY: 7



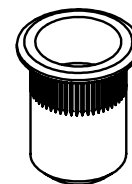
1/4-20 X 0.75 FLAT HEAD
HEX DRIVE SCREW

QTY: 6



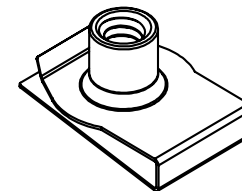
1/4 SCREW FLAT
WASHER

QTY: 7



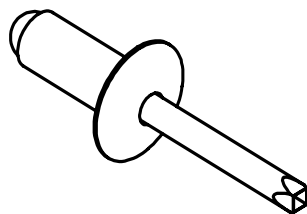
1/4-20 X 0.027-0.165 THK
HEAVY DUTY RIVET NUT

QTY: 3



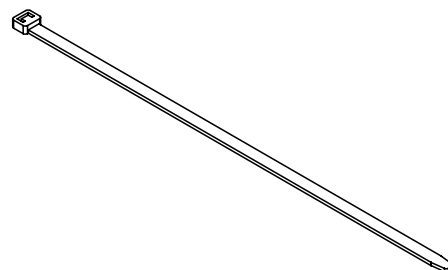
1/4-20x.531 NO SLIP
CLIP NUT

QTY: 10



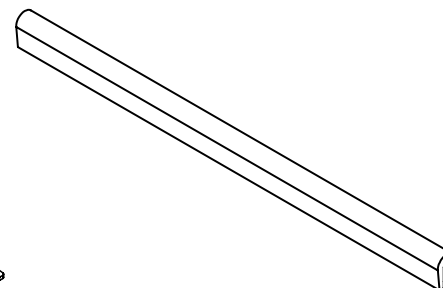
3/16 X 0.126-0.25 THK
DOMED HEAD BLIND RIVET

QTY: 50



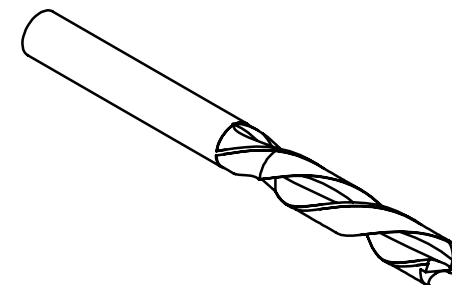
7.5" STANDARD LONG
LASTING CABLE TIE

QTY: 15



GASKET TRIM

QTY: 1



0.196 SHORT LENGTH DRILL BIT

QTY: 1

INSTALL

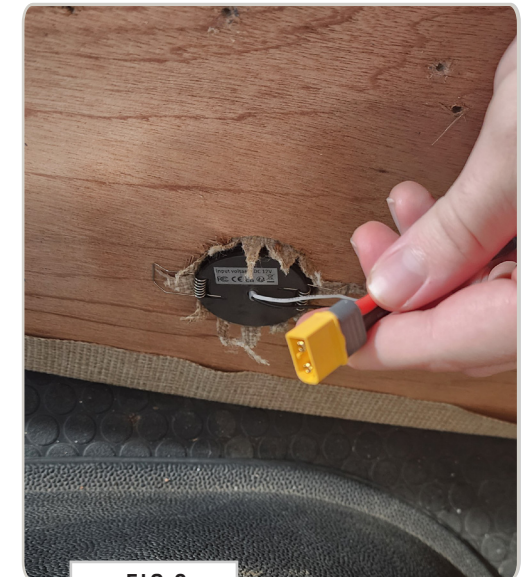
STEP | 01 LAYOUT AND INSTALL PREP

1.1 Remove B-Pillar Blocks: If not already done, remove the foam blocks on the B-Pillars located above and behind the cab area (FIG 1).

1.2 Remove Wire Cover: If not already done, remove the wire cover track near the ceiling. Using a panel pry tool, pop the wiring from the inner structure of the van (FIG 2).

1.3 Remove Interior Lights/Wall Panels: Remove any **Wall Panels** and disconnect any **Interior Lights** located along the ceiling structure of the van. (FIG 3).

TOOLS REQUIRED FOR THIS STEP: + AUTO PANEL PRY TOOL



INSTALL

TOOLS REQUIRED FOR THIS STEP: + 10MM WRENCH OR SOCKET

STEP | 01 LAYOUT AND INSTALL PREP

1.4 Remove Sliding Door Light: Using a 10mm wrench or socket, remove the light above the sliding door, if you have it. (FIG 4).

1.5 Reinstall Sliding Door Hardware: Reinstall the nuts from the sliding door light and door check (FIG 5-6).



FIG 4

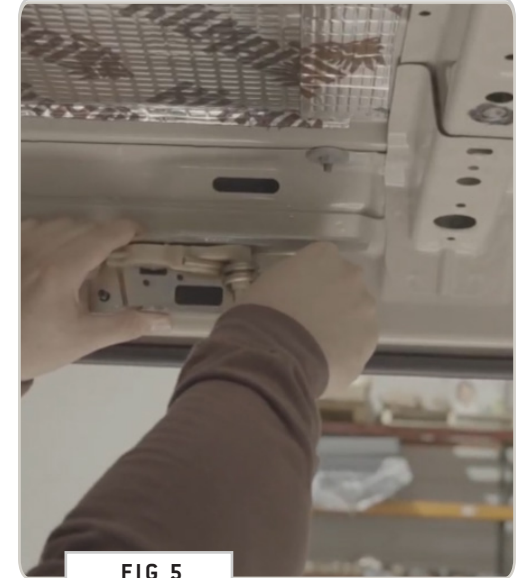


FIG 5



FIG 6

INSTALL

STEP | 02 CEILING PANEL ASSEMBLY

2.1 Prepare Ceiling Panels: Slide **Clip Nuts** onto the end tabs of each **Ceiling Panel**. Slide it on until it snaps into place in the slot and moves side to side. The **Clip Nut Barrel** should be facing the inside of the panel. (FIG 7).

2.2 Assemble Passenger Ceiling Brackets: Slide a **Clip Nut** onto each flange of the **Passenger Roof Brackets**. Slide it on until it snaps into place in the slot and moves side to side. The **Clip Nut Barrel** should be facing upwards toward the raised center. Repeat this two more times. (FIG 8).

TOOLS REQUIRED FOR THIS STEP:

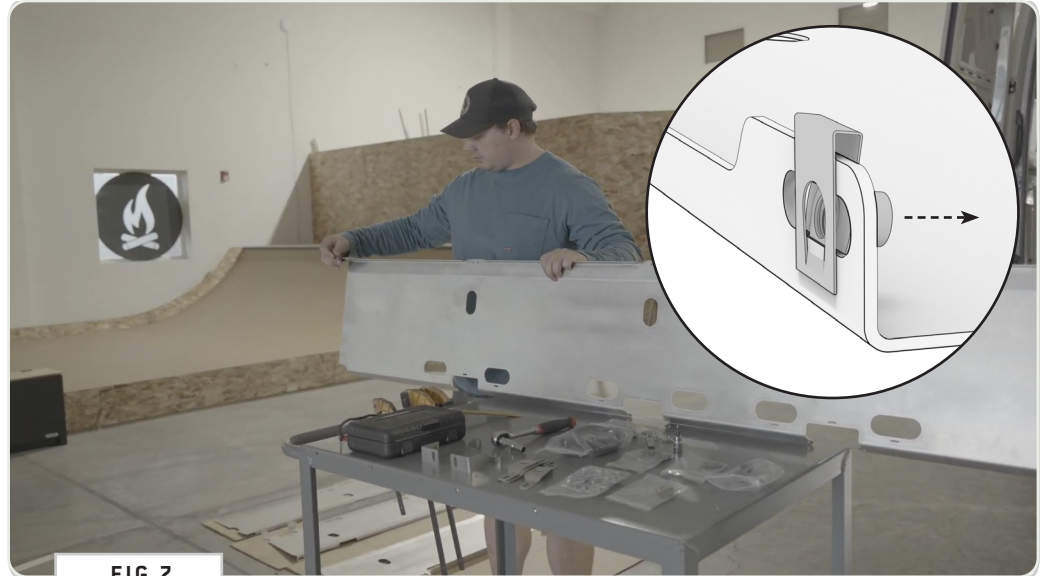


FIG 7

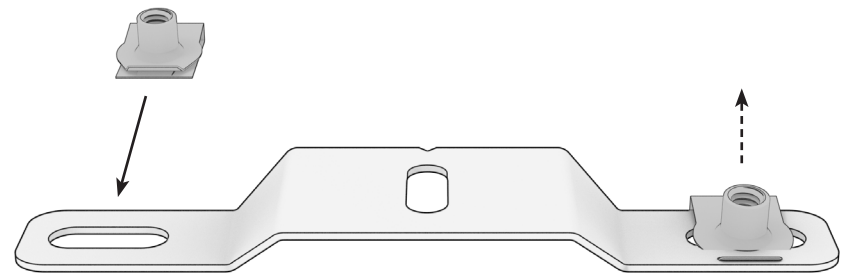


FIG 8

TOOLS REQUIRED FOR THIS STEP: + 5/32" ALLEN WRENCH

STEP | 02 CEILING PANEL ASSEMBLY

2.3 Attach Brackets to Panels: Attach the **Passenger Roof Brackets** to the **Passenger Front (PF) Panel** using countersunk screws. Tighten until snug, so the bracket can still move side to side. Make sure the notch on the center section is facing the front flange (**FIG 9-10**).

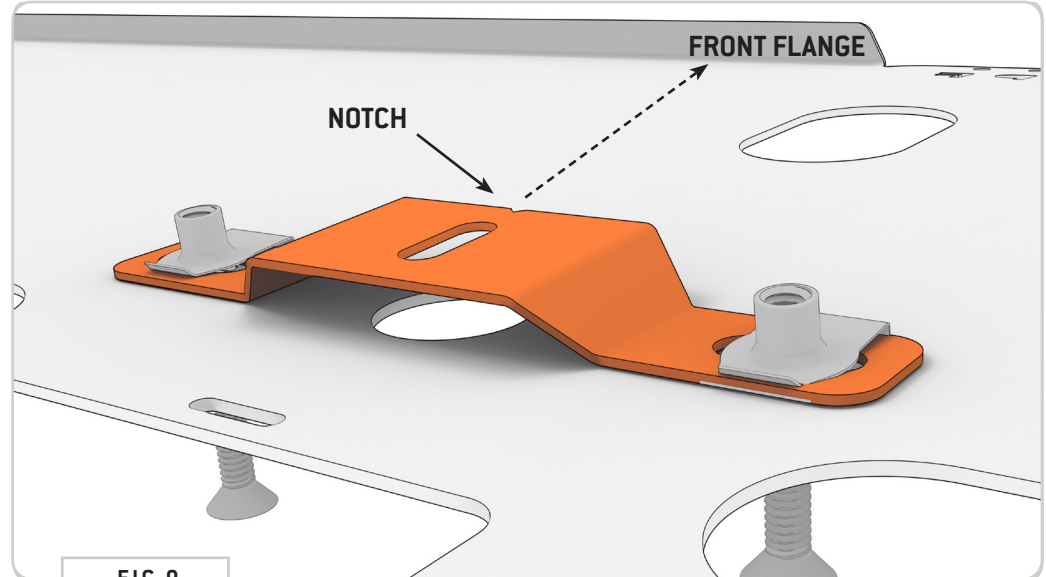


FIG 9

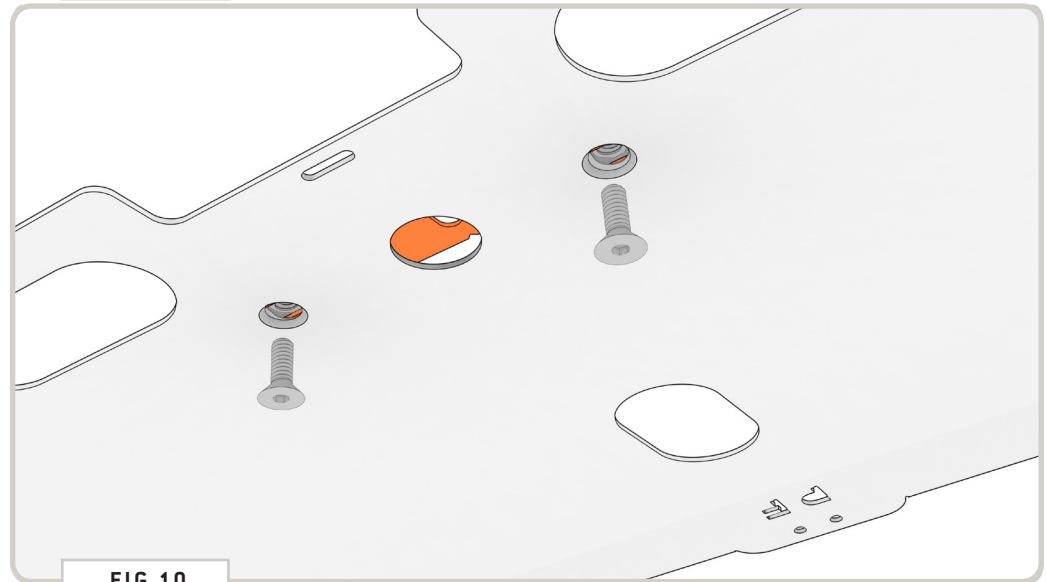


FIG 10

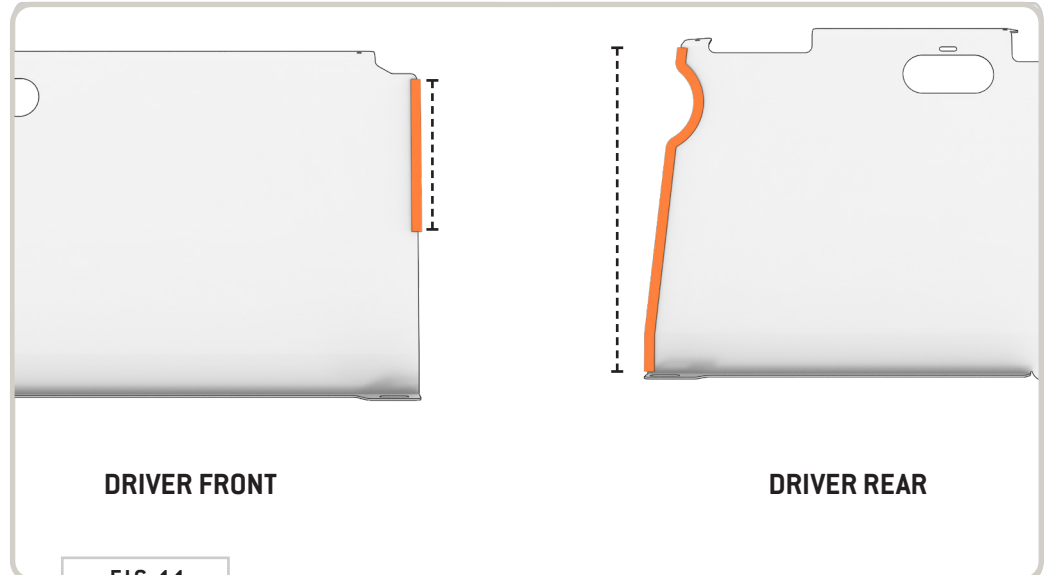
STEP | 02 CEILING PANEL ASSEMBLY

2.4 Attach Gasket to DF Panel: On the **Driver Front (DF) Panel**, attach a 6" section of rubber trim on the right side, starting at the rear flange (**FIG 11**).

2.5 Attach Gasket to DR Panel: On the **Driver Rear (DR) Panel**, attach a section of rubber trim along the full length of the left side (**FIG 11**).

2.6 Attach Gasket to PR Panel: On the **Passenger Rear (PR) Panel**, attach a section of rubber trim along the full length of the right side.

TOOLS REQUIRED FOR THIS STEP:



TOOLS REQUIRED FOR THIS STEP: + QUICK CLAMPS

STEP | 03 INSTALL DRIVER SIDE PANEL

3.1 Position DF Panel: Place the **Driver Front (DF) Panel** on the van and clamp it in place (**FIG 13**).

Position the panel with the short flat section against the ceiling crossmember along the **B-Pillar** and the rear flange against the inner structure of the van (**FIG 14**).

You can help locate the part by lining up the flange profile with the square cutouts in the inner structure. The tab on the short flat section with two holes should be somewhat centered on the ceiling crossbars (**FIG 15**).

Once the panel is centered, arrange the clamps until it is firmly situated into position (**FIG 16**).



FIG 13

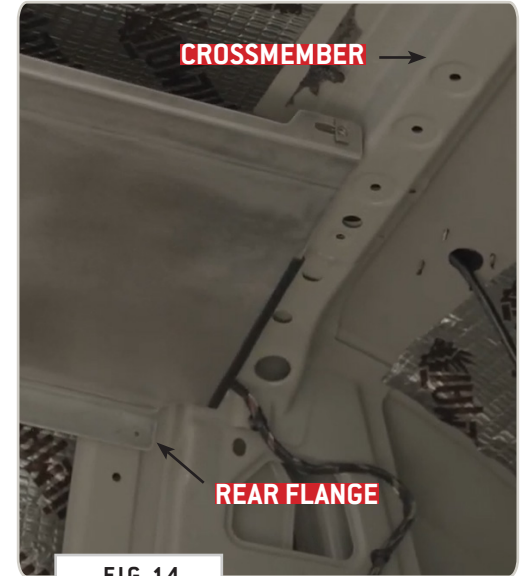


FIG 14



FIG 15

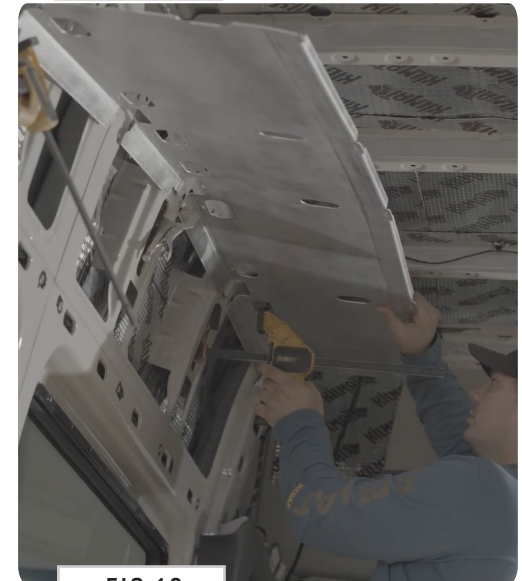


FIG 16

TOOLS REQUIRED FOR THIS STEP: + QUICK CLAMPS

STEP | 03 INSTALL DRIVER SIDE PANEL

3.2 Position DR Panel: Place the **Driver Rear (DR) Panel** on the van and clamp it in place (**FIG 17**). This part needs to line up with the front panel, and the sides should have minimal to no gap (**FIG 18-19**).

There might need to be a little adjustment front to back on the van to make sure that all the upper mounting holes line up on the ceiling crossbars.

Once the panel is centered, arrange the clamps until it is firmly situated into position (**FIG 20**).



FIG 17



FIG 18



FIG 19

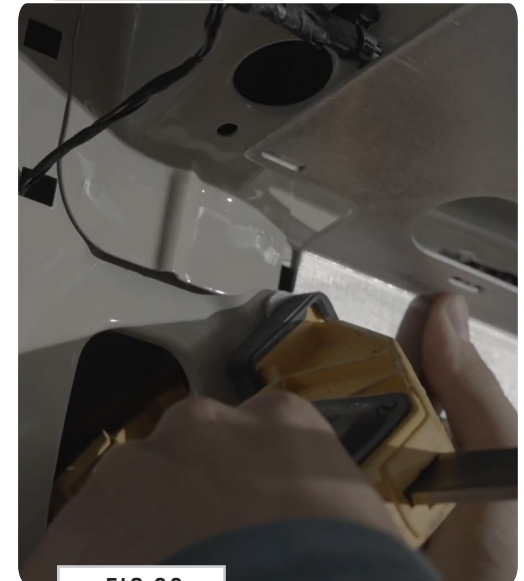


FIG 20

STEP | 03 INSTALL DRIVER SIDE PANEL

3.3 Drill Mounting Holes: Once everything is in position, drill out each of the mounting holes using the provided **3/16" Drill Bit (FIG 21)**. Remove panels and paint drill holes with a **Rust Preventative Paint**.

3.4 Rivet Panels to Van: After the paint dries, rivet the panels to the van. Repeat this for every mounting hole (**FIG 22**).

TOOLS REQUIRED FOR THIS STEP:

- + POWER DRILL
- + 3/16" DRILL BIT
- + RUST PREVENTATIVE PAINT
- + POP RIVET TOOL



FIG 21



FIG 22

STEP | 04 DRIVER SIDE BRACKETS

4.1 Attach DF Bracket: Attach the Driver Front ('D') Bracket to the Driver Front Panel using a 1/4-20 Button Head Screw And Flat Washer.

4.2 Position DF Bracket: Move the bracket into position where the flange is flat against the van crossmember (FIG 23).

4.3 Secure DF Bracket: Drill out the mounting holes (FIG 24), paint, and rivet the bracket in place (FIG 25).

TOOLS REQUIRED FOR THIS STEP:

- + 5/32" ALLEN WRENCH
- + POWER DRILL
- + 3/16" DRILL BIT
- + RUST PREVENTATIVE PAINT
- + POP RIVET TOOL



FIG 23



FIG 24



FIG 25

STEP | 04 DRIVER SIDE BRACKETS

4.4 Attach DR Bracket: Attach the **Driver Rear Bracket** to the Driver Front panel using a **1/4-20 Button Head Screw And Flat Washer** (**FIG 26**).

4.5 Position DR Bracket: Move this bracket into position where the flange is flat against the van, above the cutout (**FIG 26**).

4.6 Secure DR Bracket: Drill out the mounting holes (**FIG 27**) and rivet the bracket in place (**FIG 28**).

TOOLS REQUIRED FOR THIS STEP:

- + 5/32" ALLEN WRENCH
- + POWER DRILL
- + 3/16" DRILL BIT
- + RUST PREVENTATIVE PAINT
- + POP RIVET TOOL

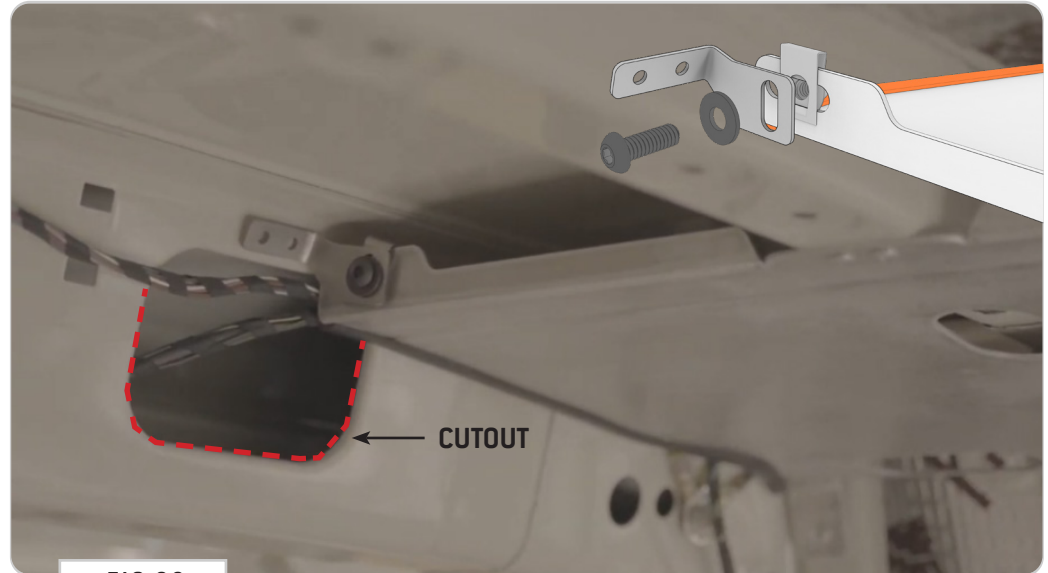


FIG 26



FIG 27

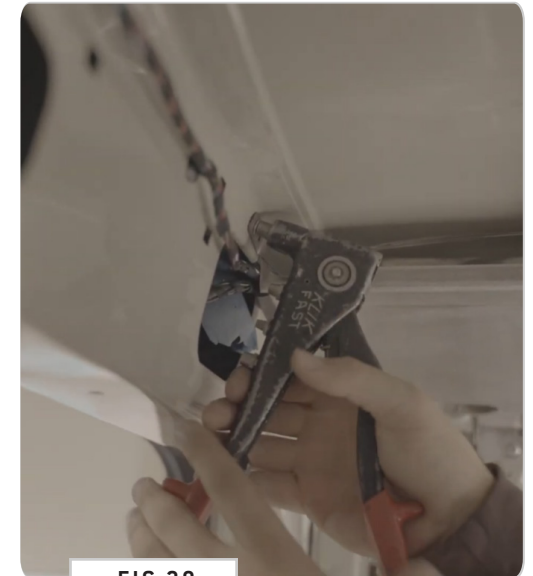


FIG 28

STEP | 05 PASS SIDE PANEL INSTALL

5.1 Position PF Panel: Repeating the same process as the Driver Panels, place the Passenger Front (PF) Panel into position (FIG 29).

5.2 Identify Drill Holes: Take note of the holes in the ceiling crossmembers that line up with the slots in the passenger roof brackets (FIG 30).

5.3 Drill Mounting Holes: Drill out the marked holes using a 25/64" Drill Bit (FIG 31). Paint drill holes with Rust Preventative Paint.

5.4 Install Rivet Nuts: Install the 1/4-20 Rivet Nuts into the new holes (FIG 32).

NOTE - We recommend using a pneumatic or electric drill adapter rivet nut tool for this, although a manual rivet nut tool can work if you have enough ground clearance. We like the Astro Tools ADN38 XL model for a drill adapter. Pictured for reference.

5.5 Secure PF Panel: Attach the Passenger Front Panel to the ceiling crossmembers (into the new rivet nuts) using a 1/4-20 X 0.75 Button Head Screw And Washer. Tighten the screws until they are snug, but ensure the part can still move along the length of the slot in the bracket.

TOOLS REQUIRED FOR THIS STEP:

- + QUICK CLAMP
- + MARKER
- + POWER DRILL
- + 25/64" DRILL BIT
- + RUST PREVENTATIVE PAINT
- + RIVET NUT TOOL
- + 5/32" ALLEN WRENCH



TOOLS REQUIRED FOR THIS STEP: + 5/32" ALLEN WRENCH

STEP | 05 PASS SIDE PANEL INSTALL

5.6 Position PR Panel: Place the **Passenger Rear (PR) Panel** on the van and clamp it in place (**FIG 33-34**). The part needs to line up with the front panel, and the sides should have minimal to no gap.

There might need to be a little adjustment front to back on the van to make sure that all the upper mounting holes line up on the ceiling crossbars.

5.7 Secure PR Panel: Once everything is in position, fully tighten the button head screws in the **Passenger Front Panel** (**FIG 35**).



FIG 33

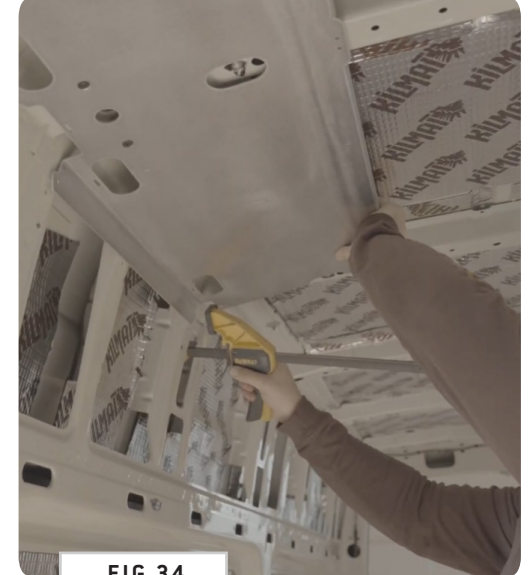


FIG 34



FIG 35

STEP | 05 PASS SIDE PANEL INSTALL

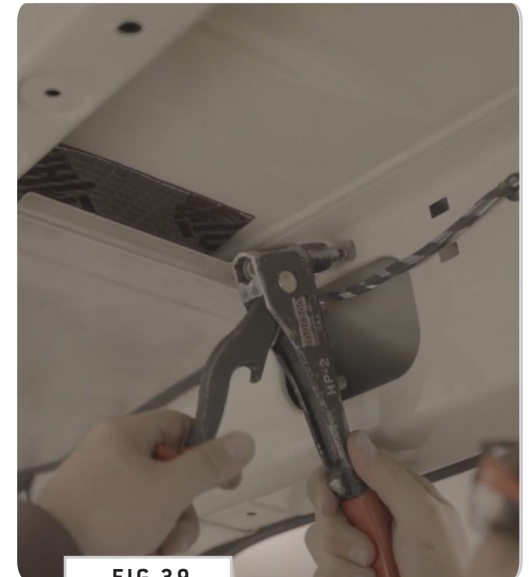
5.8 Drill Holes: Drill out the mounting holes for the **Passenger Panels** using the provided **3/16" Drill Bit** (**FIG 36**).

5.9 Rivet Passenger Panels to Van: Rivet the **Panels** to the van (**FIG 37**).

5.10 Install Passenger Brackets: Install the **Passenger Front** and **Passenger Rear ('P') Brackets** by repeating steps 4.1 through 4.6 (**STEP 04**) on the passenger side (**FIG 38-39**).

TOOLS REQUIRED FOR THIS STEP:

- + 5/32" ALLEN WRENCH
- + POWER DRILL
- + 3/16" DRILL BIT
- + RUST PREVENTATIVE PAINT
- + POP RIVET TOOL



GET OUT AND EXPLORE!

+ LEAVE US A REVIEW

Happy with your new FVC product? We would love to hear (and see) from you! Head to the product page and click "Leave Review." Add a short review and upload a few photos to be showcased on the product page.

+ SHARE YOUR PICS

We love seeing how our customers use their FVC products and following along with your adventures. Tag us in your photos with: @flatlinevanco or send them to us via email. We love posting customer pictures in our feed!

+ NEED ANY HELP?

If you are having any issues with your product, please reach out, and we will make it right. FVC is a company of van and outdoor enthusiasts that design and use our own products, so we want you to be as stoked on your new parts as we are!



@FLATLINEVANCO