



INSTALLATION GUIDE

SPRINTER VAN CROSSBAR ROOF RACK - ALL SIZES

SP0148B



TOOLS REQUIRED (NOT INCLUDED)

- + MEASURING TAPE
- + AUTO PANEL PRY TOOL
- + 7/32" ALLEN WRENCH
- + 3/16" ALLEN WRENCH
- + 5/32" ALLEN WRENCH

INSTALL INFO

TIME TO INSTALL THIS PRODUCT: 1-2 HOURS

Additional help is suggested for a few of the install steps.

BEFORE YOU START

Please inspect the product and packaging upon delivery to ensure there are no issues and that all parts and hardware are accounted for.

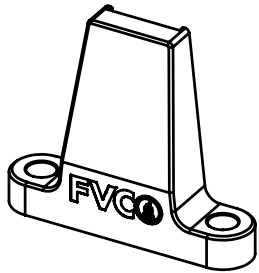
Contact us ASAP if anything is missing at:
support@flatlinevanco.com

BEFORE YOU START

All Flatline Van Co products must be properly assembled and secured before attaching to your vehicle. Improper attachment could result in an automobile accident, and could cause serious bodily injury or death to you or to others involved. You are responsible for assembling and securing Flatline Van Co products to your vehicle, checking the mounting points and attachments prior to use, and regularly inspecting the products for wear and or damage. We always recommend you use a professional to install any aftermarket accessories to your vehicle. If you have no mechanical experience and are not thoroughly familiar with the installation procedures, you must have the product installed by a professional installer or other qualified persons. The responsibility is yours and must be taken seriously for everyone's safety.

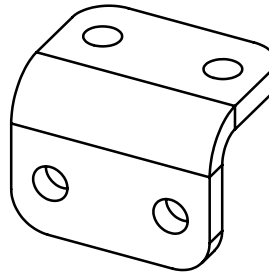


PACKAGE CONTENTS



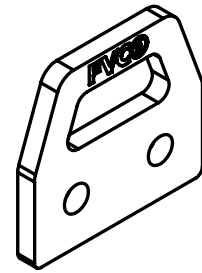
ROOF RACK TOWER

QTY: 4



CROSSBAR BRACKET

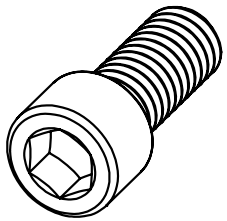
QTY: 4



END CAP

QTY: 4

HARDWARE



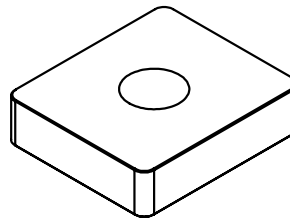
3/8-16 X 0.875 SOCKET
HEAD HEX DRIVE
SCREW

QTY: 8



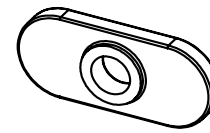
1/4-20 X 0.5 FLANGED
BUTT HEAD HEX
DRIVE SCREW

QTY: 24



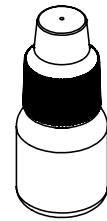
SPRINTER RAIL NUT

QTY: 8



1/4-20 T-NUT

QTY: 8



THREADLOCKER

QTY: 1

TOOLS REQUIRED FOR THIS STEP: + AUTO PANEL PRY TOOL

STEP | 01 LAYOUT AND INSTALL PREP

1.1 Prep Roof Rails: If your **Roof Rails** have plastic end caps, pry them off at this time using an **Auto Panel Pry Tool** or **Flathead Screwdriver** (FIG 1).

1.2 Layout Install Location: Keep in mind the layout of your planned or existing roof top array (solar panels, fans, tents, etc.) and choose an install location suitable to your needs.

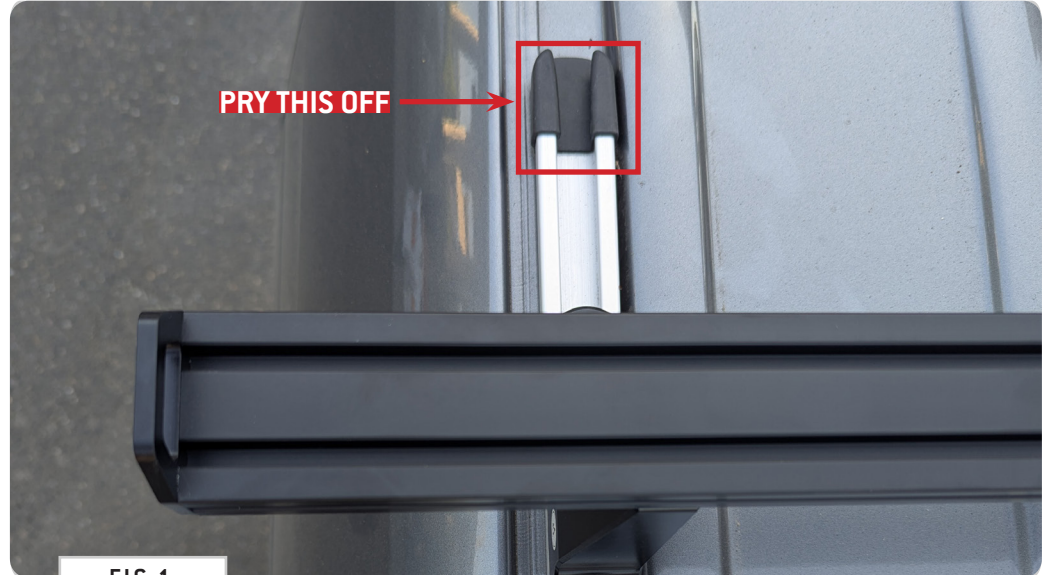


FIG 1



FIG 2

STEP | 02 ROOF RACK TOWER INSTALL

2.1 Assembly Roof Rack Towers: Prepare the **Roof Rack Towers** for install using **(2ea) 3/8-16 x 0.875 Socket Head Hex Drive Screws** and **Rail Nuts** (FIG 3). Leave them loose enough to slide into the **Roof Rails** (FIG 4).

2.2 Layout Roof Rack Towers: Based on the desired location of your **Crossbar Roof Rack**, layout the **Towers** accordingly along your **Roof Rails** (FIG 5).

TOOLS REQUIRED FOR THIS STEP:

- + MEASURING TAPE
- + 7/32" ALLEN WRENCH



FIG 3

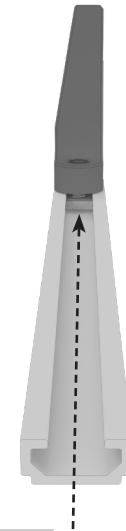


FIG 4

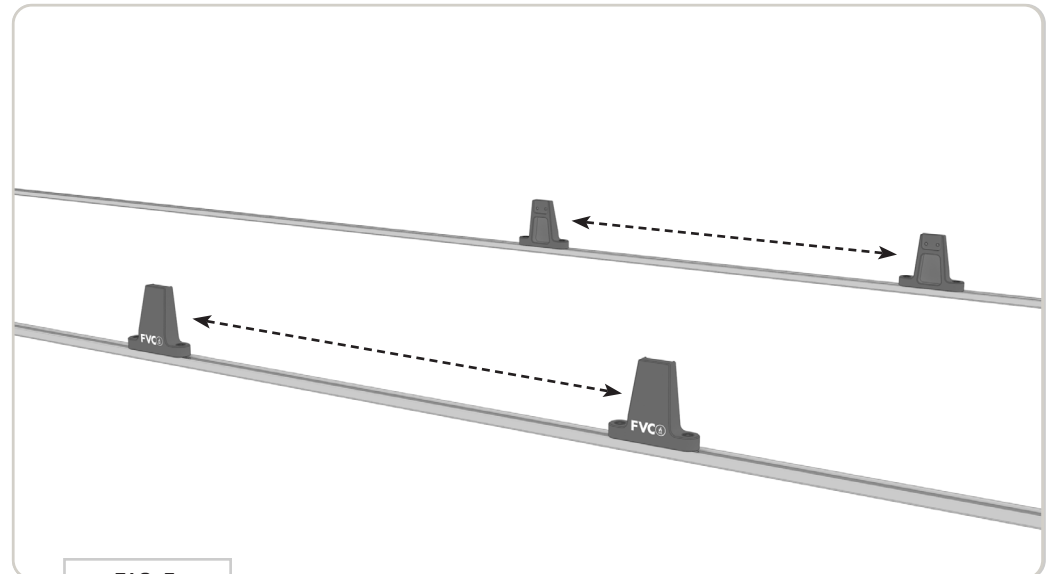


FIG 5

TOOLS REQUIRED FOR THIS STEP:

- + 3/16" ALLEN WRENCH
- + 5/32" ALLEN WRENCH

STEP | 03 CROSSBAR INSTALL

3.1 Attach End Caps to Crossbars: Find the **Crossbar End Caps** and attach to your **Crossbar** using (2ea) 1/4-20 x 0.75 **Flanged Button Head Hex Drive Screws** and **Loctite** (FIG 6).

3.2 Insert T-Nuts: Slide (2) 1/4-20 **T-Nuts** into the cutouts of the **Crossbar** (FIG 7).

NOTE- Make sure that the raised edge of the **T-Nut** goes in first and that the flat edge is in the position to receive hardware.

3.3 Attach Crossbar Bracket to Crossbar: Take a **Crossbar Bracket** and position it against the surface of the **Crossbar**. Make sure it is in the orientation as shown in **FIG 8** that has the mounting flanges facing inward. Loosely attach to **T-Nuts** using (2ea) 1/4-20 x 0.5 **Flanged Button Head Hex Drive Screws** (FIG 8).

3.4 Attach Crossbar Bracket to Roof Rack Tower: Attach **Crossbar Assembly** to the pre-threaded locations of the **Roof Rack Tower** using (2ea) 1/4-20 x 0.5 **Flanged Button Head Hex Drive Screws** (FIG 9).

3.5 Repeat Steps and Align: Repeat this process for the second set of towers and align as needed. Tighten down all fasteners and enjoy your new **Roof Rack**!

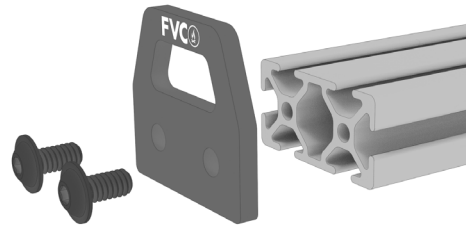


FIG 6

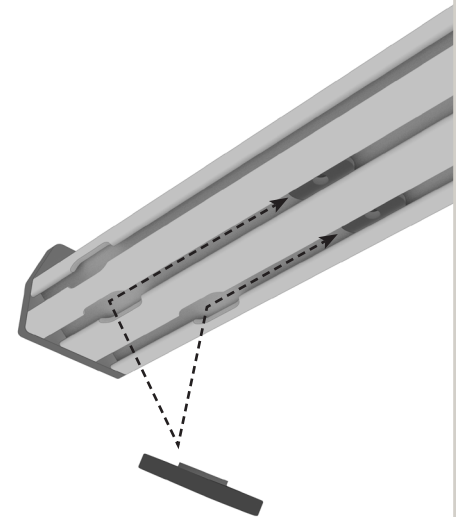


FIG 7

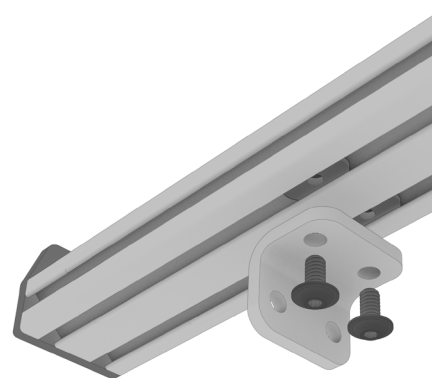


FIG 8

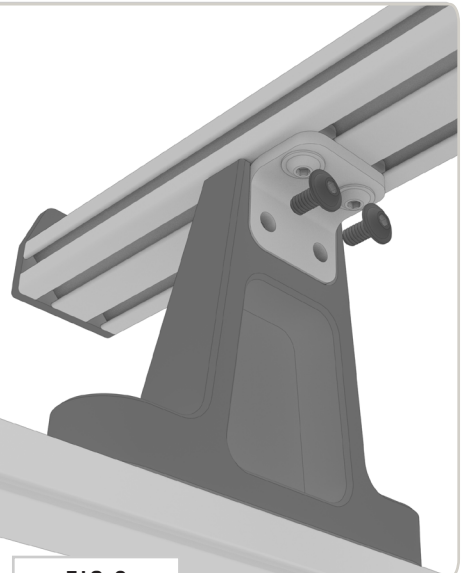


FIG 9

GET OUT AND EXPLORE!

+ LEAVE US A REVIEW

Happy with your new FVC product? We would love to hear (and see) from you! Head to the product page and click "Leave Review." Add a short review and upload a few photos to be showcased on the product page.

+ SHARE YOUR PICS

We love seeing how our customers use their FVC products and following along with your adventures. Tag us in your photos with: @flatlinevanco or send them to us via email. We love posting customer pictures in our feed!

+ NEED ANY HELP?

If you are having any issues with your product, please reach out, and we will make it right. FVC is a company of van and outdoor enthusiasts that design and use our own products, so we want you to be as stoked on your new parts as we are!



@FLATLINEVANCO