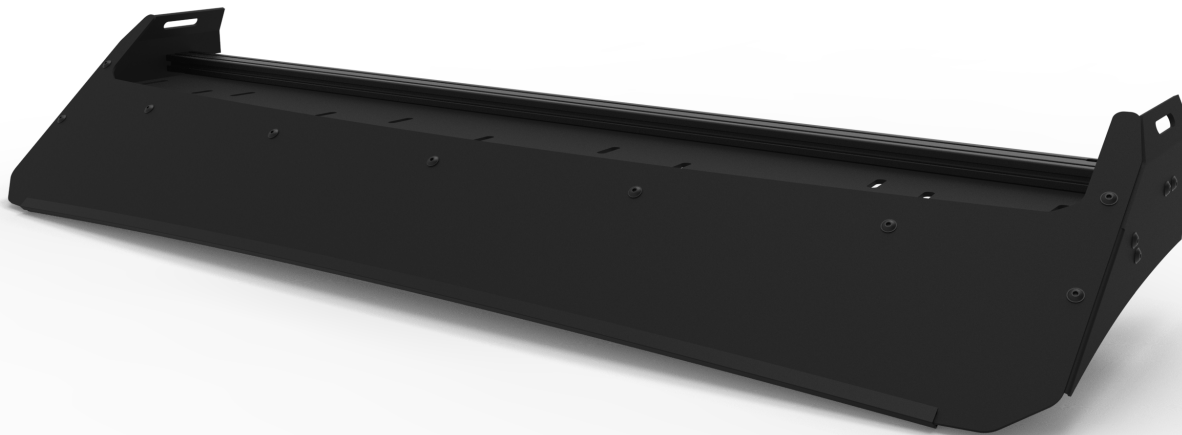




INSTALLATION GUIDE

SPRINTER VAN STANDARD ROOF RACK LIGHT BAR FAIRING

SP0114B.4



TOOLS REQUIRED (NOT INCLUDED)

- + MEASURING TAPE
- + 7/32" ALLEN WRENCH
- + 3/16" ALLEN WRENCH
- + 5/32" ALLEN WRENCH
- + 7/16" WRENCH OR SOCKET

INSTALL INFO

TIME TO INSTALL THIS PRODUCT: 45 MINUTES

Additional help is suggested for a few of the install steps.

BEFORE YOU START

Please inspect the product and packaging upon delivery to ensure there are no issues and that all parts and hardware are accounted for.

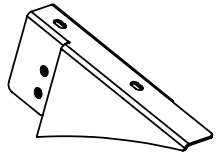
Contact us ASAP if anything is missing at:
support@flatlinevanco.com

BEFORE YOU START

All Flatline Van Co products must be properly assembled and secured before attaching to your vehicle. Improper attachment could result in an automobile accident, and could cause serious bodily injury or death to you or to others involved. You are responsible for assembling and securing Flatline Van Co products to your vehicle, checking the mounting points and attachments prior to use, and regularly inspecting the products for wear and or damage. We always recommend you use a professional to install any aftermarket accessories to your vehicle. If you have no mechanical experience and are not thoroughly familiar with the installation procedures, you must have the product installed by a professional installer or other qualified persons. The responsibility is yours and must be taken seriously for everyone's safety.

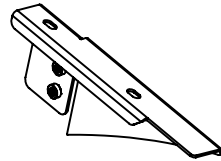


PACKAGE CONTENTS



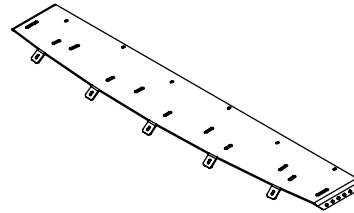
DRIVER SIDE FAIRING
BRACKET

QTY: 1



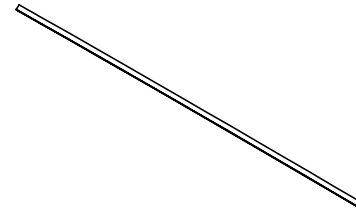
PASSENGER SIDE FAIRING
BRACKET

QTY: 1



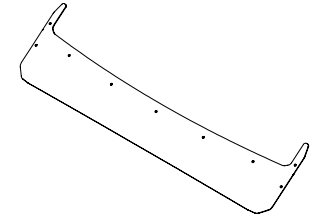
CROSSBAR FAIRING BRACKET

QTY: 1



FAIRING GASKET TRIM

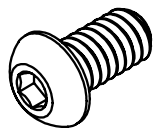
QTY: 1



FRONT FAIRING

QTY: 1

HARDWARE



1/4-20 X 0.5 BUTTON
HEAD HEX DRIVE
SCREW

QTY: ??



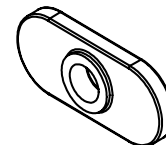
1/4 SCREW BELLEVILLE
SPRING LOCK
WASHER

QTY: ??



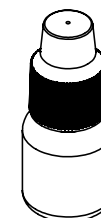
1/4 SCREW FLAT
WASHER

QTY: ??



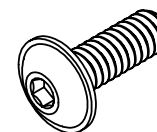
1/4-20 TNUT

QTY: ??



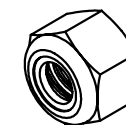
THREADLOCKER

QTY: ??



1/4-20 X 0.75
FLANGED BUTTON
HEAD HEX DRIVE
SCREW

QTY: ??



1/4-20
NYLON LOCKNUT

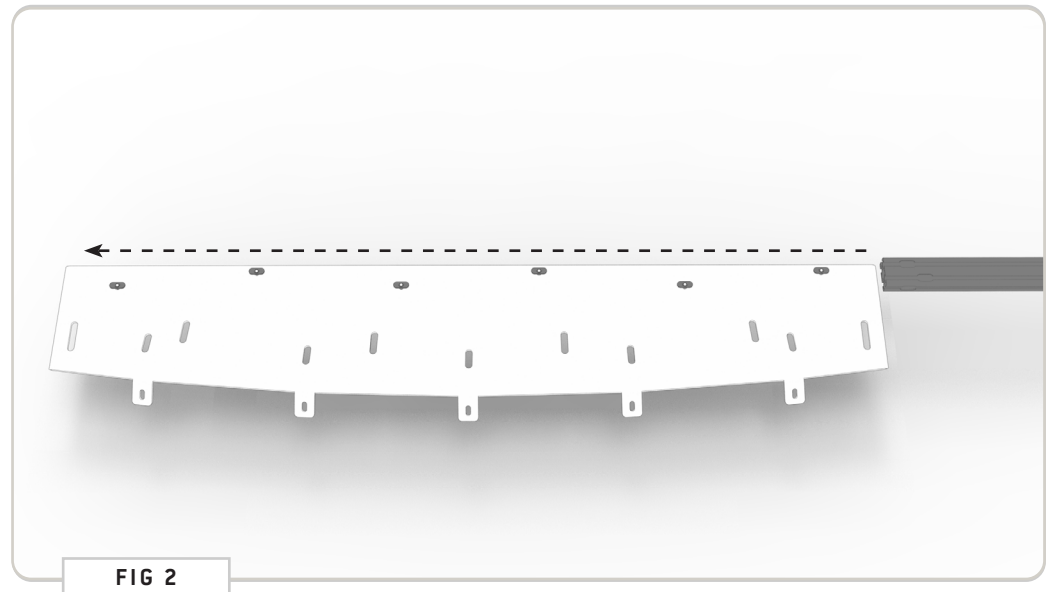
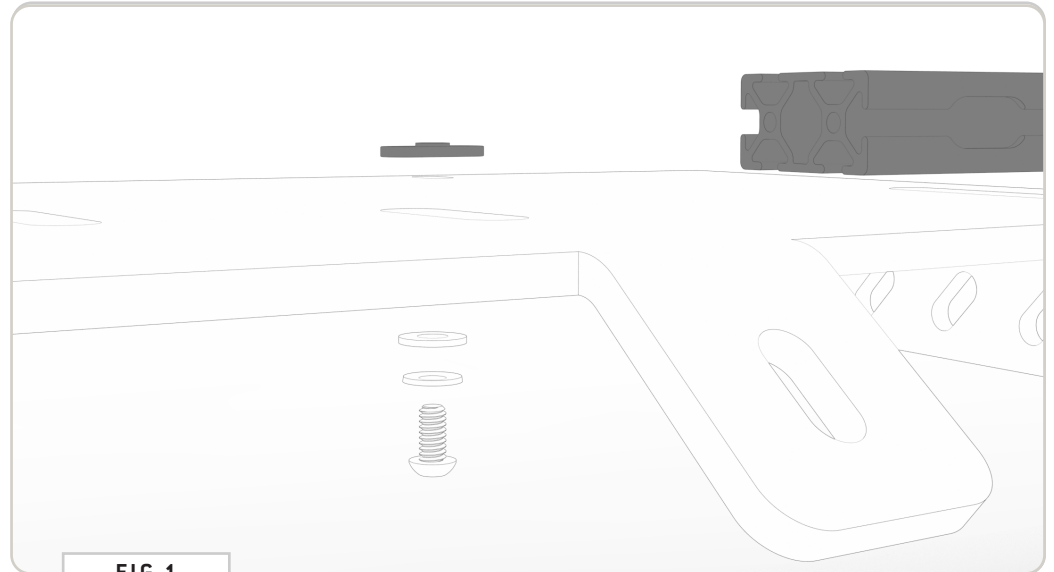
QTY: ??

STEP | 01 FAIRING ASSEMBLY

1.1 Crossbar Fairing Bracket: Stack a 1/4-20" x 0.5 Button Head Screw, 1/4" Belleville Lock Washer and 1/4" Flat Washer as shown in FIG 10 and insert into the six available front holes of the Crossbar Fairing Bracket. Loosely assemble using a T-Nut. You'll only want to screw the T-Nuts on a little in order to provide clearance for the next step.

1.2 Crossbar Install: Now, slide the Crossbar onto the Crossbar Fairing Bracket. You'll have to straighten each T-Nut as you go to get it to feed into the crossbar correctly (FIG 2).

TOOLS REQUIRED FOR THIS STEP: + 5/32" ALLEN WRENCH



STEP | 01 FAIRING ASSEMBLY

1.3 Driver and Passenger Side Fairing Brackets: Attach the **Driver and Passenger Side Fairing Brackets** to the Assembly using **1/4-20 x 0.75 Flanged Button Head Screws, Flat Washers and Nylon Locknuts (FIG 3).**

1.4 Fairing Gasket Trim: Attach the **Fairing Gasket Trim** to the **Front Fairing** in the orientation shown in **FIG 4.** Make sure the “bulbed” side is facing inward.

TOOLS REQUIRED FOR THIS STEP: + 3/16" ALLEN WRENCH
+ 7/16" WRENCH OR SOCKET

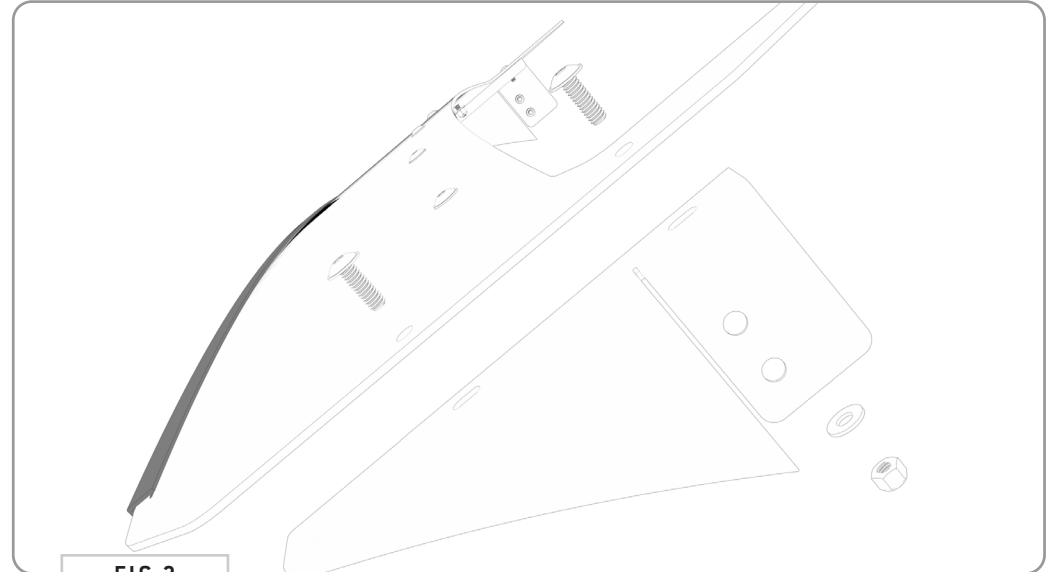


FIG 3

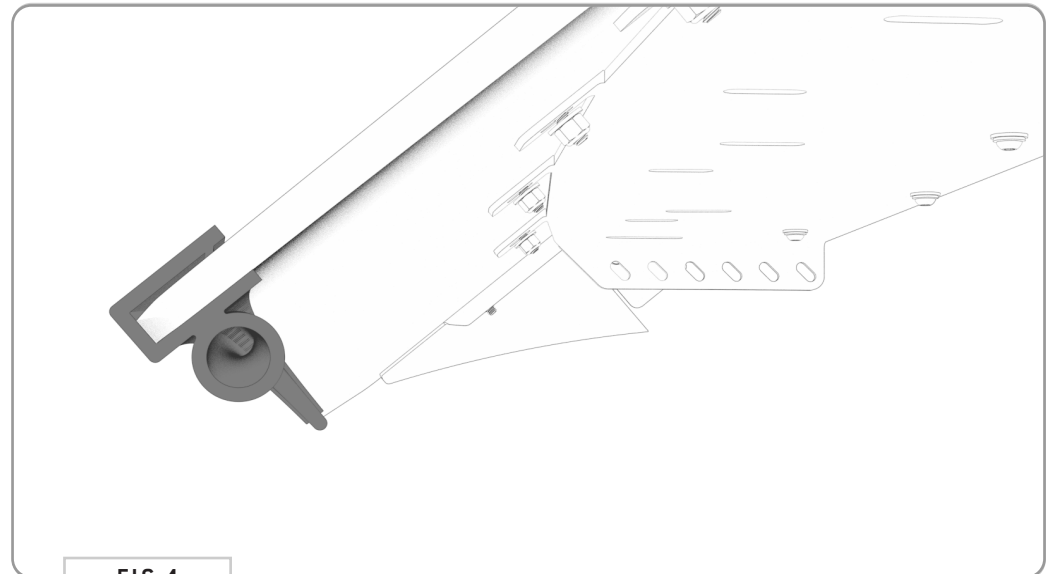


FIG 4

STEP | 01 FAIRING ASSEMBLY

1.5 Attach Front Fairing: Attach the Front Fairing to the Assembly using 1/4-20 x 0.75 Flanged Button Head Screws, Flat Washers and Nylon Locknuts (FIG 5+6).

TOOLS REQUIRED FOR THIS STEP: + 3/16" ALLEN WRENCH
+ 5/32" ALLEN WRENCH
+ 7/16" SOCKET OR WRENCH

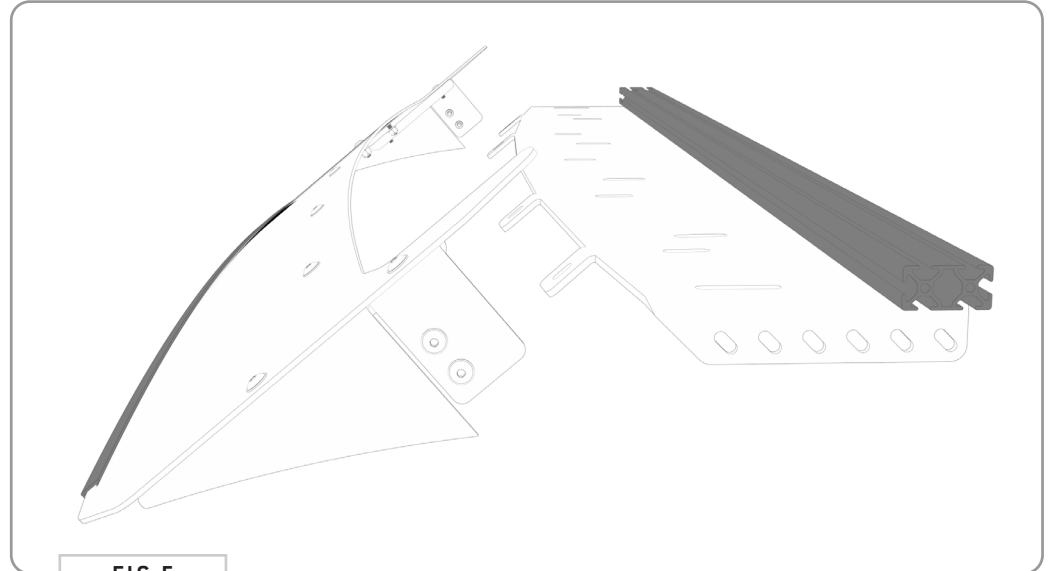


FIG 5

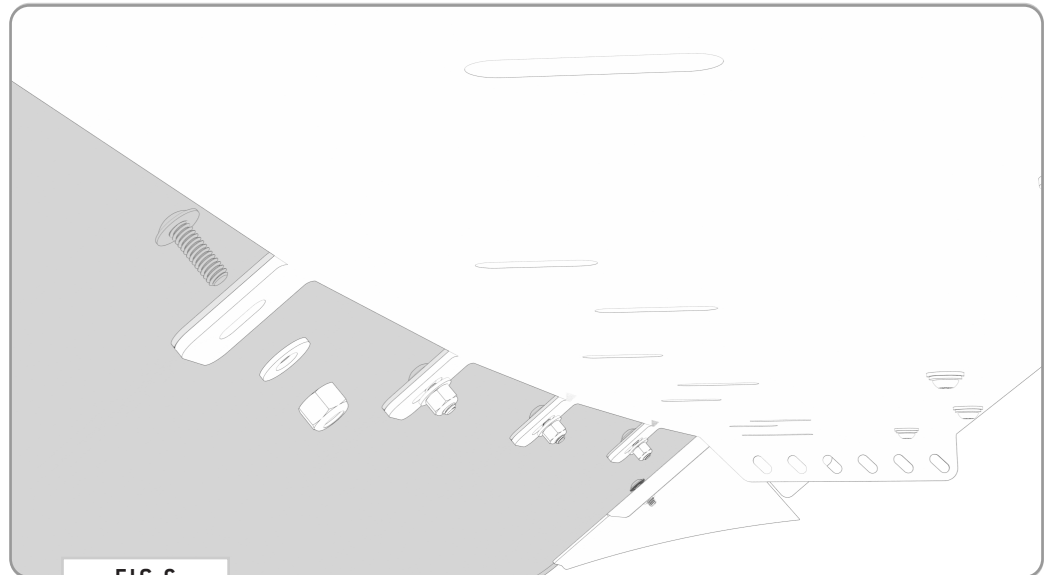


FIG 6

TOOLS REQUIRED FOR THIS STEP: + 3/16" ALLEN WRENCH

STEP | 02 FAIRING INSTALL

2.1 Fairing Install: Now you're ready to attach the fairing to the roof rack. Slide it in from the front and into the location shown in FIG 7. Tighten down using (8) 1/4-20" Flange Head Screws (FIG 8).

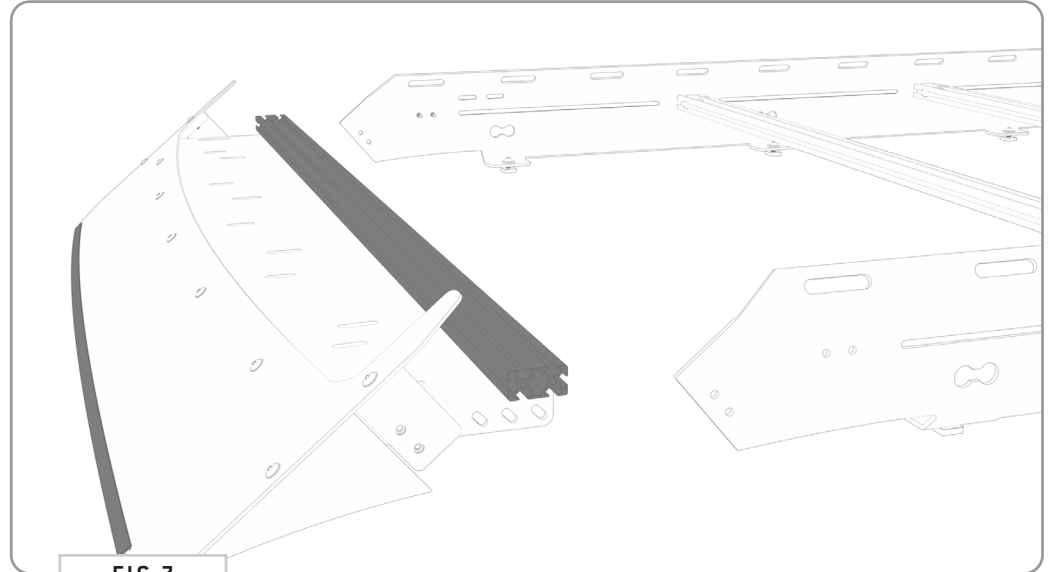


FIG 7

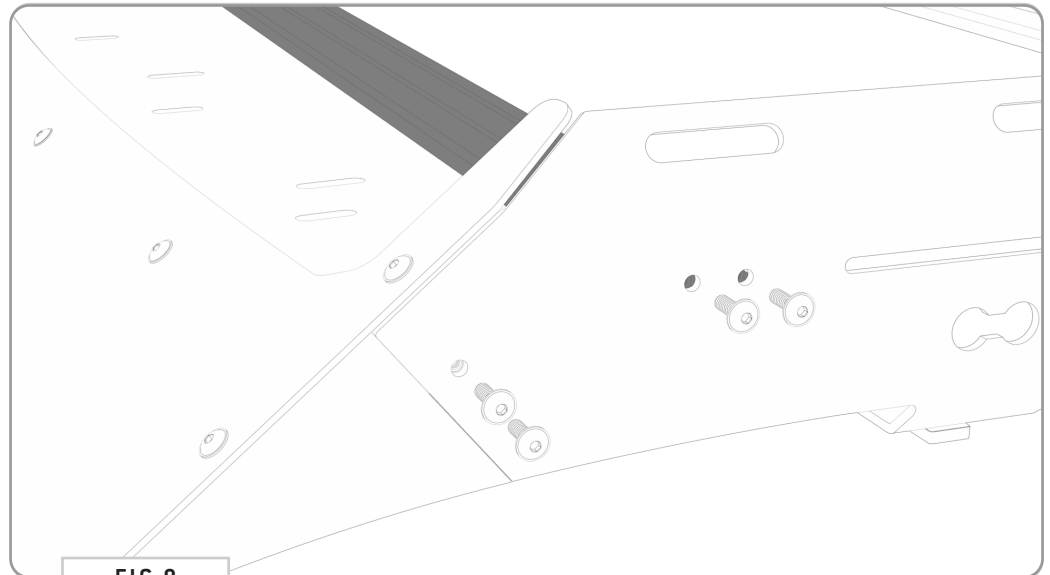


FIG 8

GET OUT AND EXPLORE!

+ LEAVE US A REVIEW

Happy with your new FVC product? We would love to hear (and see) from you! Head to the product page and click "Leave Review." Add a short review and upload a few photos to be showcased on the product page.

+ SHARE YOUR PICS

We love seeing how our customers use their FVC products and following along with your adventures. Tag us in your photos with: @flatlinevanco or send them to us via email. We love posting customer pictures in our feed!

+ NEED ANY HELP?

If you are having any issues with your product, please reach out, and we will make it right. FVC is a company of van and outdoor enthusiasts that design and use our own products, so we want you to be as stoked on your new parts as we are!



@FLATLINEVANCO